

1252
20-0
312
420

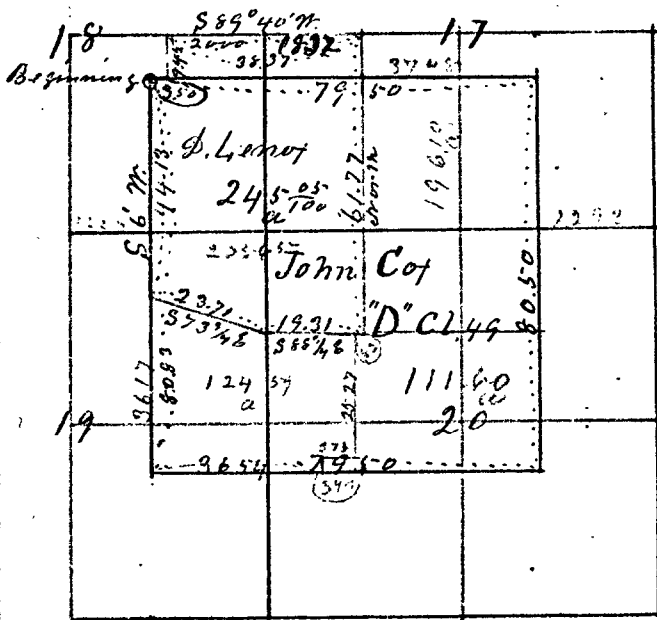
7750
7202
3748

Thence N 23 1/2 W
21.50 To North boundary of Sec 23. 75 links
West of Sec corner
Thence West
11.75 To a East boundary of W Tract Donation
Cl No 40.
Thence South
9.90 To place of beginning
Contains 287 ²⁴/₁₀₀ Acre

No 184

28-6

37.70
29.77
8.23
16
67



David Leno of Jan 4 - 1893

T. 28. S R. 6. W.

Var 18° 45' E.

Thence from established
corner of John Cot Donation
Land Cl No 49.

The same being the N.W.
corner of said Cl. No 49
and established by W. Thiel

June 1st 1885: Thence I run and measured along
S 06° W 44.13 chs set post in County Road marked
C.S. from which W Oak 8 in dia b. N 51 1/2 E. 340 lbs
Thence S 73 1/4 E. 23.71 chs. set post marked C.S. in Co
Road no tree near. Thence S 88 1/4 E. 19.31 chs to a
Rock corner set by W. H. Bgers in county Road.
Thence North 61.77 chs to corner established by
W. Thiel Co Sur to wit: B Oak 15 ins dia b. S 34° W.
44 lbs B Oak 42 in dia b N 34° E. 30 lbs.
Thence S 89° 40 W. 18.52 chs to quarter post between Secs
17 & 18. Thence S 89° 40' W. 20.00 chs to corner
Established by W. Thiel made new post marked
C.S. from which B Oak 40 ins dia b N 10° W. 102 lbs.
Thence South 9.45 chs to N boundary of Cot donation
Cl No 49. set post marked C.S. from which B Oak 30 in dia