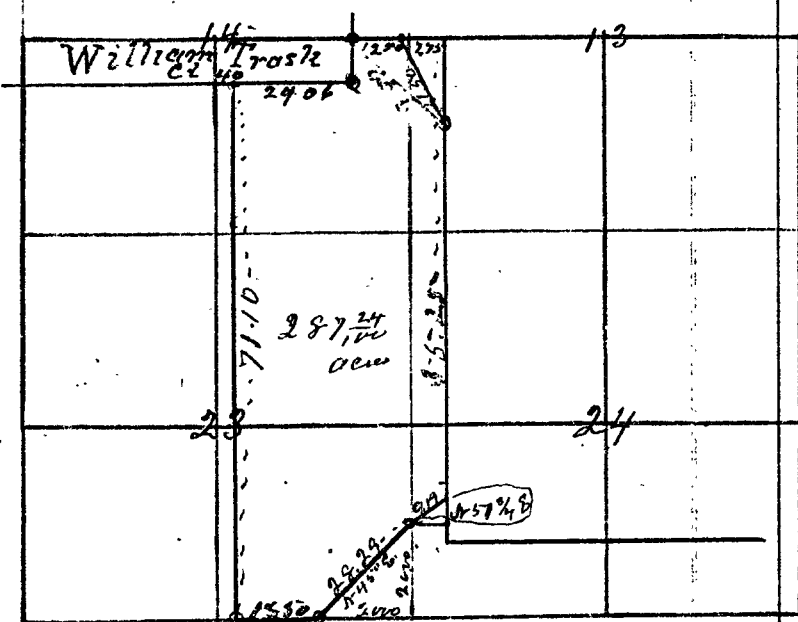


15-9-2

to 1893

36-4

J. C. & Living Atterb. Dec 27+28. 1892  
 Beginning at a S.E. Corner of William Trask  
 Donation claim No 40. in T26 S. R. 4 W.



T 26 S. R. 4 W

Var 19° E

ch

Thence West

24.06

Set post marked C.S. - from which  
 This 10 in dia. b S 40° E. 40 lbs marked C.S. B.T.

Thence South

71.10

To South boundary of Sec 23. Could not  
 find quarter post but Secs 23 & 26.  
 Set post marked C.S. from which  
 This 8 in dia. b S 40° E. 10 lbs marked C.S. B.T.

Thence East

16.56

To a S.W. cor of a 20 acre tract of land  
 sold by William Trask to Daniel Wilkerson

Thence on line of fence N 45° E.

28.29

To the East boundary of said Sec 23  
 and a S.W. cor of a 1.24 acre tract of  
 land sold by said Trask to said  
 Wilkerson.

Thence N 67° 45' E.

9.19

To a West boundary of R D Foster Donation  
 Cl No 43.

Thence North

35.25

To a S.E. cor of 8.33 a tract of land sold by  
 said Trask to