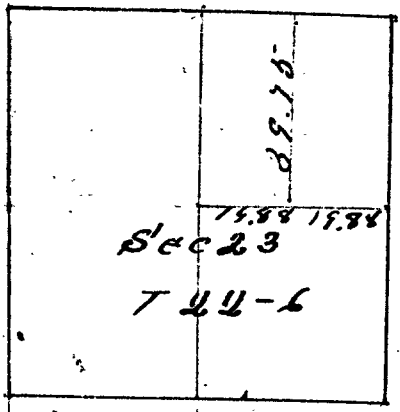


No 16 Subdivision of Section 23 T. 22 S. R. 6 W



Surveyed for
 C. S. Howard
 Mar 28th 29th 1887
 E Jackson and
 A J B Parkership
 sworn chainmen
 J & B Hill
 C. S. W.

Re-establish the 1/4 Sec. Cor. Bet Secs 14 + 23
 (T 22-6) in accordance with witness tree
 still standing. Make new witness and
 record same in Record of new witnesses to
 U.S. Commrs

From the 1/4 Sec. Cor. Bet Secs 14 + 23
 T. 22 S. R. 6 W. South on random 1/4 Sec.
 line 80.00 chains intersect line Bet
 Secs 11 + 14 3.80 chains East of 1/4 Sec. Cor.
 North 2-22 1/4 on true 1/4 line across
 Section 23. At 20 chains set temporary
 corner 80.00 chains intersect 1/4 Sec Cor
 Bet Secs. 14 + 23. Also set temporary 1/2
 mile stake on above line

From temporary stake set at 20 chains
 on above line East 40 chains to East
 boundary of section. Thence north to
 1/4 Sec. Cor. Re-establish 1/4 Sec Cor Bet
 Secs 23 + 24 by making new witness