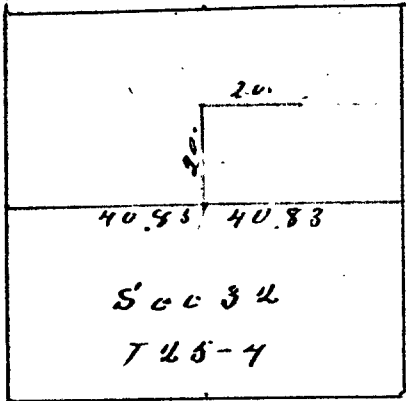


No 14 Subdivision of Section 32 T 25 S R. 4 W



Surveyed for
Thomas S. Tucker
Jan. 18-19th 1887

Deane Jarvis and
John M. Simms
owners
W. E. Britt
C. S. Sur.

From the $\frac{1}{4}$ Sec. Corner between sections
31 and 32 T 25 S R 4 W
East on random line across Sec 32
81.67 chains intersect line between
sections 32 and 33. 16 links south
of $\frac{1}{4}$ Section corner
S $89^{\circ} 53' 54''$ on true line across section 32
40.48 Set temporary $\frac{1}{4}$ Sec. Cor.
From above mentioned temporary $\frac{1}{4}$ Sec. Cor.
North 20 chains Thence East 20 chains

No. 15 By order of County Court of Douglas
County Survey a map of public
surrender filed notes of which are
filed with County Clerk
Surveyed Feb. 2nd 1887
W. E. Britt
C. S. Sur.