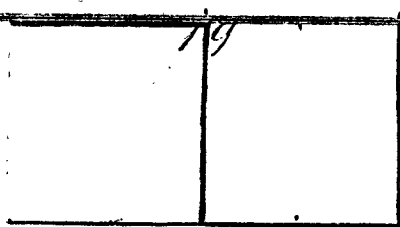


No 252

Plinn Cooper May 14. 1886.



T. 28 S.
R. 5 W.

Set 1/4 sect. post by B.T. thence Var. 19° 15'.
 N 89° 34' E. 40.17 chns. intersects NE corner of sect. 30.
 S 89° 34' W. 20 8 1/2 " set post, from which
 a wh. oak 20" in dia bears S 38° 11' E. 1.90 chns.

From same 1/4 post

N 7 1/2° W 40.00 chns. set post, from which
 a bl. oak 16" in dia. bears N 31° W 0.18 lks.
 " " " 16 " " " S 86 1/4° E 0.94 "

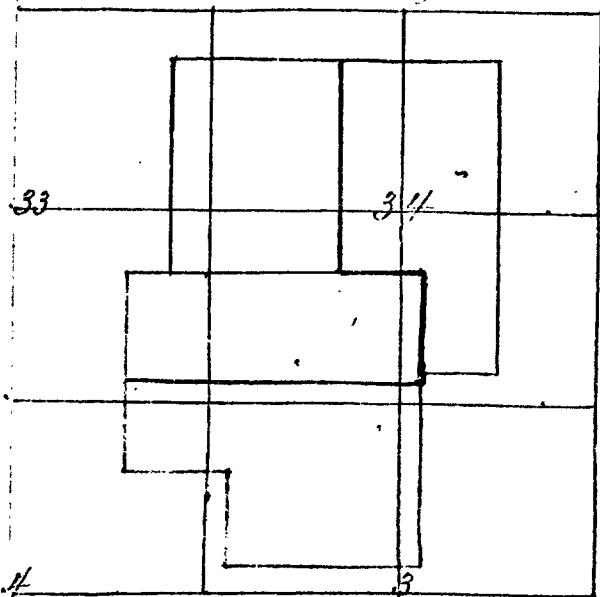
S 89 1/2° W 19.86 intersect post 4 of 234 N. 19 lks.

From 1/4 post betw. 24 and 17.

N 89 1/2° E. 20.44 intersect post 4 of 234 South. 4 lks.

No 253.

Estate of T. J. McGuire, May 17. 1886.



T. 28 S.

R. 7 W.

T. 29 S.

From the NE corner of E. Croston dom: Var. 19 1/2°
 South 22.00 chns set post, from which

a wh. oak 13" in dia bears S 45 1/2° E. 0.69 lks. Chs?

" " " 15 " " " N 45° E. 0.73 "

West 60.00 chns set post and large mound of stones.

From above corner

West 15.40 chns. set post, from which, a wh. oak 18" dia bears
 S 78° W 0.56 lks, bl. oak 36" N 30° W 0.79 lks dist.