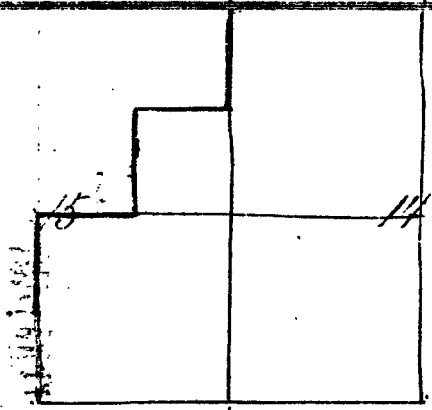


117° 24.9

E. N. Bradford April 20th 86.

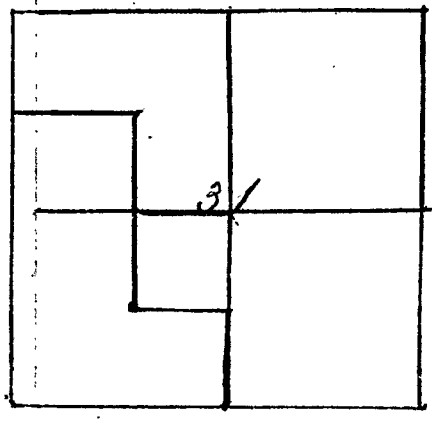


T. 23 S.
R. 4 W

From NE corner of sect. 15. Var 20 1/4°
 South 2000 chrs. set post, etc.
 N 87° 30' W. 2000. set post No. 2 from which
 a wh. oak 6" in dia. bears N 45 1/4° W 0.65 chrs.
 South 2000 chrs. set post No. 3. from which
 a fir 48" in dia. bears N 60° E 0.65 chrs. dist.
 N 87° 35' W. 2000 chrs., set post, from which
 an ash 12" in dia. bears S 32° E. 1.24 chrs. dist.

No. 250.

Wm Boggs. April 23^d 86



T. 27 S.
R. 5 W.

From 1/4 sect. post between sects 31. Var 20 1/2° E.
 North 2000 chrs. West 2000 chrs.
 North 4000 chrs. set post, from which
 a bl. oak 8" in dia. bears S 24 1/4° W 0.42 chrs.
 a wh. oak 10" " " S 51 3/4° E 0.59 "
 West 27.25 chrs. intersect down line, set post.
 from which is
 bl. oak 10" in dia. bears S 35 1/2° E 0.39 chrs. dist.
 wh. oak 8" " " S 31 1/2° W 0.26 " "