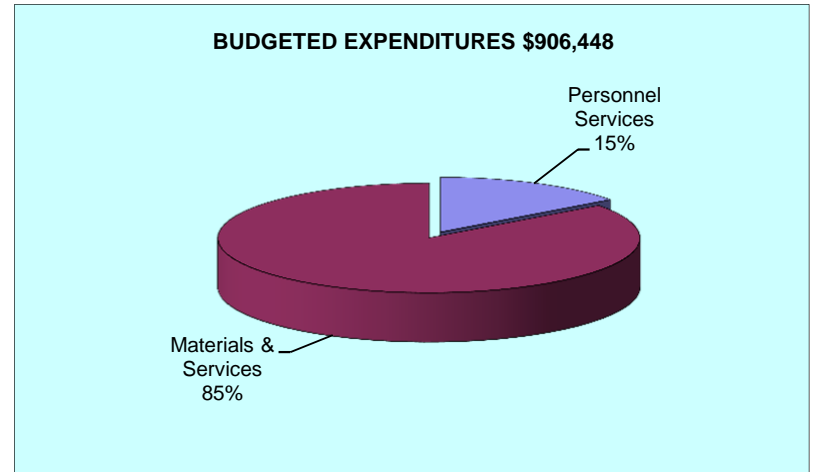
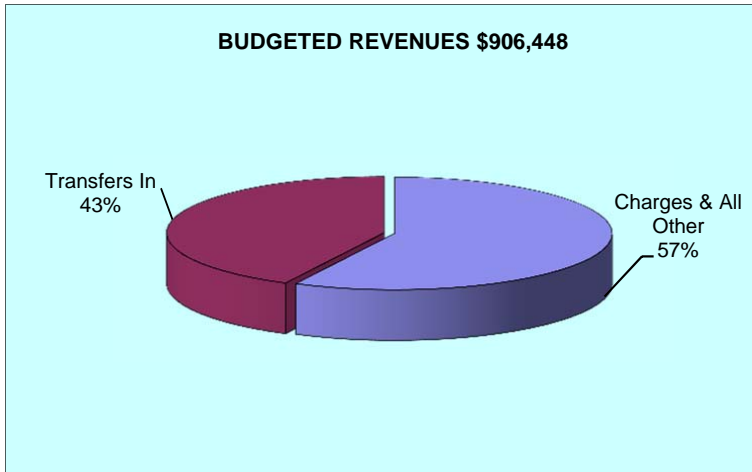
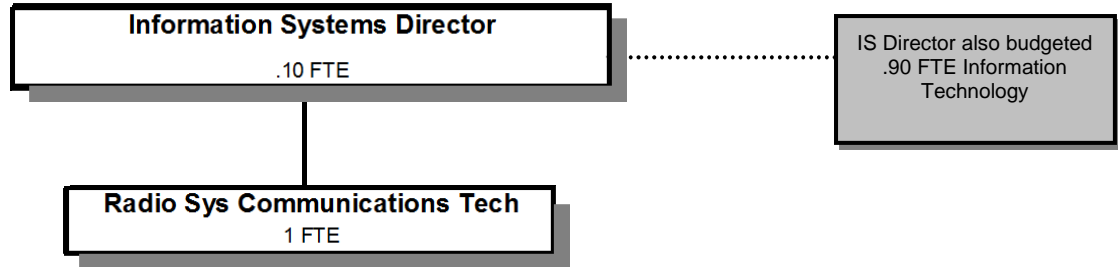


# Radio System



Douglas County, Oregon  
Public Safety Fund  
Radio System (1900)

	Actual FY 13-14	Actual FY 14-15	Actual FY 15-16	Revised Budget FY 16-17	Proposed FY 17-18	Approved FY 17-18	Adopted FY 17-18
<b><u>RESOURCES</u></b>							
Beginning Balance	25,133	63,523	116,126				
Revenues:							
Charges and Other Revenues	132,414	135,419	166,568	165,711	170,035	170,035	170,035
Intergovernmental Revenues				75,000	350,950	350,950	350,950
Transfers In - Public Works	327,940	396,804	365,000	385,463	385,463	385,463	385,463
Total Revenue	460,354	532,223	531,568	626,174	906,448	906,448	906,448
<b>TOTAL RESOURCES</b>	485,487	595,746	647,694	626,174	906,448	906,448	906,448
<b><u>REQUIREMENTS</u></b>							
Personnel Services	121,341	122,375	115,526	123,595	135,142	135,142	135,142
Materials & Services	300,624	324,727	357,465	502,579	771,306	771,306	771,306
Capital Outlay		32,518					
Total Expenditures	421,965	479,620	472,991	626,174	906,448	906,448	906,448
Ending Balance	63,523	116,126	174,703				
<b>TOTAL REQUIREMENTS</b>	485,488	595,746	647,694	626,174	906,448	906,448	906,448
<b>Staffing FTE</b>	<b>1.19</b>	<b>1.19</b>	<b>1.09</b>	<b>1.09</b>	<b>1.10</b>	<b>1.10</b>	<b>1.10</b>

Douglas County, Oregon  
Public Safety Fund  
Radio System

Department Detail

			Actual	Actual	Revised	Proposed	Approved	Adopted
			FY 14-15	FY 15-16	Budget	FY 17-18	FY 17-18	FY 17-18
					FY 16-17			
220-1900-3290-34	State/Fed-Other Assistance	OEM-Homeland Security Program	0	0	75,000	350,950	350,950	350,950
220-1900-3800-01	Interest	General Investments	283	371	0	0	0	0
220-1900-3820-50	Rents, Leases and Royalties	Radio Facility	135,136	166,176	165,711	170,035	170,035	170,035
220-1900-3879-00	Miscellaneous	General	0	21	0	0	0	0
220-1900-3900-11	Transfers In	Public Works	396,804	365,000	385,463	385,463	385,463	385,463
<b>Total Revenue</b>			<b>532,223</b>	<b>531,568</b>	<b>626,174</b>	<b>906,448</b>	<b>906,448</b>	<b>906,448</b>
220-1900-4000-00	Regular Employees	General	78,996	73,862	77,059	83,106	83,106	83,106
220-1900-4050-00	Overtime	General	521	0	2,000	2,000	2,000	2,000
220-1900-4500-00	PERS	General	18,851	18,336	19,804	23,981	23,981	23,981
220-1900-4510-00	Social Security	General	5,847	5,446	6,048	6,511	6,511	6,511
220-1900-4520-00	Workers' Compensation	General	278	258	593	638	638	638
220-1900-4520-01	Workers' Compensation	Workers Comp Claims	0	80	0	0	0	0
220-1900-4530-00	Medical and Dental Insurance	General	17,763	17,323	17,854	18,480	18,480	18,480
220-1900-4540-00	Unemployment	General	119	221	237	426	426	426
<b>Total Personnel Services</b>			<b>122,375</b>	<b>115,526</b>	<b>123,595</b>	<b>135,142</b>	<b>135,142</b>	<b>135,142</b>
220-1900-5099-00	Other Professional Services	General	15,837	15,902	90,000	370,950	370,950	370,950
220-1900-5199-10	Other Technical Services	Pacific Power Line Charge	30,906	37,476	33,000	32,000	32,000	32,000
220-1900-6065-00	Fuel and Oil	General	21,648	18,459	33,000	33,000	33,000	33,000
220-1900-6065-03	Fuel and Oil	Propane	100	100	500	500	500	500
220-1900-6295-00	Equipment-Noninventory	General	3,307	8,120	42,000	30,000	30,000	30,000
220-1900-6400-50	Land and Building Rent	Radio Facility Lease	147,465	224,622	186,260	191,419	191,419	191,419
220-1900-6500-00	Interdept Vehicle Expense	General	4,513	3,195	3,000	3,000	3,000	3,000
220-1900-6510-10	Equip/Vehicle Main & Repair	Comm System M&R	97,049	47,640	102,124	97,677	97,677	97,677
220-1900-6550-00	Building and Grounds Maint	General	0	0	7,935	8,000	8,000	8,000
220-1900-6680-10	Communication	Internet Service	1,011	1,562	1,560	1,560	1,560	1,560
220-1900-6680-13	Communication	Frequency Lease	1,940	0	2,000	2,000	2,000	2,000
220-1900-6720-01	Fire/Liability Insurance	Liability Ins Charges	150	120	600	600	600	600
220-1900-7410-00	Postage	General	515	215	500	500	500	500

Douglas County, Oregon  
 Public Safety Fund  
 Radio System

Department Detail

			Actual	Actual	Revised	Proposed	Approved	Adopted
			FY 14-15	FY 15-16	Budget	FY 17-18	FY 17-18	FY 17-18
					FY 16-17			
220-1900-7900-00	Miscellaneous	General	286	54	100	100	100	100
<b>Total Materials and Services</b>			<b>324,727</b>	<b>357,465</b>	<b>502,579</b>	<b>771,306</b>	<b>771,306</b>	<b>771,306</b>
220-1900-8300-00	Vehicles and Heavy Equipment	General	32,518	0	0	0	0	0
<b>Total Capital Outlay</b>			<b>32,518</b>	<b>0</b>	<b>0</b>	<b>0</b>	<b>0</b>	<b>0</b>
<b>Total Expenditures</b>			<b>479,620</b>	<b>472,991</b>	<b>626,174</b>	<b>906,448</b>	<b>906,448</b>	<b>906,448</b>

Douglas County, Oregon  
Public Safety Fund  
Radio System

PERSONNEL SERVICES					
	Actual	Actual	Revised	Budget	
	FTE	FTE	Budget	FY 17-18	
	FY 14-15	FY 15-16	FY 16-17	FTE	Amount
IS and Building Facilities Director	0.09	0.09	0.09		
IS Director				0.10	9,902
IS Project Manager	0.10				
Radio Sys Communications Tech	1.00	1.00	1.00	1.00	73,204
Total Regular	<u>1.19</u>	<u>1.09</u>	<u>1.09</u>	<u>1.10</u>	<u>83,106</u>
Overtime					2,000
PERS		26.55%, 38.18%			23,981
Social Security		7.65%			6,511
Worker's Compensation		0.75%			638
Unemployment		0.50%			426
Medical & Dental Insurance		\$1,400/mo			18,480
Total Personnel Services					<u><u>135,142</u></u>