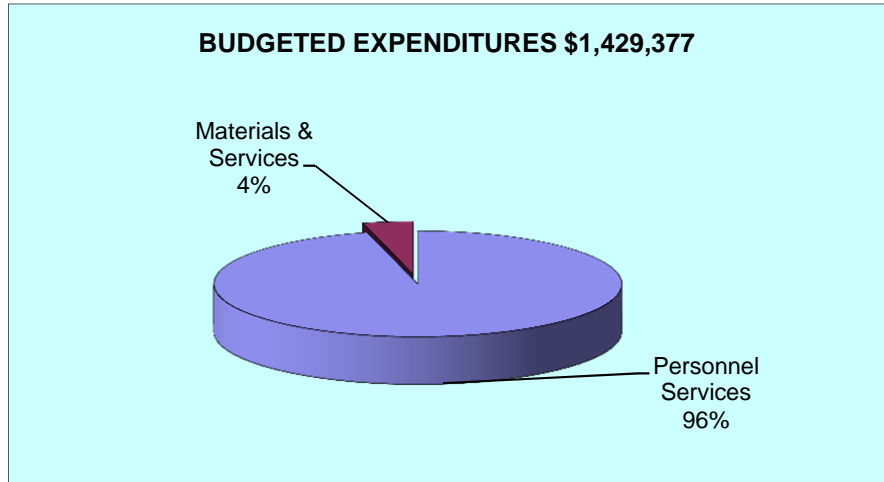
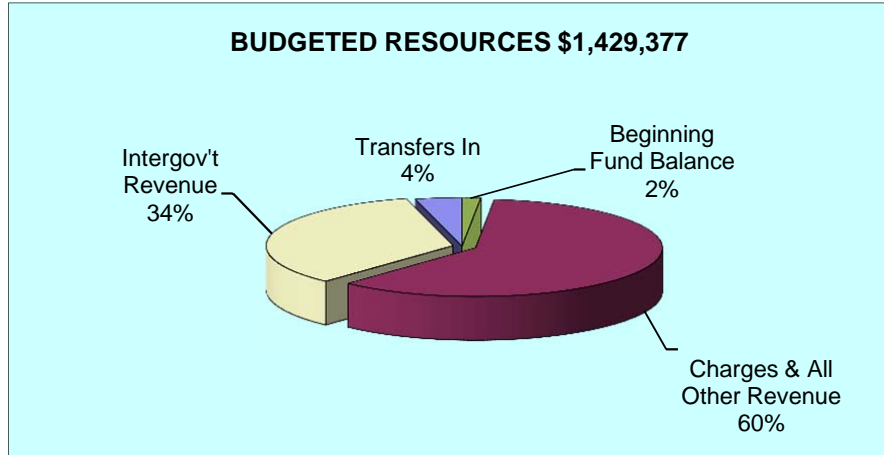
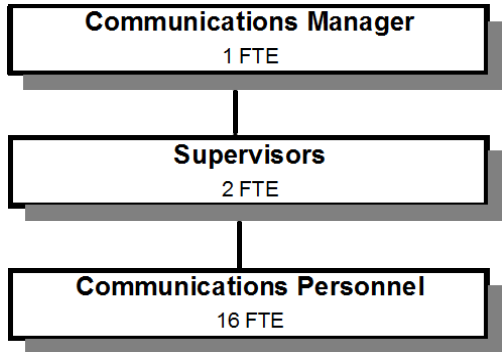


COMMUNICATIONS 911 & DISPATCH



Douglas County, Oregon
Public Safety Fund
Communications 911 and Dispatch (1800)

| | Actual FY 13-14 | Actual FY 14-15 | Actual FY 15-16 | Revised Budget FY 16-17 | Proposed FY 17-18 | Approved FY 17-18 | Adopted FY 17-18 |
|--------------------------------------|--------------------|--------------------|--------------------|-------------------------------|----------------------|----------------------|---------------------|
| <u>RESOURCES</u> | | | | | | | |
| Beginning Balance | 204,780 | 218,801 | 181,721 | | 23,000 | 23,000 | 23,000 |
| Revenues: | | | | | | | |
| Charges and Other Revenues | 730,670 | 772,446 | 813,334 | 829,036 | 861,963 | 861,963 | 861,963 |
| Intergovernmental Revenues | 510,183 | 504,898 | 543,088 | 486,875 | 486,875 | 486,875 | 486,875 |
| Transfers In - General Fund | | | | 72,460 | 57,539 | 57,539 | 57,539 |
| Total Revenue | 1,240,853 | 1,277,344 | 1,356,422 | 1,388,371 | 1,406,377 | 1,406,377 | 1,406,377 |
| TOTAL RESOURCES | 1,445,633 | 1,496,145 | 1,538,143 | 1,388,371 | 1,429,377 | 1,429,377 | 1,429,377 |
| <u>REQUIREMENTS</u> | | | | | | | |
| Personnel Services | 1,812,497 | 1,884,376 | 1,821,190 | 1,945,510 | 2,011,093 | 2,011,093 | 2,011,093 |
| Materials & Services | 19,901 | 36,176 | 38,502 | 76,120 | 83,206 | 83,206 | 83,206 |
| | 1,832,398 | 1,920,552 | 1,859,692 | 2,021,630 | 2,094,299 | 2,094,299 | 2,094,299 |
| Less: Reimbursement from Enforcement | (605,566) | (606,128) | (614,814) | (633,259) | (664,922) | (664,922) | (664,922) |
| Total Expenditures | 1,226,832 | 1,314,424 | 1,244,878 | 1,388,371 | 1,429,377 | 1,429,377 | 1,429,377 |
| Ending Balance | 218,801 | 181,721 | 293,265 | | | | |
| TOTAL REQUIREMENTS | 1,445,633 | 1,496,145 | 1,538,143 | 1,388,371 | 1,429,377 | 1,429,377 | 1,429,377 |
| Staffing FTE | 20.00 | 20.00 | 19.00 | 19.00 | 19.00 | 19.00 | 19.00 |

Douglas County, Oregon
Public Safety Fund
Communications 911 and Dispatch

Department Detail

| | | | Actual | Actual | Revised | Proposed | Approved | Adopted |
|---------------------------------|--------------------------------|------------------------------|------------------|------------------|------------------|------------------|------------------|------------------|
| | | | FY 14-15 | FY 15-16 | Budget | FY 17-18 | FY 17-18 | FY 17-18 |
| | | | | | FY 16-17 | | | |
| 220-1800-2380-00 | Communications Contracts | General | 769,751 | 808,077 | 818,536 | 859,463 | 859,463 | 859,463 |
| 220-1800-3450-06 | Shared Revenues | 911 Revenues | 504,898 | 543,088 | 486,875 | 486,875 | 486,875 | 486,875 |
| 220-1800-3800-01 | Interest | General Investments | (5) | 146 | 0 | 0 | 0 | 0 |
| 220-1800-3875-00 | Expense Reimbursements | General | 0 | 0 | 8,000 | 0 | 0 | 0 |
| 220-1800-3879-00 | Miscellaneous | General | 2,700 | 5,124 | 2,500 | 2,500 | 2,500 | 2,500 |
| 220-1800-3879-95 | Miscellaneous | NSF Checks | 0 | (13) | 0 | 0 | 0 | 0 |
| 220-1800-3900-01 | Transfers In | General Fund | 0 | 0 | 72,460 | 57,539 | 57,539 | 57,539 |
| Total Revenue | | | 1,277,344 | 1,356,422 | 1,388,371 | 1,406,377 | 1,406,377 | 1,406,377 |
| 220-1800-4000-00 | Regular Employees | General | 1,042,625 | 974,092 | 1,036,300 | 1,050,310 | 1,050,310 | 1,050,310 |
| 220-1800-4030-00 | Temporary Employees | General | 0 | 2,755 | 0 | 0 | 0 | 0 |
| 220-1800-4050-00 | Overtime | General | 109,028 | 142,096 | 95,000 | 95,000 | 95,000 | 95,000 |
| 220-1800-4500-00 | PERS | General | 300,544 | 301,042 | 321,407 | 365,642 | 365,642 | 365,642 |
| 220-1800-4510-00 | Social Security | General | 84,907 | 84,518 | 86,544 | 87,616 | 87,616 | 87,616 |
| 220-1800-4520-00 | Workers' Compensation | General | 4,031 | 3,916 | 8,485 | 8,590 | 8,590 | 8,590 |
| 220-1800-4530-00 | Medical and Dental Insurance | General | 341,514 | 309,432 | 394,380 | 398,208 | 398,208 | 398,208 |
| 220-1800-4540-00 | Unemployment | General | 1,727 | 3,339 | 3,394 | 5,727 | 5,727 | 5,727 |
| Total Personnel Services | | | 1,884,376 | 1,821,190 | 1,945,510 | 2,011,093 | 2,011,093 | 2,011,093 |
| 220-1800-5000-00 | Legal Services | General | 0 | 0 | 1,500 | 1,500 | 1,500 | 1,500 |
| 220-1800-6290-00 | Software Purchases | General | 134 | 124 | 1,500 | 24,100 | 24,100 | 24,100 |
| 220-1800-6290-10 | Software Purchases | Software Updates/Maintenance | 0 | 0 | 170 | 456 | 456 | 456 |
| 220-1800-6295-00 | Equipment-Noninventory | General | 2,861 | 6,711 | 7,500 | 7,500 | 7,500 | 7,500 |
| 220-1800-6295-02 | Equipment-Noninventory | Computer Replacement | 0 | 0 | 0 | 700 | 700 | 700 |
| 220-1800-6460-00 | Software Rental | General | 20,221 | 18,434 | 30,000 | 22,000 | 22,000 | 22,000 |
| 220-1800-6500-00 | Interdept Vehicle Expense | General | 593 | 491 | 2,000 | 2,000 | 2,000 | 2,000 |
| 220-1800-6510-02 | Equip/Vehicle Main & Repair | Equip Service Contracts | 0 | 54 | 5,000 | 5,000 | 5,000 | 5,000 |
| 220-1800-6680-01 | Communication | Telephone | 1,568 | 2,131 | 2,000 | 2,000 | 2,000 | 2,000 |
| 220-1800-6720-01 | Fire/Liability Insurance | Liability Ins Charges | 6,000 | 5,500 | 17,000 | 8,500 | 8,500 | 8,500 |
| 220-1800-6800-00 | Laundry and Dry Cleaning | General | 0 | 151 | 0 | 0 | 0 | 0 |
| 220-1800-7400-00 | Office Supplies and Expenses | General | 1,603 | 2,176 | 2,500 | 2,500 | 2,500 | 2,500 |
| 220-1800-7410-00 | Postage | General | 180 | 210 | 300 | 300 | 300 | 300 |
| 220-1800-7550-00 | Travel | General | 117 | 0 | 1,000 | 1,000 | 1,000 | 1,000 |
| 220-1800-7560-00 | Conventions, Schools, Seminars | General | 1,128 | 1,207 | 3,000 | 3,000 | 3,000 | 3,000 |

Douglas County, Oregon
 Public Safety Fund
 Communications 911 and Dispatch

Department Detail

| | | | Actual | Actual | Revised | Proposed | Approved | Adopted |
|--|------------------------|---------------------|------------------|------------------|------------------|------------------|------------------|------------------|
| | | | FY 14-15 | FY 15-16 | Budget | FY 17-18 | FY 17-18 | FY 17-18 |
| | | | | | FY 16-17 | | | |
| 220-1800-7580-00 | Dues and Memberships | General | 0 | 0 | 150 | 150 | 150 | 150 |
| 220-1800-7850-00 | Pre-employment Testing | General | 1,771 | 1,313 | 2,500 | 2,500 | 2,500 | 2,500 |
| Total Materials and Services | | | 36,176 | 38,502 | 76,120 | 83,206 | 83,206 | 83,206 |
| Total Expenditures before Intrafund Transfers | | | 1,920,552 | 1,859,692 | 2,021,630 | 2,094,299 | 2,094,299 | 2,094,299 |
| 220-1800-9899-80 | Intrafund Transfers | Sheriff Enforcement | (606,128) | (614,814) | (633,259) | (664,922) | (664,922) | (664,922) |
| Total Expenditures | | | 1,314,424 | 1,244,878 | 1,388,371 | 1,429,377 | 1,429,377 | 1,429,377 |

Douglas County, Oregon
Public Safety Fund
Communications 911 and Dispatch

| PERSONNEL SERVICES | | | | | |
|--------------------------------|-----------------|-----------------|-----------------|--------------|-------------------------|
| | Actual | Actual | Revised | Budget | |
| | FTE | FTE | Budget | FY 17-18 | |
| | <u>FY 14-15</u> | <u>FY 15-16</u> | <u>FY 16-17</u> | <u>FTE</u> | <u>Amount</u> |
| Communication Supervisor-Basic | 3.00 | 3.00 | 3.00 | 2.00 | 136,420 |
| Communications Officer-Basic | 16.00 | 15.00 | 15.00 | 16.00 | 831,815 |
| Sergeant | 1.00 | 1.00 | 1.00 | 1.00 | 82,075 |
| Total Regular | <u>20.00</u> | <u>19.00</u> | <u>19.00</u> | <u>19.00</u> | <u>1,050,310</u> |
| Overtime | | | | | 95,000 |
| PERS | | 26.55%, 38.18% | | | 365,642 |
| Social Security | | 7.65% | | | 87,616 |
| Worker's Compensation | | 0.75% | | | 8,590 |
| Unemployment | | 0.50% | | | 5,727 |
| Medical & Dental Insurance | | Varied | | | 398,208 |
| Total Personnel Services | | | | | <u><u>2,011,093</u></u> |