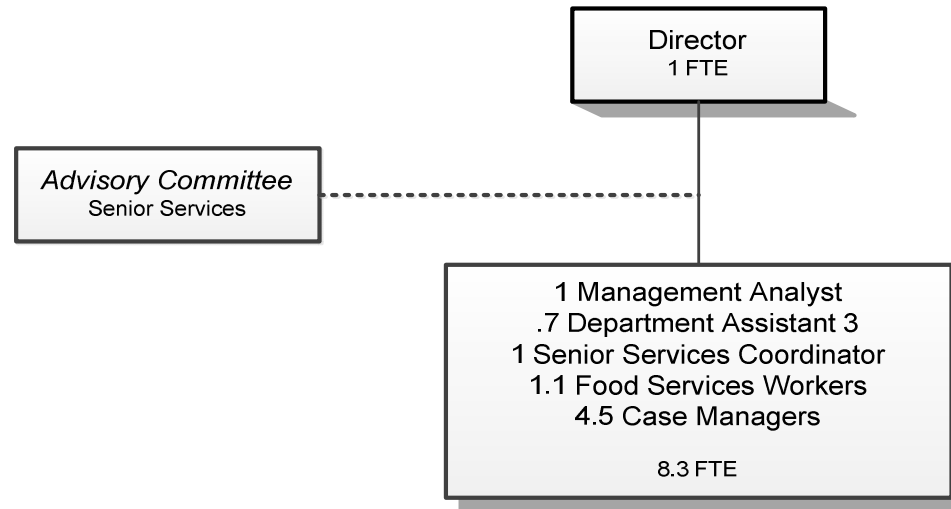


SENIOR SERVICES



Douglas County, Oregon
Health and Social Services Fund
Senior Services Division (4050)

	Actual FY 13-14	Actual FY 14-15	Actual FY 15-16	Revised Budget FY 16-17	Proposed FY 17-18	Approved FY 17-18	Adopted FY 17-18
<u>RESOURCES</u>							
Intergovernmental Revenues	915,367	1,256,059	1,270,281	1,437,387	1,424,640	1,424,640	1,424,640
Charges and Other Revenues	82,814	68,244	64,862	74,253	87,000	87,000	87,000
Total	<u>998,181</u>	<u>1,324,303</u>	<u>1,335,143</u>	<u>1,511,640</u>	<u>1,511,640</u>	<u>1,511,640</u>	<u>1,511,640</u>
<u>REQUIREMENTS</u>							
Personnel Services	436,177	556,575	568,625	659,936	666,057	666,057	666,057
Materials & Services	646,351	904,617	865,211	945,395	937,134	937,134	937,134
Capital Outlay		2,192					
Transfers Out - General Fund	50,739	47,274	47,274	47,275	48,115	48,115	48,115
Add: Expense Reimbursements to Other Divisions	64,309	21,870					
Total	<u>1,197,576</u>	<u>1,532,528</u>	<u>1,481,110</u>	<u>1,652,606</u>	<u>1,651,306</u>	<u>1,651,306</u>	<u>1,651,306</u>
<i>Use of General County Resources</i>	199,395	208,225	145,967	140,966	139,666	139,666	139,666
Staffing FTE	9.70	9.30	10.30	10.00	9.30	9.30	9.30

Douglas County, Oregon
Health and Social Services Fund
Senior Services

Department Detail

			Actual	Actual	Revised	Proposed	Approved	Adopted
			FY 14-15	FY 15-16	Budget	FY 17-18	FY 17-18	FY 17-18
207-4050-2680-01	Senior Services Program Rev	Congregate Meals	51,189	47,088	54,665	55,000	55,000	55,000
207-4050-2680-02	Senior Services Program Rev	Home Delivered Meals	10,675	10,091	11,662	27,000	27,000	27,000
207-4050-2680-10	Senior Services Program Rev	Home Care	3,420	7,283	7,926	5,000	5,000	5,000
207-4050-3210-00	State/Fed-Sr/Disabled Div	General	122,799	60,573	28,440	63,702	63,702	63,702
207-4050-3210-01	State/Fed-Sr/Disabled Div	SSD Title 19 Reimbursement	68,059	84,119	136,978	92,309	92,309	92,309
207-4050-3210-03	State/Fed-Sr/Disabled Div	OAA IIIB Social Services	109,548	176,951	164,952	175,917	175,917	175,917
207-4050-3210-04	State/Fed-Sr/Disabled Div	OAA IIIC1 Congregate Meals	221,696	216,046	212,165	193,572	193,572	193,572
207-4050-3210-05	State/Fed-Sr/Disabled Div	OAA IIIC2 Home Delivered Meals	126,913	111,091	108,055	87,492	87,492	87,492
207-4050-3210-06	State/Fed-Sr/Disabled Div	USDA Cash-in-Lieu	64,332	75,798	75,191	73,922	73,922	73,922
207-4050-3210-07	State/Fed-Sr/Disabled Div	OAA IIID In-Home Service	0	0	11,774	12,756	12,756	12,756
207-4050-3210-15	State/Fed-Sr/Disabled Div	OAA IIIE Family Caregiver	60,981	57,157	73,382	77,651	77,651	77,651
207-4050-3210-16	State/Fed-Sr/Disabled Div	OAA IIIE FCG Meals	0	0	0	66,900	66,900	66,900
207-4050-3210-20	State/Fed-Sr/Disabled Div	VII B Elder Abuse Prevention	4,329	2,044	2,229	2,007	2,007	2,007
207-4050-3220-10	State/Fed-Adult/Family Ser Div	Title 19-Home Delivered Meals	19,462	28,963	21,370	28,802	28,802	28,802
207-4050-3310-00	State-Sr/Disabled Div	General	0	0	66,901	36,718	36,718	36,718
207-4050-3310-01	State-Sr/Disabled Div	Oregon Project Independence	124,039	123,753	141,000	134,148	134,148	134,148
207-4050-3310-02	State-Sr/Disabled Div	OPI Home Care Worker	223,476	282,740	270,000	250,000	250,000	250,000
207-4050-3310-03	State-Sr/Disabled Div	OPI-Meals	0	0	0	21,902	21,902	21,902
207-4050-3310-04	State-Sr/Disabled Div	ADRC Gatekeeper	36,923	(7,161)	0	0	0	0
207-4050-3310-05	State-Sr/Disabled Div	ADRC Options Counseling	28,639	13,513	26,687	30,797	30,797	30,797
207-4050-3310-06	State-Sr/Disabled Div	ADRC Mental Health	30,384	14,321	50,000	44,398	44,398	44,398
207-4050-3310-07	State-Sr/Disabled Div	ADRC Alzheimer's	2,874	13,466	30,557	0	0	0
207-4050-3310-08	State-Sr/Disabled Div	ADRC Veterans	1,105	6,407	17,706	31,647	31,647	31,647
207-4050-3395-00	Local Assistance	General	10,500	10,500	0	0	0	0
207-4050-3840-xx	Contributions and Donations	Various	20	435	0	0	0	0
207-4050-3875-00	Expense Reimbursements	General	285	0	0	0	0	0
207-4050-3879-00	Miscellaneous	General	2,655	0	0	0	0	0
207-4050-3879-95	Miscellaneous	NSF Checks	0	(35)	0	0	0	0
Total Revenue			1,324,303	1,335,143	1,511,640	1,511,640	1,511,640	1,511,640
207-4050-4000-00	Regular Employees	General	306,348	323,310	373,212	356,402	356,402	356,402
207-4050-4030-00	Temporary Employees	General	19,895	22,223	25,048	26,000	26,000	26,000

Douglas County, Oregon
Health and Social Services Fund
Senior Services

Department Detail

			Actual	Actual	Revised	Proposed	Approved	Adopted
			FY 14-15	FY 15-16	Budget	FY 17-18	FY 17-18	FY 17-18
207-4050-4500-00	PERS	General	78,209	80,656	93,598	111,397	111,397	111,397
207-4050-4510-00	Social Security	General	23,892	25,666	30,467	29,254	29,254	29,254
207-4050-4520-00	Workers' Compensation	General	2,277	2,419	2,987	2,869	2,869	2,869
207-4050-4530-00	Medical and Dental Insurance	General	123,665	111,248	131,040	134,400	134,400	134,400
207-4050-4540-00	Unemployment	General	2,289	3,103	3,584	5,735	5,735	5,735
Total Personnel Services			556,575	568,625	659,936	666,057	666,057	666,057
207-4050-5099-00	Other Professional Services	General	5,643	3,032	17,518	12,252	12,252	12,252
207-4050-5300-00	Health & Social Svcs Contracts	General	29,577	15,856	96,960	53,617	53,617	53,617
207-4050-5335-05	Senior Service Contracts	Food Services Contracts	224,391	218,839	249,189	242,332	242,332	242,332
207-4050-5335-07	Senior Service Contracts	Other Agency Food Service	15,449	17,873	18,046	16,000	16,000	16,000
207-4050-5335-10	Senior Service Contracts	Home Delivered Food Services	170,544	187,021	162,633	224,190	224,190	224,190
207-4050-5335-25	Senior Service Contracts	Legal Services	17,325	7,178	8,051	8,562	8,562	8,562
207-4050-5335-40	Senior Service Contracts	Options Counseling	18,900	5,100	0	4,067	4,067	4,067
207-4050-5370-10	Other Health/Welfare Contracts	Home Care Workers	223,476	282,740	270,000	250,000	250,000	250,000
207-4050-5790-55	Transport Costs	Volunteer Reimbursements	17,899	17,668	19,700	20,000	20,000	20,000
207-4050-6290-00	Software Purchases	General	0	0	0	2,650	2,650	2,650
207-4050-6295-00	Equipment-Noninventory	General	4,025	308	150	1,708	1,708	1,708
207-4050-6299-00	Other Materials and Supplies	General	9,900	1,477	3,500	2,901	2,901	2,901
207-4050-6400-00	Land and Building Rent	General	43,200	44,912	46,722	46,116	46,116	46,116
207-4050-6450-02	Equipment/Vehicle Rent	Copy Machines	1,473	343	450	359	359	359
207-4050-6500-00	Interdept Vehicle Expense	General	7,257	7,174	4,650	7,396	7,396	7,396
207-4050-6510-00	Equip/Vehicle Main & Repair	General	1,841	502	755	105	105	105
207-4050-6510-02	Equip/Vehicle Main & Repair	Equipment Service Contracts	376	772	495	466	466	466
207-4050-6550-00	Building and Grounds Main	General	66,944	0	0	0	0	0
207-4050-6680-01	Communication	Telephone	13,463	11,864	13,220	11,587	11,587	11,587
207-4050-6720-01	Fire/Liability Insurance	Liability Ins Interdept Charges	2,426	2,123	5,964	6,090	6,090	6,090
207-4050-6800-00	Laundry and Dry Cleaning	General	4,594	4,830	5,708	4,940	4,940	4,940
207-4050-6850-00	License and Permit Fees	General	2,140	2,400	2,400	2,850	2,850	2,850
207-4050-6920-00	Awards and Recognitions	General	0	101	0	0	0	0
207-4050-7300-00	Advertising/Publicity	General	2,535	3,345	1,725	2,038	2,038	2,038
207-4050-7400-00	Office Supplies and Expenses	General	2,570	2,583	3,586	2,596	2,596	2,596
207-4050-7410-00	Postage	General	2,046	1,826	1,396	1,279	1,279	1,279

Douglas County, Oregon
 Health and Social Services Fund
 Senior Services

Department Detail

			Actual	Actual	Revised	Proposed	Approved	Adopted
			FY 14-15	FY 15-16	Budget	FY 17-18	FY 17-18	FY 17-18
207-4050-7420-01	Duplicating Services	Photos, Photostats, Copying	0	194	200	0	0	0
207-4050-7500-00	Subscriptions & Periodicals	General	249	630	550	708	708	708
207-4050-7550-80	Travel	Mileage Reimbursement	3,679	2,872	1,163	3,335	3,335	3,335
207-4050-7560-00	Conventions, Schools, Seminars	General	7,469	16,224	3,489	2,685	2,685	2,685
207-4050-7560-05	Conventions, Schools, Seminars	Volunteers	0	71	100	100	100	100
207-4050-7580-00	Dues and Memberships	General	4,642	4,972	6,400	5,130	5,130	5,130
207-4050-7800-00	Legal Publication and Printing	General	8	74	75	75	75	75
207-4050-7820-00	Advisory Committee Expense	General	182	132	500	500	500	500
207-4050-7850-00	Pre-employment Training	General	394	175	100	500	500	500
Total Materials & Services			904,617	865,211	945,395	937,134	937,134	937,134
207-4050-8200-99	Furniture and Equipment	Noninventory	2,192	0	0	0	0	0
Total Capital Outlay			2,192	0	0	0	0	0
207-4050-9500-01	Transfers Out	General Fund	47,274	47,274	47,275	48,115	48,115	48,115
207-4050-9899-22	Intrafund Transfers	Accounting	7,339	0	0	0	0	0
207-4050-9899-24	Intrafund Transfers	Offices	4,743	0	0	0	0	0
207-4050-9899-41	Intrafund Transfers	Information Technology	4,255	0	0	0	0	0
207-4050-9899-50	Intrafund Transfers	Department Administration	5,533	0	0	0	0	0
Total Other Requirements			69,144	47,274	47,275	48,115	48,115	48,115
Total Expenditures			1,532,528	1,481,110	1,652,606	1,651,306	1,651,306	1,651,306

Douglas County, Oregon
 Health and Social Services Fund
 Senior Services Division

PERSONNEL SERVICES					
	Actual	Actual	Revised	Budget	
	FTE	FTE	FTE	FY 17-18	
	FY 14-15	FY 15-16	FY 16-17	FTE	Amount
Senior Services Director			1.00	1.00	58,284
Senior Services Agency on Aging Manager	1.00	1.00			
Senior Services Case Manager	5.20	5.70	5.20	4.50	171,192
Senior Services Coordinator	1.00	1.00	1.00	1.00	28,787
Food Service Worker	1.10	1.10	1.10	1.10	24,738
Management Analyst 2	1.00	1.00	1.00	1.00	57,138
Department Assistant 2		0.50	0.70	0.70	16,263
Total Regular	<u>9.30</u>	<u>10.30</u>	<u>10.00</u>	<u>9.30</u>	<u>356,402</u>
Temporary					26,000
PERS		26.55%, 38.18%			111,397
Social Security		7.65%			29,254
Worker's Compensation		0.75%			2,869
Unemployment		1.50%			5,735
Medical & Dental Insurance		\$1,400/mo			<u>134,400</u>
Total Personnel Services					<u><u>666,057</u></u>