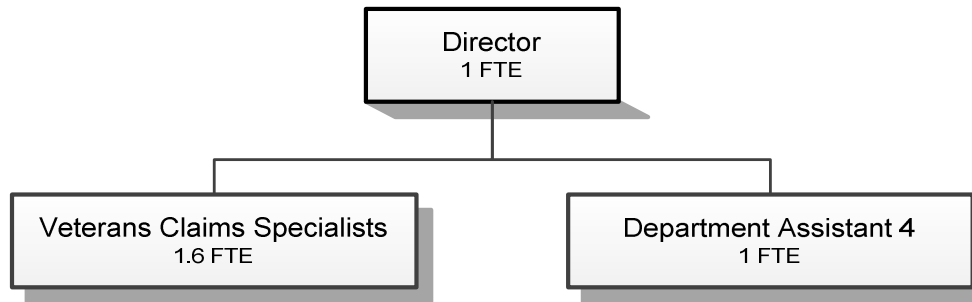


# **VETERANS SERVICES**



Douglas County, Oregon  
 Health and Social Services Fund  
 Veterans Services (4040)

	Actual FY 13-14	Actual FY 14-15	Actual FY 15-16	Revised Budget FY 16-17	Proposed FY 17-18	Approved FY 17-18	Adopted FY 17-18
<b><u>RESOURCES</u></b>							
Beginning Balance (Use Restricted)		54,526					
Intergovernmental Revenues	126,375	66,727	89,690	89,690	88,522	88,522	88,522
Charges and Other Revenues		25	338				
Total Revenue	126,375	66,752	90,028	89,690	88,522	88,522	88,522
<b>TOTAL RESOURCES</b>	126,375	121,278	90,028	89,690	88,522	88,522	88,522
<b><u>REQUIREMENTS</u></b>							
Personnel Services	182,171	211,860	186,212	243,196	254,948	254,948	254,948
Materials & Services	16,461	31,500	20,048	24,051	13,131	13,131	13,131
Capital Outlay	3,098	5,914	2,876				
Transfers Out - General Fund	15,612	16,529	16,529	16,529	16,529	16,529	16,529
Add: Expense Reimbursements to Other Divisions	(15,238)	11,704					
Total Expenditures	202,104	277,507	225,665	283,776	284,608	284,608	284,608
Ending Balance (Use Restricted)	54,526						
<b>TOTAL REQUIREMENTS</b>	256,630	277,507	225,665	283,776	284,608	284,608	284,608
<b>Use of General County Resources</b>	130,255	156,229	135,637	194,086	196,086	196,086	196,086
<b>Staffing FTE</b>	<b>3.00</b>	<b>3.00</b>	<b>3.15</b>	<b>3.60</b>	<b>3.60</b>	<b>3.60</b>	<b>3.60</b>

Douglas County, Oregon  
 Health and Social Services Fund  
 Veterans Services

Department Detail

			Actual	Actual	Revised	Proposed	Approved	Adopted
			FY 14-15	FY 15-16	Budget	FY 17-18	FY 17-18	FY 17-18
207-4040-3390-04	State-Other Assistance	Aid for Veteran Affairs	66,727	89,690	89,690	88,522	88,522	88,522
207-4040-3800-01	Interest	General Investments	25	0	0	0	0	0
207-4040-3879-00	Miscellaneous	General	0	338	0	0	0	0
<b>Total Revenue</b>			<b>66,752</b>	<b>90,028</b>	<b>89,690</b>	<b>88,522</b>	<b>88,522</b>	<b>88,522</b>
207-4040-4000-00	Regular Employees	General	108,077	122,049	140,428	143,907	143,907	143,907
207-4040-4030-00	Temporary Employees	General	25,675	3,948	3,500	6,000	6,000	6,000
207-4040-4050-00	Overtime	General	488	0	0	0	0	0
207-4040-4500-00	PERS	General	20,923	22,133	32,648	39,800	39,800	39,800
207-4040-4510-00	Social Security	General	9,897	9,564	11,010	11,468	11,468	11,468
207-4040-4520-00	Workers' Compensation	General	939	445	1,080	1,124	1,124	1,124
207-4040-4520-01	Workers' Compensation	Workers Comp Claims	2,000	0	0	0	0	0
207-4040-4530-00	Medical and Dental Insurance	General	42,922	27,690	53,235	50,400	50,400	50,400
207-4040-4540-00	Unemployment	General	939	383	1,295	2,249	2,249	2,249
<b>Total Personnel Services</b>			<b>211,860</b>	<b>186,212</b>	<b>243,196</b>	<b>254,948</b>	<b>254,948</b>	<b>254,948</b>
207-4040-6290-00	Software Purchases	General	0	0	60	632	632	632
207-4040-6290-10	Software Purchases	Software Updates/Maintenance	3,137	2,941	3,550	1,596	1,596	1,596
207-4040-6295-00	Equipment-Noninventory	General	228	4,771	725	725	725	725
207-4040-6299-00	Other Materials and Supplies	General	629	100	0	500	500	500
207-4040-6450-02	Equipment/Vehicle Rent	Copy Machines	142	611	220	350	350	350
207-4040-6500-00	Interdept Vehicle Expense	General	1,227	120	850	0	0	0
207-4040-6510-00	Equip/Vehicle Main & Repair	General	0	0	50	0	0	0
207-4040-6680-01	Communication	Telephone	823	933	1,032	850	850	850
207-4040-6720-01	Fire/Liability Insurance	Liability Ins Interdept Charges	848	649	1,868	2,285	2,285	2,285
207-4040-7300-00	Advertising/Publicity	General	11,405	0	2,232	0	0	0
207-4040-7350-00	Printing	General	2,610	0	1,200	0	0	0
207-4040-7400-00	Office Supplies and Expenses	General	2,706	2,346	2,346	1,400	1,400	1,400
207-4040-7410-00	Postage	General	677	289	600	400	400	400
207-4040-7500-00	Subscriptions, Books & Periodi	General	0	0	50	0	0	0
207-4040-7550-80	Travel	Mileage Reimbursement	149	0	0	0	0	0
207-4040-7560-00	Conventions, Schools, Seminars	General	6,089	7,058	8,668	4,018	4,018	4,018
207-4040-7580-00	Dues and Memberships	General	830	60	600	375	375	375

Douglas County, Oregon  
 Health and Social Services Fund  
 Veterans Services

Department Detail

			Actual	Actual	Revised	Proposed	Approved	Adopted
			FY 14-15	FY 15-16	Budget	FY 17-18	FY 17-18	FY 17-18
207-4040-7850-00	Pre-employment Training	General	0	170	0	0	0	0
<b>Total Materials &amp; Services</b>			<b>31,500</b>	<b>20,048</b>	<b>24,051</b>	<b>13,131</b>	<b>13,131</b>	<b>13,131</b>
207-4040-8200-99	Furniture and Equipment	Noninventory	5,914	2,876	0	0	0	0
<b>Total Capital Outlay</b>			<b>5,914</b>	<b>2,876</b>	<b>0</b>	<b>0</b>	<b>0</b>	<b>0</b>
207-4040-9500-01	Transfers Out	General Fund	16,529	16,529	16,529	16,529	16,529	16,529
207-4040-9899-22	Intrafund Transfers	Accounting	3,282	0	0	0	0	0
207-4040-9899-24	Intrafund Transfers	Offices	5,168	0	0	0	0	0
207-4040-9899-41	Intrafund Transfers	Info Tech	1,454	0	0	0	0	0
207-4040-9899-50	Intrafund Transfers	Dept. Admin	1,800	0	0	0	0	0
<b>Total Other Requirements</b>			<b>28,233</b>	<b>16,529</b>	<b>16,529</b>	<b>16,529</b>	<b>16,529</b>	<b>16,529</b>
<b>Total Expenditures</b>			<b>277,507</b>	<b>225,665</b>	<b>283,776</b>	<b>284,608</b>	<b>284,608</b>	<b>284,608</b>

Douglas County, Oregon  
Health and Social Services Fund  
Veterans Services

PERSONNEL SERVICES					
	Actual	Actual	Revised	Budget	
	FTE	FTE	FTE	FY 17-18	
	<u>FY 14-15</u>	<u>FY 15-16</u>	<u>FY 16-17</u>	<u>FTE</u>	<u>Amount</u>
Veterans Service Officer	1.00	1.00	1.00	1.00	58,100
Veterans Claims Specialist	1.00	1.60	1.60	1.60	58,924
Department Assistant 4	<u>1.00</u>	<u>0.55</u>	<u>1.00</u>	<u>1.00</u>	<u>26,883</u>
Total Regular	<u>3.00</u>	<u>3.15</u>	<u>3.60</u>	<u>3.60</u>	<u>143,907</u>
Temporary					6,000
PERS		26.55%, 38.18%			39,800
Social Security		7.65%			11,468
Worker's Compensation		0.75%			1,124
Unemployment		1.50%			2,249
Medical & Dental Insurance		\$1,400/mo			<u>50,400</u>
Total Personnel Services					<u><u>254,948</u></u>