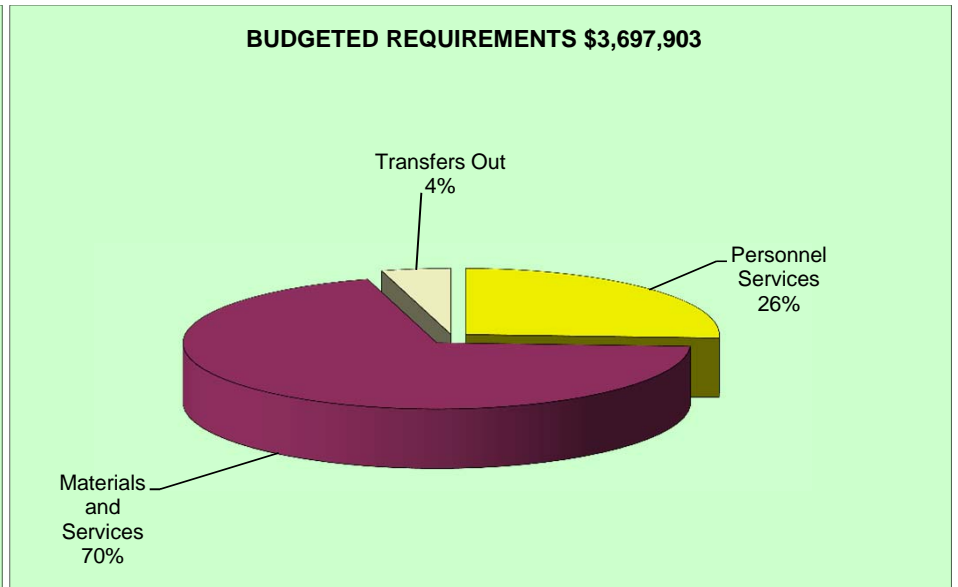
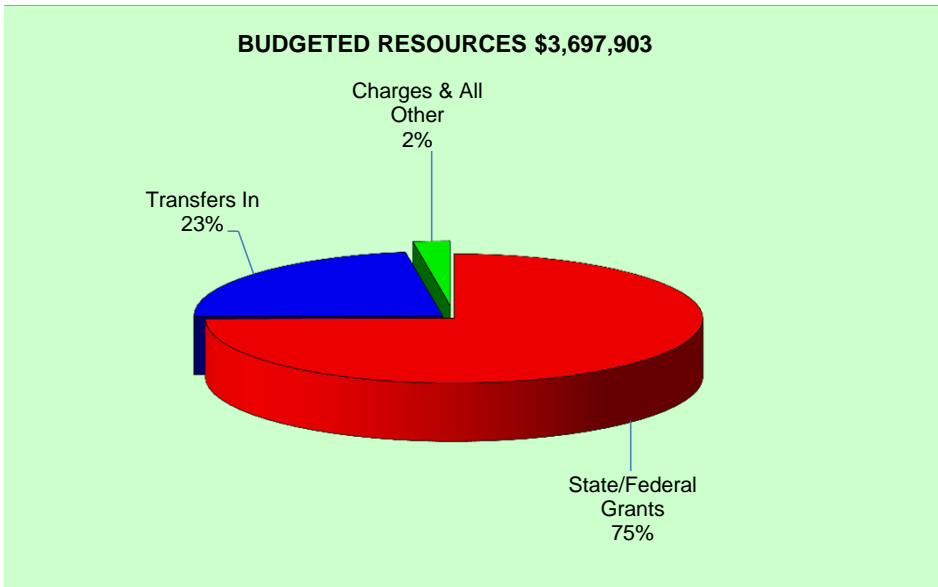
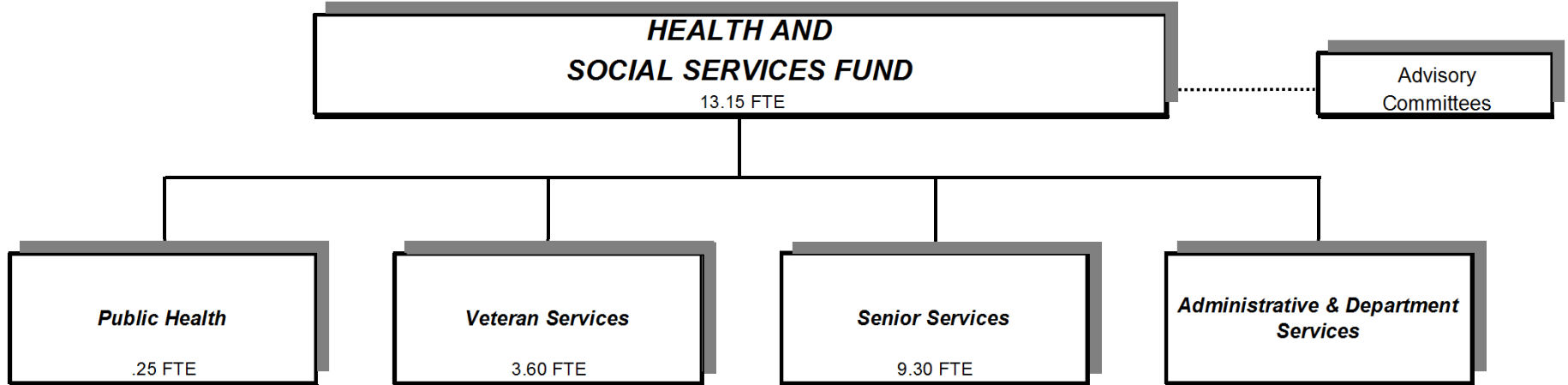


# DEPARTMENT OF HEALTH AND SOCIAL SERVICES



Douglas County, Oregon  
Health and Social Services Fund (207)  
Summary

	Actual FY 13-14	Actual FY 14-15	Actual FY 15-16	Revised Budget FY 16-17	Proposed FY 17-18	Approved FY 17-18	Adopted FY 17-18
<b><u>RESOURCES</u></b>							
<b><i>Beginning Fund Balance</i></b>							
Use Restricted by Payee	6,681,043	4,325,220	566,897	53,896			
Unrestricted Use	150,000	158,148	230,717				
	<u>6,831,043</u>	<u>4,483,368</u>	<u>797,614</u>	<u>53,896</u>			
<b><i>Revenues and Other Sources:</i></b>							
Divisional:							
Intergovernmental Revenues	14,692,106	3,761,937	3,063,193	2,812,921	2,769,803	2,769,803	2,769,803
Charges and Other Revenues	977,373	243,983	114,170	76,253	88,800	88,800	88,800
Interest	33,910	20,579	468				
Transfers In - General Fund	61,415						
Transfers In - Public Safety Fund	25,933	1,830					
Undesignated:							
Transfers In - General Fund	1,287,131	1,350,654	957,165	843,513	841,952	841,952	841,952
	<u>17,077,868</u>	<u>5,378,983</u>	<u>4,134,996</u>	<u>3,732,687</u>	<u>3,700,555</u>	<u>3,700,555</u>	<u>3,700,555</u>
<b>TOTAL RESOURCES</b>	<b>23,908,911</b>	<b>9,862,351</b>	<b>4,932,610</b>	<b>3,786,583</b>	<b>3,700,555</b>	<b>3,700,555</b>	<b>3,700,555</b>
<b><u>REQUIREMENTS</u></b>							
<b><i>Expenditures and Other Requirements:</i></b>							
Personnel Services	13,954,224	3,330,867	1,641,401	937,973	956,740	956,740	956,740
Materials & Services	4,523,400	5,199,539	2,270,465	2,686,756	2,581,121	2,581,121	2,581,121
Capital Outlay	50,196	8,106	2,876				
Transfers Out - General Fund	897,723	526,225	326,602	161,854	162,694	162,694	162,694
	<u>19,425,543</u>	<u>9,064,737</u>	<u>4,241,344</u>	<u>3,786,583</u>	<u>3,700,555</u>	<u>3,700,555</u>	<u>3,700,555</u>
<b><i>Ending Fund Balance</i></b>							
Use Restricted by Payee	4,325,220	566,897	429,199				
Unrestricted Use	158,148	230,717	262,067				
	<u>4,483,368</u>	<u>797,614</u>	<u>691,266</u>				
<b>TOTAL REQUIREMENTS</b>	<b>23,908,911</b>	<b>9,862,351</b>	<b>4,932,610</b>	<b>3,786,583</b>	<b>3,700,555</b>	<b>3,700,555</b>	<b>3,700,555</b>
<b>Change in Fund Balance</b>	<b>(2,347,675)</b>	<b>(3,685,754)</b>	<b>(106,348)</b>	<b>(53,896)</b>			
<b>Staffing FTE</b>	<b>197.90</b>	<b>73.80</b>	<b>45.35</b>	<b>13.85</b>	<b>13.15</b>	<b>13.15</b>	<b>13.15</b>