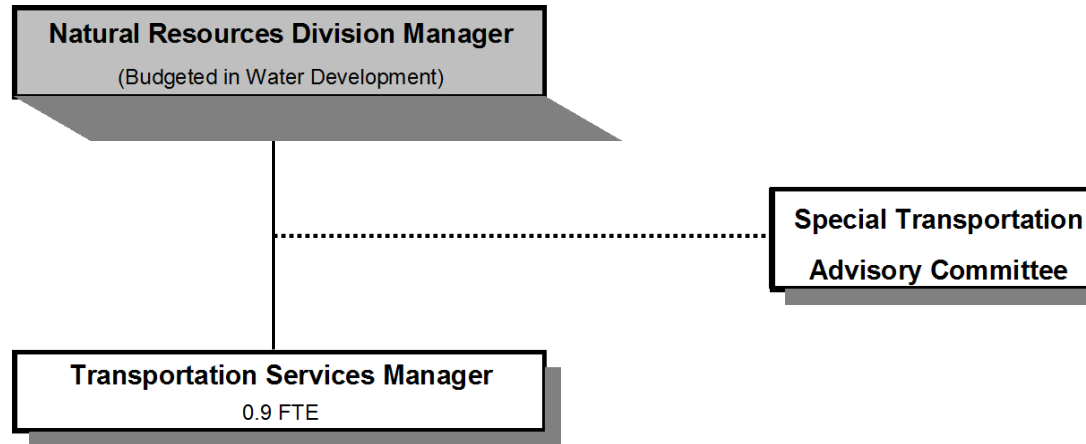


TRANSPORTATION SERVICES



Douglas County, Oregon
General Fund
Transportation Services (4060)

| | Actual FY 13-14 | Actual FY 14-15 | Actual FY 15-16 | Revised Budget FY 16-17 | Proposed FY 17-18 | Approved FY 17-18 | Adopted FY 17-18 |
|--|--------------------|--------------------|--------------------|-------------------------------|----------------------|----------------------|---------------------|
| <u>RESOURCES</u> | | | | | | | |
| Beginning Balance (Use Restricted) | | | 420,335 | 350,000 | 350,000 | 350,000 | 350,000 |
| Intergovernmental Revenues | | 1,139,268 | 1,304,285 | 1,860,513 | 1,199,260 | 1,199,260 | 1,199,260 |
| Charges and Other Revenues | | 1,625 | 4,271 | 2,450 | 2,450 | 2,450 | 2,450 |
| Transfers In - Health and Social Services Fund | | 279,624 | | | | | |
| Total Revenue | | 1,420,517 | 1,308,556 | 1,862,963 | 1,201,710 | 1,201,710 | 1,201,710 |
| TOTAL RESOURCES | | 1,420,517 | 1,728,891 | 2,212,963 | 1,551,710 | 1,551,710 | 1,551,710 |
| <u>REQUIREMENTS</u> | | | | | | | |
| Personnel Services | | 74,106 | 76,502 | 80,543 | 85,097 | 85,097 | 85,097 |
| Materials & Services | | 953,892 | 1,169,236 | 1,879,215 | 1,181,977 | 1,181,977 | 1,181,977 |
| Total Expenditures | | 1,027,998 | 1,245,738 | 1,959,758 | 1,267,074 | 1,267,074 | 1,267,074 |
| Ending Balance (Use Restricted) | | 420,335 | 510,969 | 281,019 | 312,450 | 312,450 | 312,450 |
| TOTAL REQUIREMENTS | | 1,448,333 | 1,756,707 | 2,240,777 | 1,579,524 | 1,579,524 | 1,579,524 |
| <u>Use of General County Resources</u> | | | | | | | |
| | | 27,816 | 27,816 | 27,814 | 27,814 | 27,814 | 27,814 |
| <u>Staffing FTE</u> | | | | | | | |
| | | 0.90 | 0.90 | 0.90 | 0.90 | 0.90 | 0.90 |

Douglas County, Oregon
 General Fund
 Transportation Services

Department Detail

| | | | Actual | Actual | Revised | Proposed | Approved | Adopted |
|---------------------------------|-------------------------------|------------------------------------|------------------|------------------|------------------|------------------|------------------|------------------|
| | | | FY 14-15 | FY 15-16 | Budget | FY 17-18 | FY 17-18 | FY 17-18 |
| | | | | | FY 16-17 | | | |
| 100-4060-3250-50 | State/Fed-Transportation Dept | Section 5310 Mobility Mgmt | 62,988 | 69,507 | 81,671 | 108,740 | 108,740 | 108,740 |
| 100-4060-3250-51 | State/Fed-Transportation Dept | Section 5310 Purchased Svcs | 346,808 | 302,604 | 326,763 | 304,810 | 304,810 | 304,810 |
| 100-4060-3250-54 | State/Fed-Transportation Dept | Section 5311 PM & Rehab | 57,941 | 125,456 | 67,114 | 44,865 | 44,865 | 44,865 |
| 100-4060-3250-56 | State/Fed-Transportation Dept | Section 5311 Small Cities & Rural | 184,223 | 255,472 | 263,856 | 309,555 | 309,555 | 309,555 |
| 100-4060-3250-59 | State/Fed-Transportation Dept | Section 5310 Equipment | 0 | 108,001 | 0 | 59,222 | 59,222 | 59,222 |
| 100-4060-3250-60 | State/Fed-Transportation Dept | Section 5310 Discretionary | 0 | 0 | 60,568 | 0 | 0 | 0 |
| 100-4060-3250-62 | State/Fed-Transportation Dept | Section 5311 Admin | 154,890 | 114,893 | 58,325 | 88,608 | 88,608 | 88,608 |
| 100-4060-3250-70 | State/Fed-Transportation Dept | Section 5309 Capital | 0 | 0 | 576,000 | 0 | 0 | 0 |
| 100-4060-3350-50 | State-Transportation Dept | Special Transport Operations | 315,225 | 328,352 | 385,251 | 267,650 | 267,650 | 267,650 |
| 100-4060-3350-51 | State-Transportation Dept | Special Transport Capital Assist | 0 | 0 | 40,965 | 7,000 | 7,000 | 7,000 |
| 100-4060-3350-53 | State-Transportation Dept | Special Transport - STO | 17,193 | 0 | 0 | 0 | 0 | 0 |
| 100-4060-3350-55 | State-Transportation Dept | STF Discretionary Funds-Operations | 0 | 0 | 0 | 8,810 | 8,810 | 8,810 |
| 100-4060-3875-00 | Expense Reimbursements | General | 1,625 | 4,271 | 2,450 | 2,450 | 2,450 | 2,450 |
| 100-4060-3900-17 | Transfers In | Health and Social Services | 279,624 | 0 | 0 | 0 | 0 | 0 |
| Total Revenue | | | 1,420,517 | 1,308,556 | 1,862,963 | 1,201,710 | 1,201,710 | 1,201,710 |
| 100-4060-4000-00 | Regular Employees | General | 42,892 | 45,302 | 47,721 | 50,423 | 50,423 | 50,423 |
| 100-4060-4030-00 | Temporary Employees | General | 0 | 1,014 | 1,100 | 0 | 0 | 0 |
| 100-4060-4500-00 | PERS | General | 11,103 | 10,533 | 11,095 | 13,387 | 13,387 | 13,387 |
| 100-4060-4510-00 | Social Security | General | 3,279 | 3,462 | 3,735 | 3,857 | 3,857 | 3,857 |
| 100-4060-4520-00 | Workers' Compensation | General | 300 | 160 | 366 | 378 | 378 | 378 |
| 100-4060-4530-00 | Medical and Dental Insurance | General | 16,232 | 15,893 | 16,380 | 16,800 | 16,800 | 16,800 |
| 100-4060-4540-00 | Unemployment | General | 300 | 138 | 146 | 252 | 252 | 252 |
| Total Personnel Services | | | 74,106 | 76,502 | 80,543 | 85,097 | 85,097 | 85,097 |
| 100-4060-5099-00 | Other Professional Services | General | 0 | 0 | 0 | 1,100 | 1,100 | 1,100 |
| 100-4060-5300-00 | Health & SS Contracts | General | 0 | 0 | 80,000 | 30,743 | 30,743 | 30,743 |
| 100-4060-5335-70 | Senior Service Contracts | Section 5309 Capital | 0 | 0 | 576,000 | 0 | 0 | 0 |
| 100-4060-5335-81 | Senior Service Contracts | Special Transportation-STO | 17,196 | 13,969 | 0 | 0 | 0 | 0 |
| 100-4060-5335-82 | Senior Service Contracts | Special Transportation-Providers | 155,886 | 261,740 | 289,610 | 267,650 | 267,650 | 267,650 |
| 100-4060-5335-85 | Senior Service Contracts | Transportation Providers | 27,816 | 27,816 | 27,814 | 27,814 | 27,814 | 27,814 |
| 100-4060-5335-86 | Senior Service Contracts | Transportation PM | 84,738 | 106,872 | 67,114 | 44,865 | 44,865 | 44,865 |
| 100-4060-5335-87 | Senior Service Contracts | Transportation Purchased Svcs | 335,180 | 296,983 | 326,763 | 304,810 | 304,810 | 304,810 |
| 100-4060-5335-88 | Senior Service Contracts | Transportation 5310 Equip | 0 | 122,122 | 60,568 | 59,222 | 59,222 | 59,222 |
| 100-4060-5335-91 | Senior Service Contracts | Transportation 5311 Operations | 245,632 | 263,856 | 263,856 | 309,555 | 309,555 | 309,555 |
| 100-4060-5335-94 | Senior Service Contracts | Trans 5311 Admin | 52,720 | 58,324 | 58,325 | 88,608 | 88,608 | 88,608 |

Douglas County, Oregon
 General Fund
 Transportation Services

Department Detail

| | | | Actual | Actual | Revised | Proposed | Approved | Adopted |
|-------------------------------------|--------------------------------|-----------------------------------|------------------|------------------|------------------|------------------|------------------|------------------|
| | | | FY 14-15 | FY 15-16 | Budget | FY 17-18 | FY 17-18 | FY 17-18 |
| | | | | | FY 16-17 | | | |
| 100-4060-5335-95 | Senior Service Contracts | STF Discretionary-Operations | 0 | 0 | 54,000 | 8,810 | 8,810 | 8,810 |
| 100-4060-5335-96 | Senior Service Contracts | STF Discretionary-Capital | 0 | 0 | 43,865 | 7,000 | 7,000 | 7,000 |
| 100-4060-6290-00 | Software Purchases | General | 18,000 | 1,500 | 1,100 | 1,100 | 1,100 | 1,100 |
| 100-4060-6290-10 | Software Purchases | Software Updates/Maintenance | 8,272 | 9,213 | 15,500 | 16,000 | 16,000 | 16,000 |
| 100-4060-6295-00 | Equipment-Noninventory | General | 740 | 1,747 | 2,000 | 2,000 | 2,000 | 2,000 |
| 100-4060-6299-00 | Other Materials and Supplies | General | 364 | 0 | 600 | 600 | 600 | 600 |
| 100-4060-6450-02 | Equipment/Vehicle Rent | Copy Machines | 0 | 0 | 30 | 30 | 30 | 30 |
| 100-4060-6500-00 | Interdept Vehicle Expense | General | 190 | 3 | 1,000 | 1,000 | 1,000 | 1,000 |
| 100-4060-6510-00 | Equip/Vehicle Main & Repair | General | 0 | 0 | 100 | 100 | 100 | 100 |
| 100-4060-6510-02 | Equip/Vehicle Main & Repair | Equipment Service Contracts | 0 | 0 | 50 | 50 | 50 | 50 |
| 100-4060-6680-01 | Communication | Telephone | 2,392 | 3,342 | 4,500 | 4,500 | 4,500 | 4,500 |
| 100-4060-6720-01 | Fire/Liability Insurance | Liability Insurance Interdept Chg | 275 | 100 | 400 | 400 | 400 | 400 |
| 100-4060-7300-00 | Advertising/Publicity | General | 2,219 | 60 | 3,000 | 3,000 | 3,000 | 3,000 |
| 100-4060-7400-00 | Office Supplies and Expenses | General | 384 | 179 | 300 | 300 | 300 | 300 |
| 100-4060-7410-00 | Postage | General | 0 | 0 | 20 | 20 | 20 | 20 |
| 100-4060-7560-00 | Conventions, Schools, Seminars | General | 1,098 | 570 | 1,500 | 1,500 | 1,500 | 1,500 |
| 100-4060-7580-00 | Dues and Memberships | General | 790 | 840 | 1,000 | 1,000 | 1,000 | 1,000 |
| 100-4060-7800-00 | Legal Publication and Printing | General | 0 | 0 | 200 | 200 | 200 | 200 |
| Total Materials and Services | | | 953,892 | 1,169,236 | 1,879,215 | 1,181,977 | 1,181,977 | 1,181,977 |
| Total Expenditures | | | 1,027,998 | 1,245,738 | 1,959,758 | 1,267,074 | 1,267,074 | 1,267,074 |

7/6/2017

Douglas County, Oregon
 General Fund
 Transportation Services

| PERSONNEL SERVICES | | | | | |
|--------------------------------|----------------|----------|----------|---------|----------|
| | | Actual | Actual | Revised | Budget |
| | | FTE | FTE | Budget | FY 17-18 |
| | | FY 14-15 | FY 15-16 | FTE | FTE |
| | | | | | Amount |
| Transportation Systems Manager | | 0.90 | 0.90 | 0.90 | 50,423 |
| PERS | 26.55%, 38.18% | | | | 13,387 |
| Social Security | 7.65% | | | | 3,857 |
| Worker's Compensation | 0.75% | | | | 378 |
| Unemployment | 0.50% | | | | 252 |
| Medical & Dental Insurance | \$1,400/mo | | | | 16,800 |
| Total Personnel Services | | | | | 85,097 |