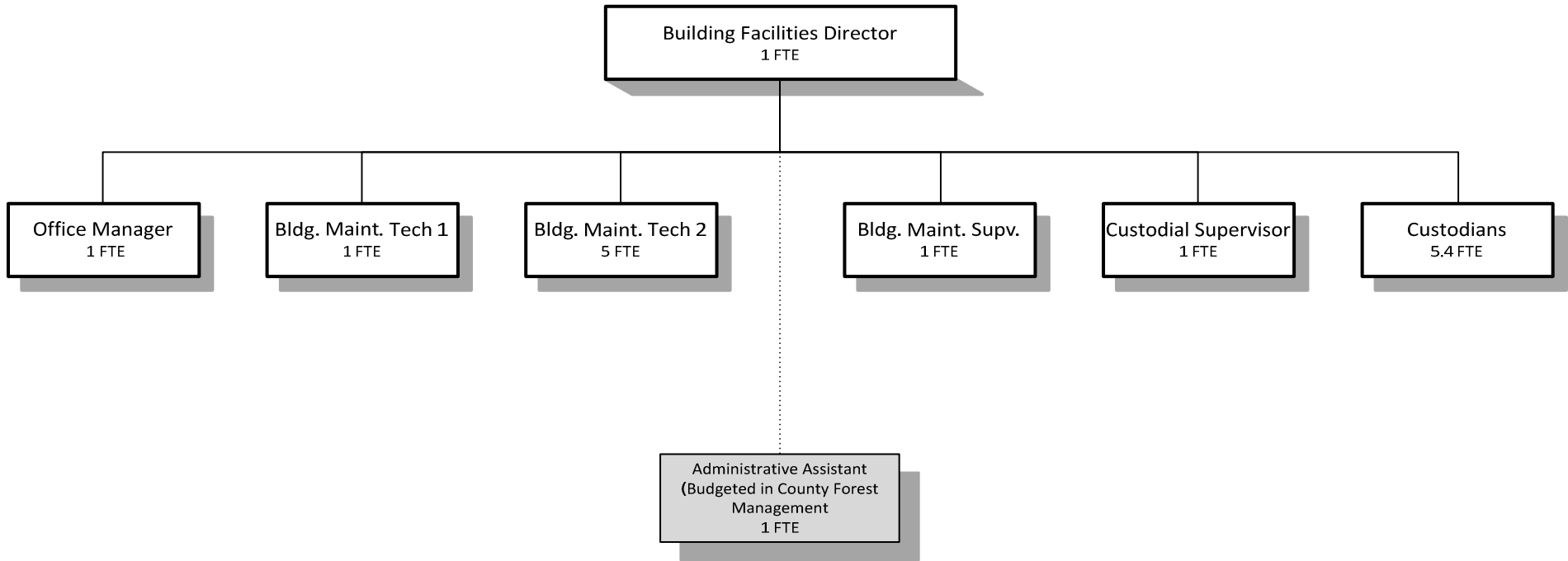


# **BUILDING FACILITES**



Douglas County, Oregon  
 General Fund  
 Building Facilities (0800)

	Actual FY 13-14	Actual FY 14-15	Actual FY 15-16	Revised Budget FY 16-17	Proposed FY 17-18	Approved FY 17-18	Adopted FY 17-18
<b><u>RESOURCES</u></b>							
Intergovernmental Revenues	50,000	50,000	60,071	50,000			
Charges for Services	4,491	5,359	2,441	2,700	1,710	1,710	1,710
Total	54,491	55,359	62,512	52,700	1,710	1,710	1,710
<b><u>REQUIREMENTS</u></b>							
Personnel Services	1,066,586	1,069,248	1,002,517	1,021,871	1,091,493	1,091,493	1,091,493
Materials and Services	794,349	752,561	795,271	728,503	751,525	751,525	751,525
Capital Outlay	26,446				1,500	1,500	1,500
Total	1,887,381	1,821,809	1,797,788	1,750,374	1,844,518	1,844,518	1,844,518
<b>General Resource Contribution Required</b>	1,832,890	1,766,450	1,735,276	1,697,674	1,842,808	1,842,808	1,842,808
<b>Staffing FTE</b>	<b>18.01</b>	<b>17.51</b>	<b>15.51</b>	<b>15.51</b>	<b>15.40</b>	<b>15.40</b>	<b>15.40</b>
Capital Outlay - Equipment Replacement							1,500

Douglas County, Oregon  
General Fund  
Building Facilities

Department Detail

			Actual	Actual	Revised	Proposed	Approved	Adopted
			FY 14-15	FY 15-16	Budget	FY 17-18	FY 17-18	Budget
			FY 14-15	FY 15-16	FY 16-17	FY 17-18	FY 17-18	FY 17-18
100-0800-3290-02	State/Fed-Other Assistance	Emergency Mgmt Assistance	0	10,071	0	0	0	0
100-0800-3650-00	Other Intergovernmental	General	50,000	50,000	50,000	0	0	0
100-0800-3820-03	Rents, Leases and Royalties	Land & Building	1,200	1,200	1,200	1,200	1,200	1,200
100-0800-3870-06	Other Sales	ATM Transaction Fees	795	1,131	500	500	500	500
100-0800-3879-00	Miscellaneous	General	1,628	110	1,000	10	10	10
100-0800-3879-90	Miscellaneous	Subrogating Claim Recovery	1,736	0	0	0	0	0
<b>Total Revenue</b>			<b>55,359</b>	<b>62,512</b>	<b>52,700</b>	<b>1,710</b>	<b>1,710</b>	<b>1,710</b>
100-0800-4000-00	Regular Employees	General	563,453	524,663	545,917	585,610	585,610	585,610
100-0800-4030-00	Temporary Employees	General	32,552	16,584	17,000	18,000	18,000	18,000
100-0800-4050-00	Overtime	General	4,603	34,660	6,000	3,000	3,000	3,000
100-0800-4500-00	PERS	General	152,068	142,847	147,138	168,279	168,279	168,279
100-0800-4510-00	Social Security	General	43,951	43,054	43,522	46,406	46,406	46,406
100-0800-4520-00	Workers' Compensation	General	2,103	4,012	11,378	12,132	12,132	12,132
100-0800-4520-01	Workers' Compensation	Workers Comp Claims	0	2,000	0	0	0	0
100-0800-4530-00	Medical and Dental Insurance	General	268,716	231,258	247,502	252,000	252,000	252,000
100-0800-4540-00	Unemployment	General	1,802	3,439	3,414	6,066	6,066	6,066
<b>Total Personnel Services</b>			<b>1,069,248</b>	<b>1,002,517</b>	<b>1,021,871</b>	<b>1,091,493</b>	<b>1,091,493</b>	<b>1,091,493</b>
100-0800-5099-00	Other Professional Services	General	0	0	16,978	5,000	5,000	5,000
100-0800-6060-00	Tools	General	2,730	2,796	3,000	3,000	3,000	3,000
100-0800-6065-00	Fuel and Oil	General	6,774	4,017	5,500	4,500	4,500	4,500
100-0800-6290-00	Software Purchases	General	478	114	1,000	500	500	500
100-0800-6295-00	Equipment-Noninventory	General	585	1,202	6,503	5,500	5,500	5,500
100-0800-6450-00	Equipment/Vehicle Rent	General	5,616	2,321	2,500	5,000	5,000	5,000
100-0800-6500-00	Interdept Vehicle Expense	General	0	37	0	0	0	0
100-0800-6510-00	Equip/Vehicle Main & Repair	General	3,079	2,292	1,500	1,500	1,500	1,500
100-0800-6510-02	Equip/Vehicle Main & Repair	Equipment Service Contracts	56,331	65,043	44,000	53,100	53,100	53,100
100-0800-6550-00	Building and Grounds Main	General	69,767	80,437	62,000	58,925	58,925	58,925
100-0800-6550-02	Building and Grounds Main	Electrical	5,895	5,506	6,000	6,500	6,500	6,500
100-0800-6550-05	Building and Grounds Main	Custodial Supplies	22,608	22,011	20,000	20,000	20,000	20,000
100-0800-6550-20	Building and Grounds Main	M&R Contracts	70,030	83,333	35,500	34,200	34,200	34,200
100-0800-6680-01	Communication	Telephone	3,702	3,354	3,800	3,900	3,900	3,900

Douglas County, Oregon  
 General Fund  
 Building Facilities

Department Detail

			Actual	Actual	Revised	Proposed	Approved	Adopted
			FY 14-15	FY 15-16	Budget	FY 17-18	FY 17-18	Budget
			FY 14-15	FY 15-16	FY 16-17	FY 17-18	FY 17-18	FY 17-18
100-0800-6685-01	Utilities	Electric	318,613	331,019	326,400	349,000	349,000	349,000
100-0800-6685-02	Utilities	Heat	99,752	100,307	101,000	107,200	107,200	107,200
100-0800-6685-03	Utilities	Water and Sewer	77,707	78,025	78,600	80,100	80,100	80,100
100-0800-6685-04	Utilities	Garbage	4,720	5,618	5,172	5,000	5,000	5,000
100-0800-6720-01	Fire/Liability Insurance	Liability Ins Interdept Charges	900	900	4,300	4,300	4,300	4,300
100-0800-6730-00	Liability Claims	General	0	1,076	0	0	0	0
100-0800-7400-00	Office Supplies and Expenses	General	1,284	697	900	800	800	800
100-0800-7410-00	Postage	General	94	37	50	50	50	50
100-0800-7550-00	Travel	General	495	0	1,000	500	500	500
100-0800-7560-00	Conventions, Schools, Seminars	General	310	2,035	1,000	1,000	1,000	1,000
100-0800-7800-00	Legal Publication and Printing	General	265	944	500	500	500	500
100-0800-7850-00	Pre-employment Testing	General	826	1,179	1,000	1,000	1,000	1,000
100-0800-7900-00	Miscellaneous	General	0	971	300	450	450	450
<b>Total Materials and Services</b>			<b>752,561</b>	<b>795,271</b>	<b>728,503</b>	<b>751,525</b>	<b>751,525</b>	<b>751,525</b>
100-0800-8200-99	Furniture and Equipment	Noninventory	0	0	0	1,500	1,500	1,500
<b>Total Capital Outlay</b>			<b>0</b>	<b>0</b>	<b>0</b>	<b>1,500</b>	<b>1,500</b>	<b>1,500</b>
<b>Total Expenditures</b>			<b>1,821,809</b>	<b>1,797,788</b>	<b>1,750,374</b>	<b>1,844,518</b>	<b>1,844,518</b>	<b>1,844,518</b>

Douglas County, Oregon  
General Fund  
Building Facilities

PERSONNEL SERVICES					
	Actual	Actual	Revised	Budget	
	FTE	FTE	FTE	FY 17-18	
	<u>FY 14-15</u>	<u>FY 15-16</u>	<u>FY 16-17</u>	<u>FTE</u>	<u>Amount</u>
Building Facilities Director				1.00	73,258
IS and Building Facilities Director	0.11	0.11	0.11		
Building Maintenance Supervisor		1.00	1.00	1.00	60,549
Building Maintenance Tech 4	1.00				
Building Maintenance Tech 3	2.00	2.00	1.00		
Building Maintenance Tech 2			1.00	5.00	204,573
Building Maintenance Tech 1	5.00	4.00	4.00	1.00	30,962
Custodian Foreman	1.00	1.00	1.00	1.00	32,811
Custodian	7.40	6.40	6.40	5.40	147,832
Office Manager 1	1.00	1.00	1.00	1.00	35,625
Total Regular	<u>17.51</u>	<u>15.51</u>	<u>15.51</u>	<u>15.40</u>	<u>585,610</u>
Temporary					18,000
Overtime					3,000
PERS		26.55%, 38.18%			168,279
Social Security		7.65%			46,406
Worker's Compensation		2.00%			12,132
Unemployment		1.00%			6,066
Medical & Dental Insurance		\$1,400/mo			<u>252,000</u>
Total Personnel Services					<u><u>1,091,493</u></u>