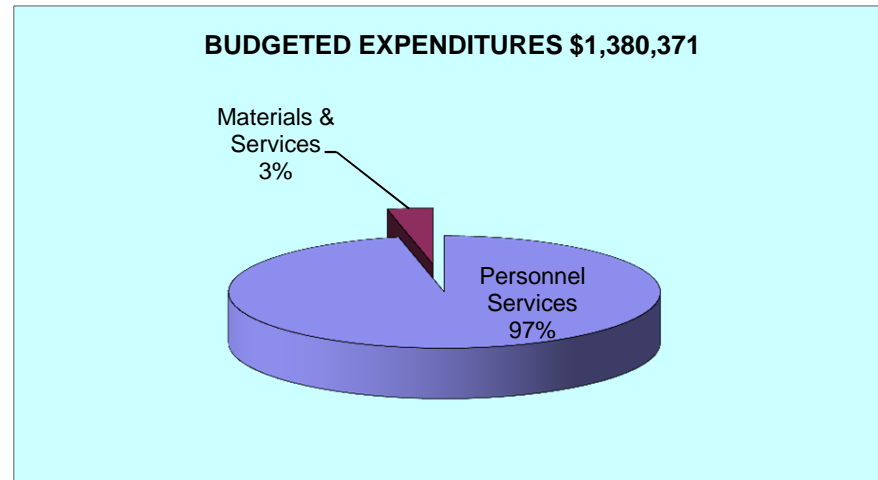
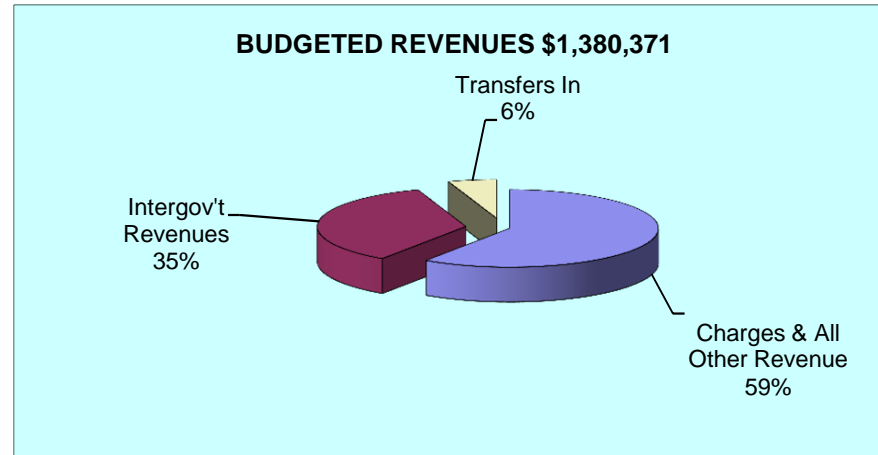
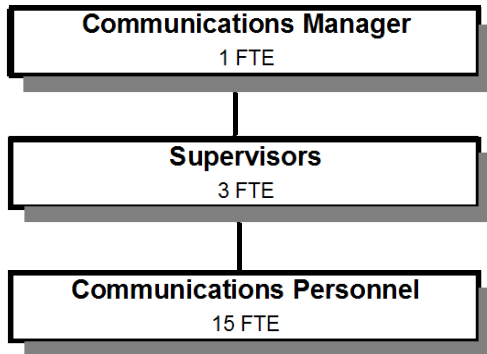


COMMUNICATIONS 911 & DISPATCH



Douglas County, Oregon
Public Safety Fund
Communications 911 and Dispatch (1800)

	Actual FY 12-13	Actual FY 13-14	Actual FY 14-15	Revised Budget FY 15-16	Proposed FY 16-17	Approved FY 16-17	Adopted FY 16-17
<u>RESOURCES</u>							
Beginning Balance	10,822	204,780	218,801				
Revenues:							
Charges and Other Revenues	864,692	730,670	772,446	797,195	821,036	821,036	821,036
Intergovernmental Revenues	521,043	510,183	504,898	486,875	486,875	486,875	486,875
Transfers In - General Fund				89,153	72,460	72,460	72,460
Total Revenue	1,385,735	1,240,853	1,277,344	1,373,223	1,380,371	1,380,371	1,380,371
TOTAL RESOURCES	1,396,557	1,445,633	1,496,145	1,373,223	1,380,371	1,380,371	1,380,371
<u>REQUIREMENTS</u>							
Personnel Services	1,822,460	1,812,497	1,884,376	1,931,587	1,945,510	1,945,510	1,945,510
Materials & Services	50,780	19,901	36,176	56,450	68,120	68,120	68,120
	1,873,240	1,832,398	1,920,552	1,988,037	2,013,630	2,013,630	2,013,630
Less: Reimbursement from Enforcement	(681,463)	(605,566)	(606,128)	(614,814)	(633,259)	(633,259)	(633,259)
Total Expenditures	1,191,777	1,226,832	1,314,424	1,373,223	1,380,371	1,380,371	1,380,371
Ending Balance	204,780	218,801	181,721				
TOTAL REQUIREMENTS	1,396,557	1,445,633	1,496,145	1,373,223	1,380,371	1,380,371	1,380,371
Staffing FTE	20.00	20.00	20.00	19.00	19.00	19.00	19.00

Douglas County, Oregon
Public Safety Fund
Communications 911 and Dispatch

Department Detail

			Actual	Actual	Revised	Proposed	Approved	Adopted
			FY 13-14	FY 14-15	Budget	FY 16-17	FY 16-17	FY 16-17
					FY 15-16			
220-1800-2380-00	Communications Contracts	General	727,008	769,751	794,695	818,536	818,536	818,536
220-1800-3450-06	Shared Revenues	911 Revenues	510,183	504,898	486,875	486,875	486,875	486,875
220-1800-3800-01	Interest	General Investments	110	(5)	0	0	0	0
220-1800-3879-00	Miscellaneous	General	3,552	2,700	2,500	2,500	2,500	2,500
220-1800-3900-01	Transfers In	General Fund	0	0	89,153	72,460	72,460	72,460
Total Revenue			1,240,853	1,277,344	1,373,223	1,380,371	1,380,371	1,380,371
220-1800-4000-00	Regular Employees	General	1,016,385	1,042,625	1,044,593	1,036,300	1,036,300	1,036,300
220-1800-4050-00	Overtime	General	88,719	109,028	87,500	95,000	95,000	95,000
220-1800-4500-00	PERS	General	294,061	300,544	322,311	321,407	321,407	321,407
220-1800-4510-00	Social Security	General	80,756	84,907	86,605	86,544	86,544	86,544
220-1800-4520-00	Workers' Compensation	General	3,868	4,031	3,962	8,485	8,485	8,485
100-1800-4520-01	Workers' Compensation	Workers Comp Claims	1,411	0	0	0	0	0
220-1800-4530-00	Medical and Dental Insurance	General	321,871	341,514	383,220	394,380	394,380	394,380
220-1800-4540-00	Unemployment	General	5,426	1,727	3,396	3,394	3,394	3,394
Total Personnel Services			1,812,497	1,884,376	1,931,587	1,945,510	1,945,510	1,945,510
220-1800-5000-00	Legal Services	General	0	0	1,500	1,500	1,500	1,500
220-1800-6290-00	Software Purchases	General	143	134	1,500	1,500	1,500	1,500
220-1800-6290-10	Software Purchases	Software Updates/Maintenance	0	0	0	170	170	170
220-1800-6295-00	Equipment-Noninventory	General	4,912	2,861	7,500	7,500	7,500	7,500
220-1800-6460-00	Software Rental	General	940	20,221	22,000	22,000	22,000	22,000
220-1800-6500-00	Interdept Vehicle Expense	General	660	593	2,000	2,000	2,000	2,000
220-1800-6510-02	Equip/Vehicle Main & Repair	Equip Service Contracts	3,720	0	5,000	5,000	5,000	5,000
220-1800-6680-01	Communication	Telephone	224	1,568	2,000	2,000	2,000	2,000
220-1800-6720-01	Fire/Liability Insurance	Liability Ins Charges	5,400	6,000	5,500	17,000	17,000	17,000
220-1800-7400-00	Office Supplies and Expenses	General	1,382	1,603	2,500	2,500	2,500	2,500
220-1800-7410-00	Postage	General	111	180	300	300	300	300
220-1800-7550-00	Travel	General	136	117	1,000	1,000	1,000	1,000
220-1800-7560-00	Conventions, Schools, Seminars	General	2,153	1,128	3,000	3,000	3,000	3,000

Douglas County, Oregon
 Public Safety Fund
 Communications 911 and Dispatch

Department Detail

			Actual	Actual	Revised	Proposed	Approved	Adopted
			FY 13-14	FY 14-15	Budget	FY 16-17	FY 16-17	FY 16-17
					FY 15-16			
220-1800-7580-00	Dues and Memberships	General	120	0	150	150	150	150
220-1800-7850-00	Pre-employment Testing	General	0	1,771	2,500	2,500	2,500	2,500
Total Materials and Services			19,901	36,176	56,450	68,120	68,120	68,120
Total Expenditures before Intrafund Transfers			1,832,398	1,920,552	1,988,037	2,013,630	2,013,630	2,013,630
220-1800-9899-80	Intrafund Transfers	Sheriff Enforcement	(605,566)	(606,128)	(614,814)	(633,259)	(633,259)	(633,259)
Total Expenditures			1,226,832	1,314,424	1,373,223	1,380,371	1,380,371	1,380,371

Douglas County, Oregon
Public Safety Fund
Communications 911 and Dispatch

PERSONNEL SERVICES					
	Actual	Actual	Revised	Budget	
	FTE	FTE	Budget	FY 16-17	
	<u>FY 13-14</u>	<u>FY 14-15</u>	<u>FY 15-16</u>	<u>FTE</u>	<u>Amount</u>
Communication Supervisor-Basic	3.00	3.00	3.00	3.00	200,770
Communications Officer-Basic	16.00	16.00	15.00	15.00	758,300
Sergeant	1.00	1.00	1.00	1.00	77,230
Total Regular	<u>20.00</u>	<u>20.00</u>	<u>19.00</u>	<u>19.00</u>	<u>1,036,300</u>
Overtime					95,000
PERS		23.25%, 32.48%			321,407
Social Security		7.65%			86,544
Worker's Compensation		0.75%			8,485
Unemployment		0.30%			3,394
Medical & Dental Insurance		Varied			394,380
Total Personnel Services					<u><u>1,945,510</u></u>