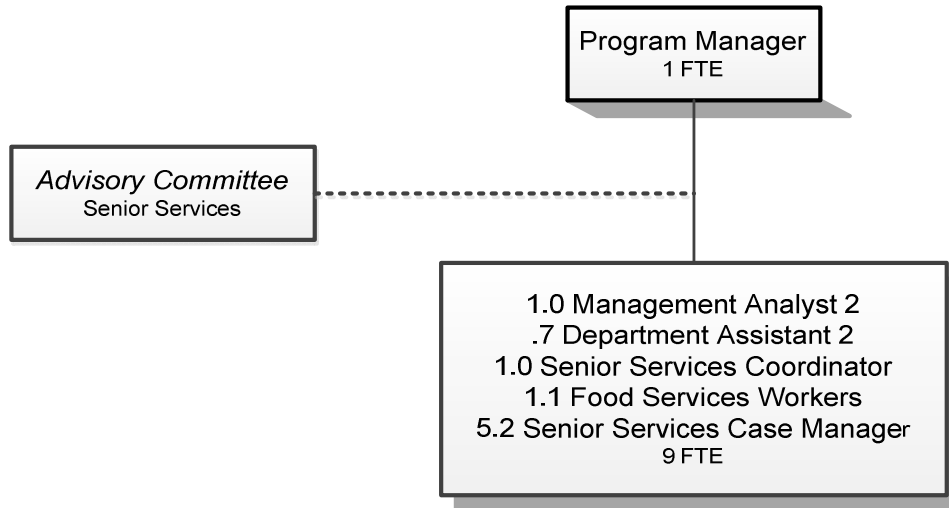


# SENIOR SERVICES



Douglas County, Oregon  
Health and Social Services Fund  
Senior Services Division (4050)

	Actual FY 12-13	Actual FY 13-14	Actual FY 14-15	Revised Budget FY 15-16	Proposed FY 16-17	Approved FY 16-17	Adopted FY 16-17
<b><u>RESOURCES</u></b>							
Intergovernmental Revenues	825,391	915,367	1,256,059	1,399,022	1,437,387	1,437,387	1,437,387
Charges and Other Revenues	83,962	82,814	68,244	70,240	74,253	74,253	74,253
Total	<u>909,353</u>	<u>998,181</u>	<u>1,324,303</u>	<u>1,469,262</u>	<u>1,511,640</u>	<u>1,511,640</u>	<u>1,511,640</u>
<b><u>REQUIREMENTS</u></b>							
Personnel Services	365,731	436,177	556,575	669,254	659,936	659,936	659,936
Materials & Services	628,472	646,351	904,617	910,400	944,095	944,095	944,095
Capital Outlay			2,192				
Transfers Out - General Fund	37,569	50,739	47,274	47,274	47,275	47,275	47,275
Add: Expense Reimbursements to Other Divisions	66,361	64,309	21,870				
Total	<u>1,098,133</u>	<u>1,197,576</u>	<u>1,532,528</u>	<u>1,626,928</u>	<u>1,651,306</u>	<u>1,651,306</u>	<u>1,651,306</u>
<b><i>Use of General County Resources</i></b>	188,780	199,395	208,225	157,666	139,666	139,666	139,666
<b>Staffing FTE</b>	<b>7.30</b>	<b>9.70</b>	<b>9.30</b>	<b>10.30</b>	<b>10.00</b>	<b>10.00</b>	<b>10.00</b>

Douglas County, Oregon  
 Health and Social Services Fund  
 Senior Services

Department Detail

			Actual	Actual	Revised	Proposed	Approved	Adopted
			FY 13-14	FY 14-15	Budget	FY 16-17	FY 16-17	FY 16-17
					FY 15-16			
207-4050-2680-01	Senior Services Program Rev	Congregate Meals	59,755	51,189	56,296	54,665	54,665	54,665
207-4050-2680-02	Senior Services Program Rev	Home Delivered Meals	10,379	10,675	12,744	11,662	11,662	11,662
207-4050-2680-10	Senior Services Program Rev	Home Care	11,701	3,420	1,200	7,926	7,926	7,926
207-4050-3210-00	State/Fed-Sr/Disabled Div	General	52,027	122,799	64,000	28,440	28,440	28,440
207-4050-3210-01	State/Fed-Sr/Disabled Div	SSD Title 19 Reimbursement	83,573	68,059	92,309	136,978	136,978	136,978
207-4050-3210-03	State/Fed-Sr/Disabled Div	OAA IIIB Social Services	146,291	109,548	164,012	164,952	164,952	164,952
207-4050-3210-04	State/Fed-Sr/Disabled Div	OAA IIIC1 Congregate Meals	210,217	221,696	205,174	212,165	212,165	212,165
207-4050-3210-05	State/Fed-Sr/Disabled Div	OAA IIIC2 Home Delivered Meals	130,592	126,913	105,305	108,055	108,055	108,055
207-4050-3210-06	State/Fed-Sr/Disabled Div	USDA Cash-in-Lieu	64,332	64,332	64,332	75,191	75,191	75,191
207-4050-3210-07	State/Fed-Sr/Disabled Div	OAA IIID In-Home Service	0	0	14,386	11,774	11,774	11,774
207-4050-3210-15	State/Fed-Sr/Disabled Div	OAA IIIE Family Caregiver	37,665	60,981	87,419	73,382	73,382	73,382
207-4050-3210-20	State/Fed-Sr/Disabled Div	VII B Elder Abuse Prevention	40	4,329	2,226	2,229	2,229	2,229
207-4050-3220-10	State/Fed-Adult/Family Ser Div	Title 19-Home Delivered Meals	4,493	19,462	18,812	21,370	21,370	21,370
207-4050-3310-00	State-Sr/Disabled Div	General	0	0	0	66,901	66,901	66,901
207-4050-3310-01	State-Sr/Disabled Div	Oregon Project Independence	47,797	124,039	211,931	141,000	141,000	141,000
207-4050-3310-02	State-Sr/Disabled Div	OPI Home Care Worker	121,471	223,476	187,211	270,000	270,000	270,000
207-4050-3310-04	State-Sr/Disabled Div	ADRC Gatekeeper	0	36,923	39,627	0	0	0
207-4050-3310-05	State-Sr/Disabled Div	ADRC Options Counseling	1,735	28,639	42,563	26,687	26,687	26,687
207-4050-3310-06	State-Sr/Disabled Div	ADRC Mental Health	4,634	30,384	36,963	50,000	50,000	50,000
207-4050-3310-07	State-Sr/Disabled Div	ADRC Alzheimer's	0	2,874	20,000	30,557	30,557	30,557
207-4050-3310-08	State-Sr/Disabled Div	ADRC Veterans	0	1,105	0	17,706	17,706	17,706
207-4050-3395-00	Local Assistance	General	10,500	10,500	42,752	0	0	0
207-4050-3840-xx	Contributions and Donations	Various	206	20	0	0	0	0
207-4050-3875-00	Expense Reimbursements	General	773	285	0	0	0	0
207-4050-3879-00	Miscellaneous	General	0	2,655	0	0	0	0
<b>Total Revenue</b>			<b>998,181</b>	<b>1,324,303</b>	<b>1,469,262</b>	<b>1,511,640</b>	<b>1,511,640</b>	<b>1,511,640</b>
207-4050-4000-00	Regular Employees	General	220,126	306,348	376,454	373,212	373,212	373,212
207-4050-4030-00	Temporary Employees	General	63,346	19,895	22,000	25,048	25,048	25,048
207-4050-4500-00	PERS	General	60,203	78,209	102,289	93,598	93,598	93,598
207-4050-4510-00	Social Security	General	21,068	23,892	30,482	30,467	30,467	30,467
207-4050-4520-00	Workers' Compensation	General	1,016	2,277	2,789	2,987	2,987	2,987

Douglas County, Oregon  
Health and Social Services Fund  
Senior Services

Department Detail

			Actual	Actual	Revised Budget	Proposed	Approved	Adopted
			FY 13-14	FY 14-15	FY 15-16	FY 16-17	FY 16-17	FY 16-17
207-4050-4530-00	Medical and Dental Insurance	General	68,432	123,665	131,654	131,040	131,040	131,040
207-4050-4540-00	Unemployment	General	1,986	2,289	3,586	3,584	3,584	3,584
<b>Total Personnel Services</b>			<b>436,177</b>	<b>556,575</b>	<b>669,254</b>	<b>659,936</b>	<b>659,936</b>	<b>659,936</b>
207-4050-5099-00	Other Professional Services	General	5,164	5,643	448	17,518	17,518	17,518
207-4050-5300-00	Health & Social Svcs Contracts	General	0	29,577	105,213	96,960	96,960	96,960
207-4050-5335-00	Senior Service Contracts	General	6,000	0	0	0	0	0
207-4050-5335-05	Senior Service Contracts	Food Services Contracts	214,218	224,391	264,745	249,189	249,189	249,189
207-4050-5335-07	Senior Service Contracts	Other Agency Food Service	14,840	15,449	15,449	18,046	18,046	18,046
207-4050-5335-10	Senior Service Contracts	Home Delivered Food Services	169,158	170,544	180,418	162,633	162,633	162,633
207-4050-5335-25	Senior Service Contracts	Legal Services	5,753	17,325	18,280	8,051	8,051	8,051
207-4050-5335-30	Senior Service Contracts	Adult Day Care	2,750	0	0	0	0	0
207-4050-5335-40	Senior Service Contracts	Options Counseling	0	18,900	15,388	0	0	0
207-4050-5370-10	Other Health/Welfare Contracts	Home Care Workers	121,471	223,476	187,211	270,000	270,000	270,000
207-4050-5790-55	Transport Costs	Volunteer Reimbursements	16,801	17,899	16,874	19,700	19,700	19,700
207-4050-6290-00	Software Purchases	General	286	0	0	0	0	0
207-4050-6290-10	Software Purchases	Software Updates/Maintenance	500	0	0	0	0	0
207-4050-6295-00	Equipment-Noninventory	General	389	4,025	0	150	150	150
207-4050-6299-00	Other Materials and Supplies	General	1,933	9,900	2,615	2,200	2,200	2,200
207-4050-6400-00	Land and Building Rent	General	42,684	43,200	46,408	46,722	46,722	46,722
207-4050-6450-02	Equipment/Vehicle Rent	Copy Machines	1,360	1,473	1,398	450	450	450
207-4050-6500-00	Interdept Vehicle Expense	General	6,476	7,257	7,027	4,650	4,650	4,650
207-4050-6510-00	Equip/Vehicle Main & Repair	General	1,705	1,841	921	755	755	755
207-4050-6510-02	Equip/Vehicle Main & Repair	Equipment Service Contracts	366	376	452	495	495	495
207-4050-6550-00	Building and Grounds Main	General	0	66,944	0	0	0	0
207-4050-6680-01	Communication	Telephone	10,210	13,463	14,746	13,220	13,220	13,220
207-4050-6720-01	Fire/Liability Insurance	Liability Ins Interdept Charges	2,536	2,426	2,123	5,964	5,964	5,964
207-4050-6800-00	Laundry and Dry Cleaning	General	4,225	4,594	5,304	5,708	5,708	5,708
207-4050-6850-00	License and Permit Fees	General	0	2,140	2,140	2,400	2,400	2,400
207-4050-7300-00	Advertising/Publicity	General	0	2,535	1,960	1,725	1,725	1,725
207-4050-7350-00	Printing	General	595	0	0	0	0	0
207-4050-7400-00	Office Supplies and Expenses	General	2,196	2,570	2,576	3,586	3,586	3,586
207-4050-7410-00	Postage	General	1,542	2,046	1,821	1,396	1,396	1,396

Douglas County, Oregon  
 Health and Social Services Fund  
 Senior Services

Department Detail

			Actual	Actual	Revised	Proposed	Approved	Adopted
			FY 13-14	FY 14-15	Budget	FY 16-17	FY 16-17	FY 16-17
					FY 15-16			
207-4050-7420-01	Duplicating Services	Photos, Photostats, Copying	0	0	0	200	200	200
207-4050-7500-00	Subscriptions & Periodicals	General	0	249	598	550	550	550
207-4050-7550-80	Travel	Mileage Reimbursement	4,170	3,679	4,265	1,163	1,163	1,163
207-4050-7560-00	Conventions, Schools, Seminars	General	4,711	7,469	5,955	3,489	3,489	3,489
207-4050-7560-05	Conventions, Schools, Seminars	Volunteers	0	0	0	100	100	100
207-4050-7580-00	Dues and Memberships	General	3,174	4,642	5,650	6,400	6,400	6,400
207-4050-7800-00	Legal Publication and Printing	General	772	8	0	75	75	75
207-4050-7820-00	Advisory Committee Expense	General	0	182	215	500	500	500
207-4050-7850-00	Pre-employment Training	General	366	394	200	100	100	100
<b>Total Materials &amp; Services</b>			<b>646,351</b>	<b>904,617</b>	<b>910,400</b>	<b>944,095</b>	<b>944,095</b>	<b>944,095</b>
207-4050-8200-99	Furniture and Equipment	Noninventory	0	2,192	0	0	0	0
<b>Total Capital Outlay</b>			<b>0</b>	<b>2,192</b>	<b>0</b>	<b>0</b>	<b>0</b>	<b>0</b>
207-4050-9500-01	Transfers Out	General Fund	50,739	47,274	47,274	47,275	47,275	47,275
207-4050-9899-03	Intrafund Transfers	Community Health	2,140	0	0	0	0	0
207-4050-9899-22	Intrafund Transfers	Accounting	10,976	7,339	0	0	0	0
207-4050-9899-24	Intrafund Transfers	Offices	1,584	4,743	0	0	0	0
207-4050-9899-41	Intrafund Transfers	Information Technology	18,219	4,255	0	0	0	0
207-4050-9899-50	Intrafund Transfers	Department Administration	31,390	5,533	0	0	0	0
<b>Total Other Requirements</b>			<b>115,048</b>	<b>69,144</b>	<b>47,274</b>	<b>47,275</b>	<b>47,275</b>	<b>47,275</b>
<b>Total Expenditures</b>			<b>1,197,576</b>	<b>1,532,528</b>	<b>1,626,928</b>	<b>1,651,306</b>	<b>1,651,306</b>	<b>1,651,306</b>

Douglas County, Oregon  
Health and Social Services Fund  
Senior Services Division

PERSONNEL SERVICES					
	Actual	Actual	Revised	Budget	
	FTE	FTE	Budget	FY 16-17	
	<u>FY 13-14</u>	<u>FY 14-15</u>	<u>FY 15-16</u>	FTE	Amount
Senior Services Director				1.00	54,916
Senior Services Agency on Aging Manager	1.00	1.00	1.00		
Senior Services Case Manager	3.30	5.20	5.70	5.20	194,196
Senior Services Coordinator	1.00	1.00	1.00	1.00	30,070
Food Service Worker	1.30	1.10	1.10	1.10	22,932
Management Analyst 2		1.00	1.00	1.00	56,014
Office Manager 2	0.70				
Department Assistant 2			0.50	0.70	15,084
Total Regular	<u>7.30</u>	<u>9.30</u>	<u>10.30</u>	<u>10.00</u>	<u>373,212</u>
Temporary					25,048
PERS		23.25%, 32.48%			93,598
Social Security		7.65%			30,467
Worker's Compensation		0.75%			2,987
Unemployment		0.90%			3,584
Medical & Dental Insurance		\$1,365/mo			<u>131,040</u>
Total Personnel Services					<u><u>659,936</u></u>