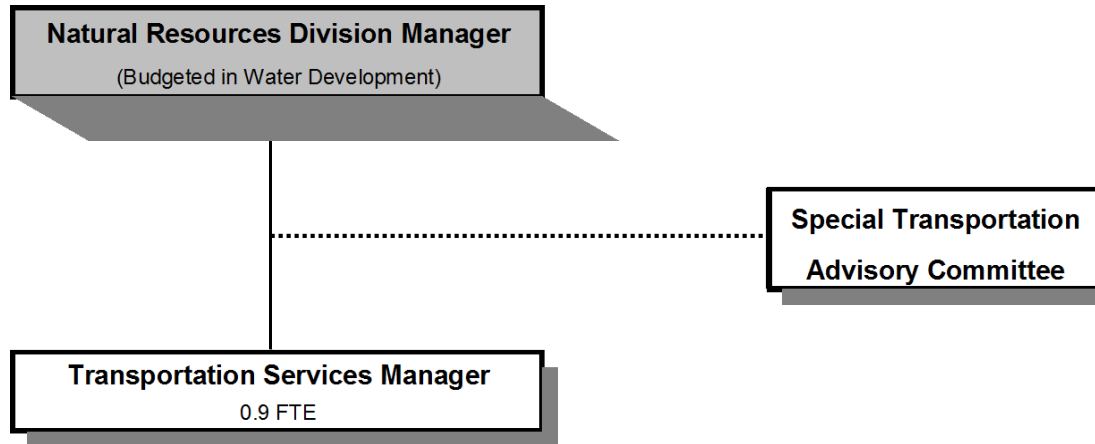


TRANSPORTATION SERVICES



Douglas County, Oregon
 General Fund
 Transportation Services (4060)

	<u>Actual FY 12-13</u>	<u>Actual FY 13-14</u>	<u>Actual FY 14-15</u>	<u>Revised Budget FY 15-16</u>	<u>Proposed FY 16-17</u>	<u>Approved FY 16-17</u>	<u>Adopted FY 16-17</u>
<u>RESOURCES</u>							
Beginning Balance (Use Restricted)				130,000	350,000	350,000	350,000
Intergovernmental Revenues			1,139,268	1,305,896	1,126,080	1,126,080	1,126,080
Charges and Other Revenues			1,625	2,450	2,450	2,450	2,450
Transfers In - Health and Social Services Fund			279,624				
Total Revenue			1,420,517	1,308,346	1,128,530	1,128,530	1,128,530
TOTAL RESOURCES			1,420,517	1,438,346	1,478,530	1,478,530	1,478,530
<u>REQUIREMENTS</u>							
Personnel Services			74,106	76,551	80,543	80,543	80,543
Materials & Services			953,892	1,318,724	1,144,782	1,144,782	1,144,782
Total Expenditures			1,027,998	1,395,275	1,225,325	1,225,325	1,225,325
Ending Balance (Use Restricted)			420,335	70,885	281,019	281,019	281,019
TOTAL REQUIREMENTS			1,448,333	1,466,160	1,506,344	1,506,344	1,506,344
<i>Use of General County Resources</i>			27,816	27,814	27,814	27,814	27,814
Staffing FTE			0.90	0.90	0.90	0.90	0.90

Douglas County, Oregon
 General Fund
 Transportation Services

Department Detail

			Actual	Actual	Revised	Proposed	Approved	Adopted
			FY 13-14	FY 14-15	Budget	FY 16-17	FY 16-17	FY 16-17
					FY 15-16			
100-4060-3250-50	State/Fed-Transportation Dept	Section 5310 Mobility Mgmt		62,988	81,623	81,671	81,671	81,671
100-4060-3250-51	State/Fed-Transportation Dept	Section 5310 Purchased Svcs		346,808	326,763	326,763	326,763	326,763
100-4060-3250-54	State/Fed-Transportation Dept	Section 5311 PM & Rehab		57,941	130,280	67,114	67,114	67,114
100-4060-3250-56	State/Fed-Transportation Dept	Section 5311 Small Cities & Rural		184,223	263,857	263,856	263,856	263,856
100-4060-3250-59	State/Fed-Transportation Dept	Section 5310 Equipment		0	116,698	0	0	0
100-4060-3250-62	State/Fed-Transportation Dept	Section 5311 Admin		154,890	58,324	58,325	58,325	58,325
100-4060-3350-50	State-Transportation Dept	Special Transport Operations		315,225	328,351	328,351	328,351	328,351
100-4060-3350-53	State-Transportation Dept	Special Transport - STO		17,193	0	0	0	0
100-4060-3875-00	Expense Reimbursements	General		1,625	2,450	2,450	2,450	2,450
100-4060-3900-17	Transfers In	Health and Social Services		279,624	0	0	0	0
Total Revenue				1,420,517	1,308,346	1,128,530	1,128,530	1,128,530
100-4060-4000-00	Regular Employees	General		42,892	45,081	47,721	47,721	47,721
100-4060-4030-00	Temporary Employees	General		0	800	1,100	1,100	1,100
100-4060-4500-00	PERS	General		11,103	10,481	11,095	11,095	11,095
100-4060-4510-00	Social Security	General		3,279	3,510	3,735	3,735	3,735
100-4060-4520-00	Workers' Compensation	General		300	161	366	366	366
100-4060-4530-00	Medical and Dental Insurance	General		16,232	16,380	16,380	16,380	16,380
100-4060-4540-00	Unemployment	General		300	138	146	146	146
Total Personnel Services				74,106	76,551	80,543	80,543	80,543
100-4060-5300-00	Health & SS Contracts	General		0	75,000	80,000	80,000	80,000
100-4060-5335-81	Senior Service Contracts	Special Transportation-STO		17,196	0	0	0	0
100-4060-5335-82	Senior Service Contracts	Special Transportation-Provi		155,886	294,418	289,610	289,610	289,610
100-4060-5335-85	Senior Service Contracts	Transportation Providers		27,816	27,814	27,814	27,814	27,814
100-4060-5335-86	Senior Service Contracts	Transportation PM		84,738	130,280	67,114	67,114	67,114
100-4060-5335-87	Senior Service Contracts	Transportation Purchased Svcs		335,180	326,763	326,763	326,763	326,763
100-4060-5335-88	Senior Service Contracts	Transportation 5310 Equip		0	116,648	0	0	0
100-4060-5335-91	Senior Service Contracts	Transportation 5311 Operations		245,632	263,857	263,856	263,856	263,856
100-4060-5335-94	Senior Service Contracts	Trans 5311 Admin		52,720	58,324	58,325	58,325	58,325
100-4060-6290-00	Software Purchases	General		18,000	1,020	1,100	1,100	1,100
100-4060-6290-10	Software Purchases	Software Updates/Maintenance		8,272	12,000	15,500	15,500	15,500
100-4060-6295-00	Equipment-Noninventory	General		740	2,000	2,000	2,000	2,000
100-4060-6299-00	Other Materials and Supplies	General		364	600	600	600	600
100-4060-6450-02	Equipment/Vehicle Rent	Copy Machines		0	30	30	30	30
100-4060-6500-00	Interdept Vehicle Expense	General		190	1,000	1,000	1,000	1,000
100-4060-6510-00	Equip/Vehicle Main & Repair	General		0	100	100	100	100
100-4060-6510-02	Equip/Vehicle Main & Repair	Equipment Service Contracts		0	50	50	50	50

Douglas County, Oregon
 General Fund
 Transportation Services

Department Detail

			Actual	Actual	Revised	Proposed	Approved	Adopted
			FY 13-14	FY 14-15	Budget	FY 16-17	FY 16-17	FY 16-17
					FY 15-16			
100-4060-6680-01	Communication	Telephone		2,392	2,500	4,500	4,500	4,500
100-4060-6720-01	Fire/Liability Insurance	Liability Insurance Interdept Chg		275	100	400	400	400
100-4060-7300-00	Advertising/Publicity	General		2,219	3,000	3,000	3,000	3,000
100-4060-7400-00	Office Supplies and Expenses	General		384	300	300	300	300
100-4060-7410-00	Postage	General		0	20	20	20	20
100-4060-7560-00	Conventions, Schools, Seminars	General		1,098	1,800	1,500	1,500	1,500
100-4060-7580-00	Dues and Memberships	General		790	900	1,000	1,000	1,000
100-4060-7800-00	Legal Publication and Printing	General		0	200	200	200	200
Total Materials and Services				953,892	1,318,724	1,144,782	1,144,782	1,144,782
Total Expenditures				1,027,998	1,395,275	1,225,325	1,225,325	1,225,325

Douglas County, Oregon
 General Fund
 Transportation Services

PERSONNEL SERVICES				
	Actual FTE FY 13-14	Actual FTE FY 14-15	Revised Budget FTE FY 15-16	Budget FY 16-17
				FTE Amount
Transportation Systems Manager		0.90	0.90	0.90 47,721
Temporary				1,100
PERS		23.25%, 32.48%		11,095
Social Security		7.65%		3,735
Worker's Compensation		0.75%		366
Unemployment		0.30%		146
Medical & Dental Insurance		\$1,365/mo		16,380
Total Personnel Services				<u>80,543</u>