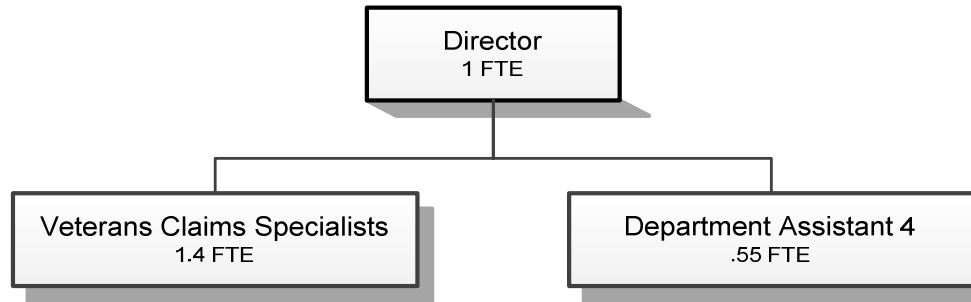


VETERANS SERVICES



Douglas County, Oregon
 Health and Social Services Fund
 Veterans Services (4040)

	Actual FY 11-12	Actual FY 12-13	Actual FY 13-14	Revised Budget FY 14-15	Proposed FY 15-16	Approved FY 15-16	Adopted FY 15-16
<u>RESOURCES</u>							
Beginning Balance (Use Restricted)				50,407			
Intergovernmental Revenues	63,307	68,530	126,375	67,560	67,500	67,500	67,500
Total Resources	63,307	68,530	126,375	117,967	67,500	67,500	67,500
<u>REQUIREMENTS</u>							
Personnel Services	174,347	175,691	182,171	238,947	194,526	194,526	194,526
Materials & Services	14,356	17,111	16,461	19,912	11,734	11,734	11,734
Capital Outlay			3,098				
Transfers Out - General Fund	9,094	12,093	15,612	16,529	16,529	16,529	16,529
Add: Expense Reimbursements to Other Divisions	14,518	(10,087)	(15,238)	(4,068)			
Total Expenditures	212,315	194,808	202,104	271,320	222,789	222,789	222,789
Ending Balance (Use Restricted)			54,526				
TOTAL REQUIREMENTS	212,315	194,808	256,630	271,320	222,789	222,789	222,789
Use of General County Resources	149,008	126,278	130,255	153,353	155,289	155,289	155,289
Staffing FTE	3.00	3.00	3.00	3.00	2.95	2.95	2.95

Douglas County, Oregon
 Health and Social Services Fund
 Veterans Services

Department Detail

			Actual	Actual	Revised	Proposed	Approved	Adopted
			FY 12-13	FY 13-14	Budget	FY 15-16	FY 15-16	FY 15-16
					FY 14-15			
207-4040-3390-00	State-Other Assistance	General	0	60,407	0	0	0	0
207-4040-3390-04	State-Other Assistance	Aid for Veteran Affairs	68,530	65,968	67,560	67,500	67,500	67,500
Total Revenue			68,530	126,375	67,560	67,500	67,500	67,500
207-4040-4000-00	Regular Employees	General	106,735	105,331	108,272	122,087	122,087	122,087
207-4040-4030-00	Temporary Employees	General	2,226	918	31,515	0	0	0
207-4040-4500-00	PERS	General	22,438	27,932	37,368	28,385	28,385	28,385
207-4040-4510-00	Social Security	General	7,705	7,621	10,694	9,340	9,340	9,340
207-4040-4520-00	Workers' Compensation	General	381	383	979	855	855	855
207-4040-4530-00	Medical and Dental Insurance	General	33,794	39,242	49,140	32,760	32,760	32,760
207-4040-4540-00	Unemployment	General	2,412	744	979	1,099	1,099	1,099
Total Personnel Services			175,691	182,171	238,947	194,526	194,526	194,526
207-4040-6290-10	Software Purchases	Software Updates/Maintenance	2,952	1,897	3,000	1,262	1,262	1,262
207-4040-6295-00	Equipment-Noninventory	General	1,608	2,383	1,100	0	0	0
207-4040-6299-00	Other Materials and Supplies	General	485	1,731	850	0	0	0
207-4040-6450-02	Equipment/Vehicle Rent	Copy Machines	524	517	500	220	220	220
207-4040-6500-00	Interdept Vehicle Expense	General	805	793	4,000	850	850	850
207-4040-6510-00	Equip/Vehicle Main & Repair	General	0	13	311	50	50	50
207-4040-6510-02	Equip/Vehicle Main & Repair	Equipment Service Contracts	0	7	311	0	0	0
207-4040-6680-01	Communication	Telephone	394	751	1,000	810	810	810
207-4040-6720-01	Fire/Liability Insurance	Liability Ins Interdept Charges	597	780	848	649	649	649
207-4040-7400-00	Office Supplies and Expenses	General	4,682	2,582	2,342	2,295	2,295	2,295
207-4040-7410-00	Postage	General	2,188	1,788	2,000	600	600	600
207-4040-7500-00	Subscriptions, Books & Periodi	General	25	65	125	50	50	50
207-4040-7550-00	Travel	Mileage Reimbursement	0	83	0	0	0	0
207-4040-7560-00	Conventions, Schools, Seminars	General	2,621	2,009	2,500	4,798	4,798	4,798
207-4040-7580-00	Dues and Memberships	General	210	295	250	150	150	150
207-4040-7800-00	Legal Publication and Printing	General	0	646	740	0	0	0
207-4040-7850-00	Pre-employment Training	General	20	121	35	0	0	0
Total Materials & Services			17,111	16,461	19,912	11,734	11,734	11,734

Douglas County, Oregon
 Health and Social Services Fund
 Veterans Services

Department Detail

			Actual	Actual	Revised	Proposed	Approved	Adopted
			FY 12-13	FY 13-14	Budget	FY 15-16	FY 15-16	FY 15-16
					FY 14-15			
207-4040-8200-99	Furniture and Equipment	Noninventory	0	3,098	0	0	0	0
Total Capital Outlay			0	3,098	0	0	0	0
207-4040-9500-01	Transfers Out	General Fund	12,093	15,612	16,529	16,529	16,529	16,529
207-4040-9899-15	Intrafund Transfers	Administration	(27,003)	(35,340)	(25,683)	0	0	0
207-4040-9899-22	Intrafund Transfers	Accounting	3,495	3,369	4,449	0	0	0
207-4040-9899-24	Intrafund Transfers	Offices	1,599	1,348	1,722	0	0	0
207-4040-9899-41	Intrafund Transfers	Info Tech	4,071	5,588	4,992	0	0	0
207-4040-9899-50	Intrafund Transfers	Dept. Admin	7,751	9,797	10,452	0	0	0
Total Other Requirements			2,006	374	12,461	16,529	16,529	16,529
Total Expenditures			194,808	202,104	271,320	222,789	222,789	222,789

Douglas County, Oregon
 Health and Social Services Fund
 Veterans Services

PERSONNEL SERVICES					
	Actual FTE FY 12-13	Actual FTE FY 13-14	Revised Budget FTE FY 14-15	Budget FY 15-16	
				FTE	Amount
Veterans Service Officer	1.00	1.00	1.00	1.00	56,193
Veterans Claims Specialist	1.00	1.00	1.00	1.40	49,202
Department Assistant 4	1.00	1.00	1.00	0.55	16,692
Total Regular	<u>3.00</u>	<u>3.00</u>	<u>3.00</u>	<u>2.95</u>	<u>122,087</u>
PERS		23.25%, 32.48%			28,385
Social Security		7.65%			9,340
Worker's Compensation		0.70%			855
Unemployment		0.90%			1,099
Medical & Dental Insurance		\$1,365/mo			<u>32,760</u>
Total Personnel Services					<u><u>194,526</u></u>