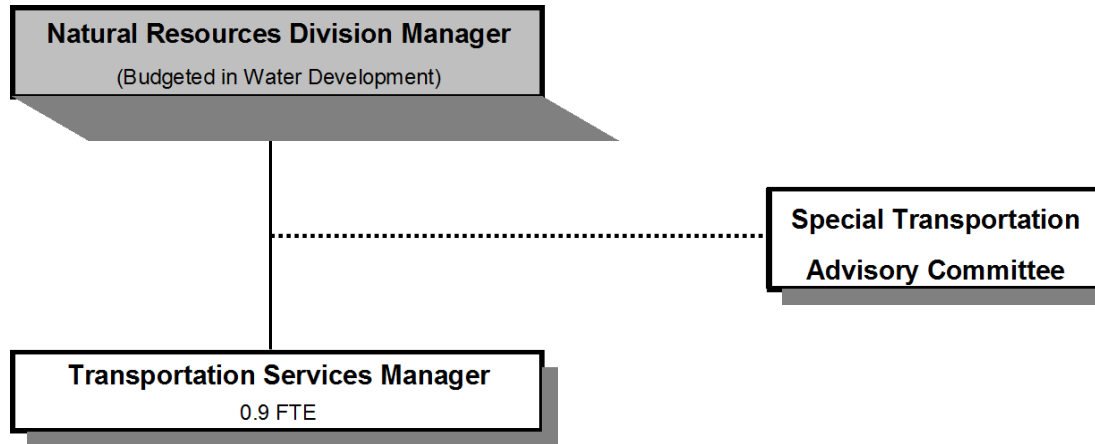


TRANSPORTATION SERVICES



Douglas County, Oregon
 General Fund
 Transportation Services (4060)

| | <u>Actual FY 11-12</u> | <u>Actual FY 12-13</u> | <u>Actual FY 13-14</u> | <u>Revised Budget FY 14-15</u> | <u>Proposed FY 15-16</u> | <u>Approved FY 15-16</u> | <u>Adopted FY 15-16</u> |
|--|----------------------------|----------------------------|----------------------------|--|------------------------------|------------------------------|-----------------------------|
| <u>RESOURCES</u> | | | | | | | |
| Beginning Balance (Use Restricted) | | | | | 130,000 | 130,000 | 130,000 |
| Intergovernmental Revenues | | | | 1,012,783 | 1,305,896 | 1,305,896 | 1,305,896 |
| Charges and Other Revenues | | | | 2,450 | 2,450 | 2,450 | 2,450 |
| Transfers In - Health and Social Services Fund | | | | 279,624 | | | |
| Total Revenue | | | | 1,294,857 | 1,308,346 | 1,308,346 | 1,308,346 |
| TOTAL RESOURCES | | | | 1,294,857 | 1,438,346 | 1,438,346 | 1,438,346 |
| <u>REQUIREMENTS</u> | | | | | | | |
| Personnel Services | | | | 104,671 | 76,551 | 76,551 | 76,551 |
| Materials & Services | | | | 1,113,032 | 1,318,724 | 1,318,724 | 1,318,724 |
| Total Expenditures | | | | 1,217,703 | 1,395,275 | 1,395,275 | 1,395,275 |
| Ending Balance (Use Restricted) | | | | 94,624 | 70,885 | 70,885 | 70,885 |
| TOTAL REQUIREMENTS | | | | 1,217,703 | 1,395,275 | 1,395,275 | 1,395,275 |
| <i>Use of General County Resources</i> | | | | 17,470 | 27,814 | 27,814 | 27,814 |
| Staffing FTE | | | | 0.90 | 0.90 | 0.90 | 0.90 |

Douglas County, Oregon
 General Fund
 Transportation Services

Department Detail

| | | | Actual | Actual | Revised | Proposed | Approved | Adopted |
|---------------------------------|-------------------------------|-----------------------------------|----------|----------|------------------|------------------|------------------|------------------|
| | | | FY 12-13 | FY 13-14 | Budget | FY 15-16 | FY 15-16 | FY 15-16 |
| | | | | | FY 14-15 | | | |
| 100-4060-3250-50 | State/Fed-Transportation Dept | Section 5310 Mobility Mgmt | | | 66,988 | 81,623 | 81,623 | 81,623 |
| 100-4060-3250-51 | State/Fed-Transportation Dept | Section 5310 Purchased Svcs | | | 345,973 | 326,763 | 326,763 | 326,763 |
| 100-4060-3250-54 | State/Fed-Transportation Dept | Section 5311 PM & Rehab | | | 0 | 130,280 | 130,280 | 130,280 |
| 100-4060-3250-56 | State/Fed-Transportation Dept | Section 5311 Small Cities & Rural | | | 354,513 | 263,857 | 263,857 | 263,857 |
| 100-4060-3250-59 | State/Fed-Transportation Dept | Section 5310 Equipment | | | 0 | 116,698 | 116,698 | 116,698 |
| 100-4060-3250-62 | State/Fed-Transportation Dept | Section 5311 Admin | | | 0 | 58,324 | 58,324 | 58,324 |
| 100-4060-3350-50 | State-Transportation Dept | Special Transport Operations | | | 228,116 | 328,351 | 328,351 | 328,351 |
| 100-4060-3350-53 | State-Transportation Dept | Special Transport - STO | | | 17,193 | 0 | 0 | 0 |
| 100-4060-3875-00 | Expense Reimbursements | General | | | 2,450 | 2,450 | 2,450 | 2,450 |
| 100-4060-3900-17 | Transfers In | Health and Social Services | | | 279,624 | 0 | 0 | 0 |
| Total Revenue | | | | | 1,294,857 | 1,308,346 | 1,308,346 | 1,308,346 |
| 100-4060-4000-00 | Regular Employees | General | | | 42,768 | 45,081 | 45,081 | 45,081 |
| 100-4060-4030-00 | Temporary Employees | General | | | 18,060 | 800 | 800 | 800 |
| 100-4060-4500-00 | PERS | General | | | 16,225 | 10,481 | 10,481 | 10,481 |
| 100-4060-4510-00 | Social Security | General | | | 4,653 | 3,510 | 3,510 | 3,510 |
| 100-4060-4520-00 | Workers' Compensation | General | | | 426 | 161 | 161 | 161 |
| 100-4060-4530-00 | Medical and Dental Insurance | General | | | 22,113 | 16,380 | 16,380 | 16,380 |
| 100-4060-4540-00 | Unemployment | General | | | 426 | 138 | 138 | 138 |
| Total Personnel Services | | | | | 104,671 | 76,551 | 76,551 | 76,551 |
| 100-4060-5300-00 | Health & SS Contracts | General | | | 97,768 | 75,000 | 75,000 | 75,000 |
| 100-4060-5335-81 | Senior Service Contracts | Special Transportation-STO | | | 17,193 | 0 | 0 | 0 |
| 100-4060-5335-82 | Senior Service Contracts | Special Transportation-Provi | | | 228,116 | 294,418 | 294,418 | 294,418 |
| 100-4060-5335-85 | Senior Service Contracts | Transportation Providers | | | 27,814 | 27,814 | 27,814 | 27,814 |
| 100-4060-5335-86 | Senior Service Contracts | Transportation PM | | | 0 | 130,280 | 130,280 | 130,280 |
| 100-4060-5335-87 | Senior Service Contracts | Transportation Purchased Svcs | | | 345,973 | 326,763 | 326,763 | 326,763 |
| 100-4060-5335-88 | Senior Service Contracts | Transportation 5310 Equip | | | 0 | 116,648 | 116,648 | 116,648 |
| 100-4060-5335-91 | Senior Service Contracts | Transportation 5311 Operations | | | 354,513 | 263,857 | 263,857 | 263,857 |
| 100-4060-5335-94 | Senior Service Contracts | Trans 5311 Admin | | | 0 | 58,324 | 58,324 | 58,324 |
| 100-4060-6290-00 | Software Purchases | General | | | 21,000 | 1,020 | 1,020 | 1,020 |
| 100-4060-6290-10 | Software Purchases | Software Updates/Maintenance | | | 8,030 | 12,000 | 12,000 | 12,000 |
| 100-4060-6295-00 | Equipment-Noninventory | General | | | 2,000 | 2,000 | 2,000 | 2,000 |
| 100-4060-6299-00 | Other Materials and Supplies | General | | | 600 | 600 | 600 | 600 |
| 100-4060-6450-02 | Equipment/Vehicle Rent | Copy Machines | | | 30 | 30 | 30 | 30 |
| 100-4060-6500-00 | Interdept Vehicle Expense | General | | | 1,000 | 1,000 | 1,000 | 1,000 |
| 100-4060-6510-00 | Equip/Vehicle Main & Repair | General | | | 100 | 100 | 100 | 100 |
| 100-4060-6510-02 | Equip/Vehicle Main & Repair | Equipment Service Contracts | | | 50 | 50 | 50 | 50 |

Douglas County, Oregon
 General Fund
 Transportation Services

Department Detail

| | | | Actual | Actual | Revised | Proposed | Approved | Adopted |
|-------------------------------------|--------------------------------|-----------------------------------|----------|----------|------------------|------------------|------------------|------------------|
| | | | FY 12-13 | FY 13-14 | Budget | FY 15-16 | FY 15-16 | FY 15-16 |
| | | | | | FY 14-15 | | | |
| 100-4060-6680-01 | Communication | Telephone | | | 2,500 | 2,500 | 2,500 | 2,500 |
| 100-4060-6720-01 | Fire/Liability Insurance | Liability Insurance Interdept Chg | | | 275 | 100 | 100 | 100 |
| 100-4060-7300-00 | Advertising/Publicity | General | | | 3,000 | 3,000 | 3,000 | 3,000 |
| 100-4060-7400-00 | Office Supplies and Expenses | General | | | 300 | 300 | 300 | 300 |
| 100-4060-7410-00 | Postage | General | | | 20 | 20 | 20 | 20 |
| 100-4060-7560-00 | Conventions, Schools, Seminars | General | | | 1,800 | 1,800 | 1,800 | 1,800 |
| 100-4060-7580-00 | Dues and Memberships | General | | | 750 | 900 | 900 | 900 |
| 100-4060-7800-00 | Legal Publication and Printing | General | | | 200 | 200 | 200 | 200 |
| Total Materials and Services | | | | | 1,113,032 | 1,318,724 | 1,318,724 | 1,318,724 |
| Total Expenditures | | | | | 1,217,703 | 1,395,275 | 1,395,275 | 1,395,275 |

Douglas County, Oregon
 General Fund
 Transportation Services

| PERSONNEL SERVICES | | | | |
|--------------------------------|----------|----------------|----------|------------------|
| | Actual | Actual | Revised | Budget |
| | FTE | FTE | Budget | FY 15-16 |
| | FY 12-13 | FY 13-14 | FY 14-15 | FTE Amount |
| Transportation Systems Manager | | | 0.90 | 0.90 45,081 |
| Temporary | | | | 800 |
| PERS | | 23.25%, 32.48% | | 10,481 |
| Social Security | | 7.65% | | 3,510 |
| Worker's Compensation | | 0.35% | | 161 |
| Unemployment | | 0.30% | | 138 |
| Medical & Dental Insurance | | \$1,365/mo | | 16,380 |
| Total Personnel Services | | | | <u>76,551</u> |