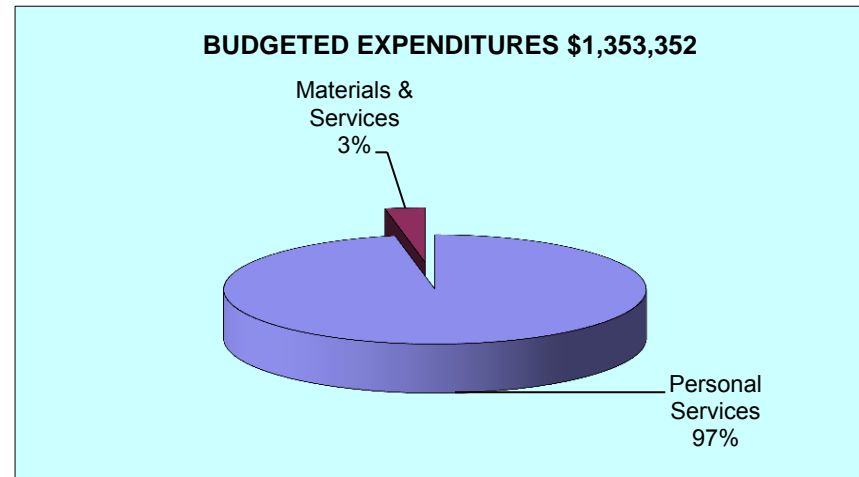
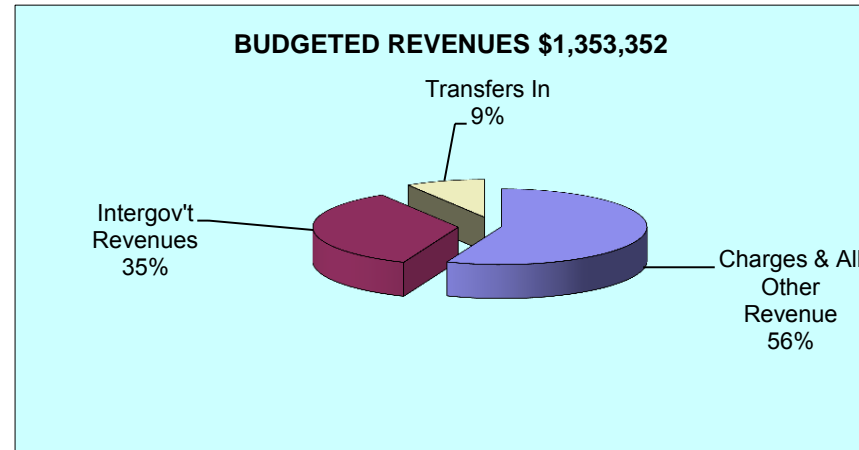
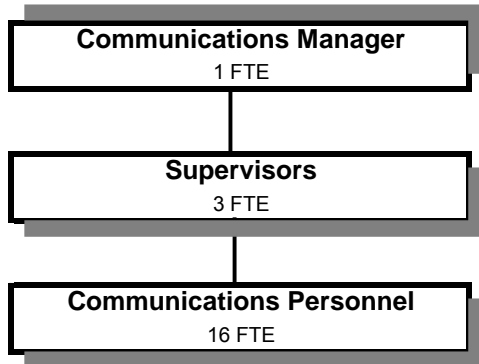


COMMUNICATIONS 911 & DISPATCH



Douglas County, Oregon
Public Safety Fund
Communications 911 and Dispatch (1800)

	Actual FY 10-11	Actual FY 11-12	Actual FY 12-13	Revised Budget FY 13-14	Proposed FY 14-15	Approved FY 14-15	Adopted FY 14-15
<u>RESOURCES</u>							
Beginning Balance	70,983	35,596	10,822				
Revenues:							
Charges and Other Revenues	847,660	865,773	864,692	757,500	759,352	759,352	759,352
Intergovernmental Revenues	315,991	316,165	521,043	475,000	475,000	475,000	475,000
Transfers In - General Fund		60,000		165,000	119,000	119,000	119,000
Transfers In - Public Works	269,900	159,851					
Total Revenue	<u>1,433,551</u>	<u>1,401,789</u>	<u>1,385,735</u>	<u>1,397,500</u>	<u>1,353,352</u>	<u>1,353,352</u>	<u>1,353,352</u>
TOTAL RESOURCES	1,504,534	1,437,385	1,396,557	1,397,500	1,353,352	1,353,352	1,353,352
<u>REQUIREMENTS</u>							
Personnel Services	1,662,975	1,739,786	1,822,460	1,943,716	1,899,530	1,899,530	1,899,530
Materials & Services	78,568	48,435	50,780	59,350	59,950	59,950	59,950
Capital Outlay		4,763					
	<u>1,741,543</u>	<u>1,792,984</u>	<u>1,873,240</u>	<u>2,003,066</u>	<u>1,959,480</u>	<u>1,959,480</u>	<u>1,959,480</u>
Less: Reimbursement from Enforcement	<u>(355,748)</u>	<u>(366,421)</u>	<u>(681,463)</u>	<u>(605,566)</u>	<u>(606,128)</u>	<u>(606,128)</u>	<u>(606,128)</u>
Total Expenditures	<u>1,385,795</u>	<u>1,426,563</u>	<u>1,191,777</u>	<u>1,397,500</u>	<u>1,353,352</u>	<u>1,353,352</u>	<u>1,353,352</u>
Less: Radio System use of Revenues	<u>(83,143)</u>						
Ending Balance	<u>35,596</u>	<u>10,822</u>	<u>204,780</u>				
TOTAL REQUIREMENTS	1,338,248	1,437,385	1,396,557	1,397,500	1,353,352	1,353,352	1,353,352
Staffing FTE	20.00	20.00	20.00	20.00	20.00	20.00	20.00

-Radio System combined with Communications 911 & Dispatch FY11-12 and prior, separated FY12-13.

Douglas County, Oregon
 Public Safety Fund
 Communications 911 and Dispatch

Department Detail

			Actual	Actual	Revised	Proposed	Approved	Adopted
			FY 11-12	FY 12-13	Budget	FY 14-15	FY 14-15	FY 14-15
					FY 13-14			
220-1800-2380-00	Communications Contracts	General	862,072	862,296	755,000	756,852	756,852	756,852
220-1800-3450-06	Shared Revenues	911 Revenues	316,165	521,043	475,000	475,000	475,000	475,000
220-1800-3800-01	Interest	General Investments	71	0	0	0	0	0
220-1800-3879-00	Miscellaneous	General	3,630	2,396	2,500	2,500	2,500	2,500
220-1800-3900-01	Transfers In	General Fund	60,000	0	165,000	119,000	119,000	119,000
220-1800-3900-11	Transfers In	Public Works	159,851	0	0	0	0	0
Total Revenue			1,401,789	1,385,735	1,397,500	1,353,352	1,353,352	1,353,352
220-1800-4000-00	Regular Employees	General	982,331	1,014,434	1,050,285	1,045,322	1,045,322	1,045,322
220-1800-4050-00	Overtime	General	92,951	99,560	95,000	95,000	95,000	95,000
220-1800-4500-00	PERS	General	267,861	285,603	364,939	313,136	313,136	313,136
220-1800-4510-00	Social Security	General	79,619	82,189	87,614	87,235	87,235	87,235
220-1800-4520-00	Workers' Compensation	General	3,764	3,899	4,008	3,991	3,991	3,991
220-1800-4530-00	Medical and Dental Insurance	General	292,339	317,596	336,144	353,136	353,136	353,136
220-1800-4540-00	Unemployment	General	20,921	19,179	5,726	1,710	1,710	1,710
Total Personnel Services			1,739,786	1,822,460	1,943,716	1,899,530	1,899,530	1,899,530
220-1800-5000-00	Legal Services	General	0	0	1,500	1,500	1,500	1,500
220-1800-6290-00	Software Purchases	General	108	134	1,500	1,500	1,500	1,500
220-1800-6295-00	Equipment-Noninventory	General	2,244	7,772	7,500	7,500	7,500	7,500
220-1800-6460-00	Software Rental	General	22,499	22,580	22,000	22,000	22,000	22,000
220-1800-6500-00	Interdept Vehicle Expense	General	1,126	672	2,000	2,000	2,000	2,000
220-1800-6510-02	Equip/Vehicle Main & Repair	Equip Service Contracts	936	686	5,000	5,000	5,000	5,000
220-1800-6680-01	Communication	Telephone	1,636	660	3,000	3,000	3,000	3,000
220-1800-6685-01	Utilities	Electric	55	0	0	0	0	0
220-1800-6720-01	Fire/Liability Insurance	Liability Ins Charges	14,250	14,250	5,400	6,000	6,000	6,000
220-1800-7400-00	Office Supplies and Expenses	General	2,610	1,475	2,500	2,500	2,500	2,500
220-1800-7410-00	Postage	General	295	137	300	300	300	300
220-1800-7550-00	Travel	General	0	0	2,000	2,000	2,000	2,000
220-1800-7560-00	Conventions, Schools, Seminars	General	923	973	4,000	4,000	4,000	4,000

Douglas County, Oregon
 Public Safety Fund
 Communications 911 and Dispatch

Department Detail

			Actual	Actual	Revised	Proposed	Approved	Adopted
			FY 11-12	FY 12-13	Budget	FY 14-15	FY 14-15	FY 14-15
					FY 13-14			
220-1800-7580-00	Dues and Memberships	General	120	120	150	150	150	150
220-1800-7850-00	Pre-employment Testing	General	1,633	1,321	2,500	2,500	2,500	2,500
Total Materials and Services			48,435	50,780	59,350	59,950	59,950	59,950
220-1800-8200-99	Furniture and Equipment	Noninventory	4,763	0	0	0	0	0
Total Capital Outlay			4,763	0	0	0	0	0
Total Expenditures before Intrafund Transfers			1,792,984	1,873,240	2,003,066	1,959,480	1,959,480	1,959,480
220-1800-9899-80	Intrafund Transfers	Sheriff Enforcement	(366,421)	(681,463)	(605,566)	(606,128)	(606,128)	(606,128)
Total Expenditures			1,426,563	1,191,777	1,397,500	1,353,352	1,353,352	1,353,352

Douglas County, Oregon
Public Safety Fund
Communications 911 and Dispatch

PERSONNEL SERVICES					
	Actual	Actual	Revised	Budget	
	FTE	FTE	FTE	FY 14-15	
	<u>FY 11-12</u>	<u>FY 12-13</u>	<u>FY 13-14</u>	<u>FTE</u>	<u>Amount</u>
Communication Supervisor-Basic	3.00	3.00	3.00	3.00	187,416
Communications Officer-Basic	16.00	16.00	16.00	16.00	779,885
Sergeant	1.00	1.00	1.00	1.00	78,021
Total Regular	<u>20.00</u>	<u>20.00</u>	<u>20.00</u>	<u>20.00</u>	<u>1,045,322</u>
Overtime					95,000
PERS		25.96%, 28.36%			313,136
Social Security		7.65%			87,235
Worker's Compensation		0.35%			3,991
Unemployment		0.15%			1,710
Medical & Dental Insurance		Varied			353,136
Total Personnel Services					<u>1,899,530</u>