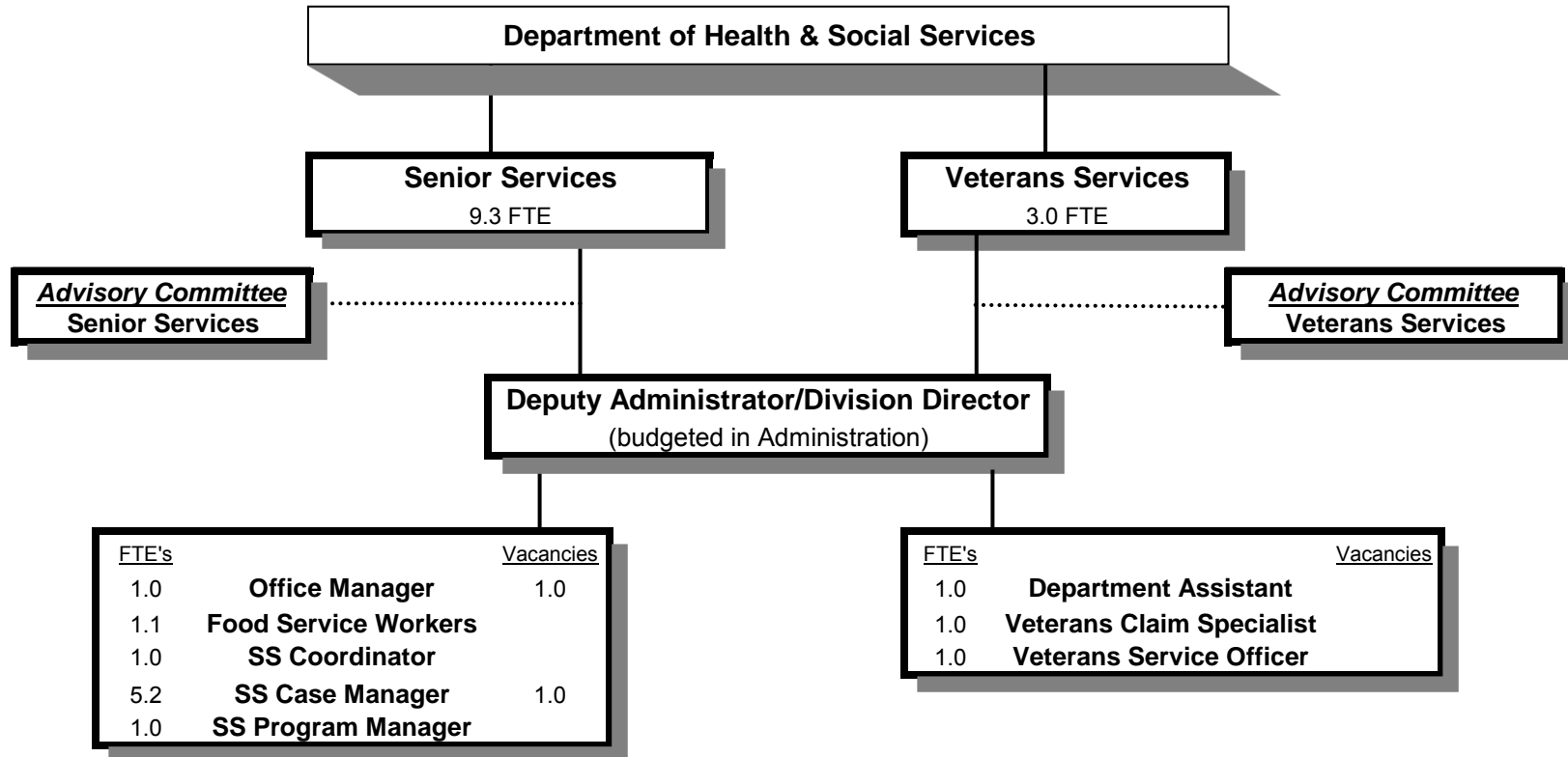


SENIOR AND VETERANS SERVICES DIVISIONS



SIGNIFICANT CHANGES IN THE SENIOR and VETERANS SERVICES PROGRAMS

-Veteran Services received two outreach grants to improve connections of Veterans to services
-Senior Services has implemented the Aging and Disability Resource Connection (ADRC) Program
-Senior Services has received multiple grants to improve services through the ADRC

Douglas County, Oregon
Health and Social Services Fund
Senior (4050) and Veterans (4040) Services Division

	Actual FY 10-11	Actual FY 11-12	Actual FY 12-13	Revised Budget FY 13-14	Proposed FY 14-15	Approved FY 14-15	Adopted FY 14-15
<u>RESOURCES</u>							
Beginning Balance (Use Restricted)					50,407	50,407	50,407
Intergovernmental Revenues		829,566	893,922	1,471,184	1,613,800	1,613,800	1,613,800
Charges and Other Revenues		76,623	83,962	71,175	78,625	78,625	78,625
Interest		718					
Total Revenue		906,907	977,884	1,542,359	1,692,425	1,692,425	1,692,425
TOTAL RESOURCES		906,907	977,884	1,542,359	1,742,832	1,742,832	1,742,832
<u>REQUIREMENTS</u>							
Personnel Services		536,606	541,423	710,184	841,895	841,895	841,895
Materials & Services		562,907	645,582	1,066,011	1,134,221	1,134,221	1,134,221
Transfers Out - General Fund		58,222	49,662	66,726	63,803	63,803	63,803
Add: Expense Reimbursements to Other Divisions		65,453	56,276	30,123	56,695	56,695	56,695
Total Expenditures		1,223,188	1,292,943	1,873,044	2,096,614	2,096,614	2,096,614
TOTAL REQUIREMENTS		1,223,188	1,292,943	1,873,044	2,096,614	2,096,614	2,096,614
Use of General County Resources		316,281	315,059	330,685	353,782	353,782	353,782
Staffing FTE		10.30	10.30	12.70	12.30	12.30	12.30

Douglas County, Oregon
 Health and Social Services Fund
 Senior and Veterans Services

Department Detail

			Actual	Actual	Revised	Proposed	Approved	Adopted
			FY 11-12	FY 12-13	Budget	FY 14-15	FY 14-15	FY 14-15
					FY 13-14			
207-4040-3390-00	State-Other Assistance	General	0	0	60,407	0	0	0
207-4040-3390-04	State-Other Assistance	Aid for Veteran Affairs	63,301	68,530	67,560	67,560	67,560	67,560
207-4040-3800-01	Interest	General Investments	6	0	0	0	0	0
207-4050-2680-01	Senior Services Program Rev	Congregate Meals	65,200	65,515	57,875	57,125	57,125	57,125
207-4050-2680-02	Senior Services Program Rev	Home Delivered Meals	10,043	12,554	13,000	8,500	8,500	8,500
207-4050-2680-10	Senior Services Program Rev	Home Care	596	5,458	0	13,000	13,000	13,000
207-4050-3190-01	Fed-Other Assistance	Retired Sr Volunteer Program	2,655	0	0	0	0	0
207-4050-3210-01	State/Fed-Sr/Disabled Div	SSD Title 19 Reimbursement	39,761	58,500	92,309	107,427	107,427	107,427
207-4050-3210-03	State/Fed-Sr/Disabled Div	OAA IIIB Social Services	174,987	164,041	176,892	162,982	162,982	162,982
207-4050-3210-04	State/Fed-Sr/Disabled Div	OAA IIIC1 Congregate Meals	197,659	168,894	200,631	189,830	189,830	189,830
207-4050-3210-05	State/Fed-Sr/Disabled Div	OAA IIIC2 Home Delivered Meals	100,550	124,826	101,341	100,322	100,322	100,322
207-4050-3210-06	State/Fed-Sr/Disabled Div	USDA Cash-in-Lieu	64,912	83,306	72,153	63,448	63,448	63,448
207-4050-3210-07	State/Fed-Sr/Disabled Div	OAA IIID In-Home Service	1,485	6,125	9,850	8,577	8,577	8,577
207-4050-3210-15	State/Fed-Sr/Disabled Div	OAA IIIE Family Caregiver	72,080	51,612	74,168	78,055	78,055	78,055
207-4050-3210-20	State/Fed-Sr/Disabled Div	VII B Elder Abuse Prevention	924	4,427	2,765	4,452	4,452	4,452
207-4050-3220-10	State/Fed-Adult/Family Ser Div	Title 19-Home Delivered Meals	5,619	210	0	0	0	0
207-4050-3310-00	State-Sr/Disabled Div	General	3,570	7,142	14,397	1,786	1,786	1,786
207-4050-3310-01	State-Sr/Disabled Div	Oregon Project Independence	39,992	67,567	119,742	233,227	233,227	233,227
207-4050-3310-02	State-Sr/Disabled Div	OPI Home Care Worker	52,071	78,742	279,400	349,840	349,840	349,840
207-4050-3310-04	State-Sr/Disabled Div	ADRC Gatekeeper	0	0	67,361	59,322	59,322	59,322
207-4050-3310-05	State-Sr/Disabled Div	ADRC Options Counseling	0	0	56,708	56,708	56,708	56,708
207-4050-3310-06	State-Sr/Disabled Div	ADRC Mental Health	0	0	0	75,506	75,506	75,506
207-4050-3395-00	Local Assistance	General	10,000	10,000	75,500	54,758	54,758	54,758
207-4050-3800-01	Interest	General Investments	712	0	0	0	0	0
207-4050-3840-XX	Contributions and Donations	All	535	215	300	0	0	0
207-4050-3875-00	Expense Reimbursements	General	249	220	0	0	0	0
Total Revenue			906,907	977,884	1,542,359	1,692,425	1,692,425	1,692,425
207-4040-4000-00	Regular Employees	General	101,502	106,735	111,732	108,272	108,272	108,272
207-4040-4030-00	Temporary Employees	General	841	2,226	39,002	31,515	31,515	31,515
207-4040-4050-00	Overtime	General	18	0	0	0	0	0
207-4040-4500-00	PERS	General	24,866	22,438	45,261	37,368	37,368	37,368
207-4040-4510-00	Social Security	General	7,243	7,705	11,532	10,694	10,694	10,694
207-4040-4520-00	Workers' Compensation	General	358	381	528	979	979	979

Douglas County, Oregon
 Health and Social Services Fund
 Senior and Veterans Services

Department Detail

			Actual	Actual	Revised	Proposed	Approved	Adopted
			FY 11-12	FY 12-13	Budget	FY 14-15	FY 14-15	FY 14-15
					FY 13-14			
207-4040-4520-01	Workers' Compensation	Workers Comp Claims	315	0	0	0	0	0
207-4040-4530-00	Medical and Dental Insurance	General	36,901	33,794	38,916	49,140	49,140	49,140
207-4040-4540-00	Unemployment	General	2,303	2,413	1,055	979	979	979
207-4050-4000-00	Regular Employees	General	184,250	181,804	239,872	286,256	286,256	286,256
207-4050-4030-00	Temporary Employees	General	41,726	55,691	53,500	62,523	62,523	62,523
207-4050-4050-00	Overtime	General	0	75	0	0	0	0
207-4050-4500-00	PERS	General	51,239	51,246	80,590	88,275	88,275	88,275
207-4050-4510-00	Social Security	General	16,751	17,688	22,443	26,682	26,682	26,682
207-4050-4520-00	Workers' Compensation	General	790	832	1,027	2,441	2,441	2,441
207-4050-4520-01	Workers' Compensation	Workers Comp Claims	224	0	0	0	0	0
207-4050-4530-00	Medical and Dental Insurance	General	62,195	53,131	62,672	134,330	134,330	134,330
207-4050-4540-00	Unemployment	General	5,084	5,264	2,054	2,441	2,441	2,441
Total Personnel Services			536,606	541,423	710,184	841,895	841,895	841,895
207-4040-5099-00	Other Professional Services	General	542	0	0	0	0	0
207-4040-6290-00	Software Purchases	General	332	0	0	0	0	0
207-4040-6290-10	Software Purchases	Software Updates/Maintenance	1,954	2,952	1,555	3,000	3,000	3,000
207-4040-6295-00	Equipment-Noninventory	General	1,080	1,608	1,100	1,100	1,100	1,100
207-4040-6299-00	Other Materials and Supplies	General	433	485	879	850	850	850
207-4040-6450-02	Equipment/Vehicle Rent	Copy Machines	411	524	425	500	500	500
207-4040-6500-00	Interdept Vehicle Expense	General	709	805	5,022	4,000	4,000	4,000
207-4040-6510-00	Equip/Vehicle Main & Repair	General	0	0	0	311	311	311
207-4040-6510-02	Equip/Vehicle Main & Repair	Equipment Service Contracts	0	0	0	311	311	311
207-4040-6680-01	Communication	Telephone	540	394	1,050	1,000	1,000	1,000
207-4040-6720-01	Fire/Liability Insurance	Liability Ins Interdept Charges	750	597	848	848	848	848
207-4040-7400-00	Office Supplies and Expenses	General	3,285	4,682	2,610	2,342	2,342	2,342
207-4040-7410-00	Postage	General	2,181	2,188	2,000	2,000	2,000	2,000
207-4040-7500-00	Subscriptions, Books & Periodi	General	150	25	165	125	125	125
207-4040-7560-00	Conventions, Schools, Seminars	General	1,766	2,621	1,800	2,500	2,500	2,500
207-4040-7580-00	Dues and Memberships	General	165	210	165	250	250	250
207-4040-7800-00	Legal Publication and Printing	General	60	0	860	740	740	740
207-4040-7850-00	Pre-employment Training	General	0	20	35	35	35	35
207-4050-5099-00	Other Professional Services	General	0	6,425	160,771	93,562	93,562	93,562
207-4050-5300-00	Mental Health Contracts	General	0	0	20,432	112,501	112,501	112,501

Douglas County, Oregon
 Health and Social Services Fund
 Senior and Veterans Services

Department Detail

			Actual	Actual	Revised	Proposed	Approved	Adopted
			FY 11-12	FY 12-13	Budget	FY 14-15	FY 14-15	FY 14-15
					FY 13-14			
207-4050-5335-05	Senior Service Contracts	Food Services Contracts	212,800	211,626	247,075	247,444	247,444	247,444
207-4050-5335-07	Senior Service Contracts	Other Agency Food Service	10,815	10,815	14,840	15,449	15,449	15,449
207-4050-5335-10	Senior Service Contracts	Home Delivered Food Services	166,058	163,304	145,882	156,545	156,545	156,545
207-4050-5335-25	Senior Service Contracts	Legal Services	5,039	5,039	8,280	12,732	12,732	12,732
207-4050-5335-30	Senior Service Contracts	Adult Day Care	0	0	24,245	17,000	17,000	17,000
207-4050-5370-10	Other Health/Welfare Contracts	Home Care Workers	52,071	78,742	279,400	349,840	349,840	349,840
207-4050-5790-55	Transport Costs	Volunteer Reimbursements	13,241	18,241	18,552	14,000	14,000	14,000
207-4050-6220-02	Household Expenses	Kitchen	0	131	100	50	50	50
207-4050-6290-00	Software Purchases	General	0	0	125	0	0	0
207-4050-6295-00	Equipment-Noninventory	General	65	9,206	1,912	0	0	0
207-4050-6299-00	Other Materials and Supplies	General	3,016	14,908	23,703	3,565	3,565	3,565
207-4050-6400-00	Land and Building Rent	General	41,412	41,700	42,684	43,537	43,537	43,537
207-4050-6450-02	Equipment/Vehicle Rent	Copy Machines	1,606	1,253	1,144	1,222	1,222	1,222
207-4050-6500-00	Interdept Vehicle Expense	General	4,848	4,951	7,743	5,550	5,550	5,550
207-4050-6510-00	Equip/Vehicle Main & Repair	General	552	1,851	800	755	755	755
207-4050-6510-02	Equip/Vehicle Main & Repair	Equipment Service Contracts	147	247	275	405	405	405
207-4050-6680-01	Communication	Telephone	7,947	8,874	12,993	8,820	8,820	8,820
207-4050-6720-01	Fire/Liability Insurance	Liability Ins Interdept Charges	3,444	1,856	2,482	2,426	2,426	2,426
207-4050-6800-00	Laundry and Dry Cleaning	General	3,764	4,105	3,800	3,600	3,600	3,600
207-4050-6850-00	License and Permit Fees	General	3	0	2,140	0	0	0
207-4050-7300-00	Advertising/Publicity	General	0	3,900	7,500	500	500	500
207-4050-7400-00	Office Supplies and Expenses	General	2,764	3,825	2,658	1,950	1,950	1,950
207-4050-7410-00	Postage	General	2,054	1,366	1,125	1,275	1,275	1,275
207-4050-7500-00	Subscriptions & Periodicals	General	0	8,943	0	0	0	0
207-4050-7550-00	Travel	General	0	0	25	0	0	0
207-4050-7550-80	Travel	Mileage Reimbursement	9,425	8,844	4,027	3,825	3,825	3,825
207-4050-7560-00	Conventions, Schools, Seminars	General	1,890	11,100	6,509	11,056	11,056	11,056
207-4050-7580-00	Dues and Memberships	General	5,094	5,949	5,800	6,425	6,425	6,425
207-4050-7800-00	Legal Publication and Printing	General	122	719	375	75	75	75
207-4050-7820-00	Advisory Committee Expense	General	0	85	100	0	0	0
207-4050-7850-00	Pre-employment Training	General	372	466	0	200	200	200
Total Materials & Services			562,907	645,582	1,066,011	1,134,221	1,134,221	1,134,221
207-4040-9500-01	Transfers Out	General Fund	9,094	12,093	16,985	16,529	16,529	16,529

Douglas County, Oregon
 Health and Social Services Fund
 Senior and Veterans Services

Department Detail

			Actual	Actual	Revised	Proposed	Approved	Adopted
			FY 11-12	FY 12-13	Budget	FY 14-15	FY 14-15	FY 14-15
					FY 13-14			
207-4040-9899-15	Intrafund Transfers	Administration	0	(27,003)	(45,553)	(25,683)	(25,683)	(25,683)
207-4040-9899-22	Intrafund Transfers	Accounting	3,563	3,495	4,311	4,449	4,449	4,449
207-4040-9899-24	Intrafund Transfers	Offices	0	1,599	1,764	1,722	1,722	1,722
207-4040-9899-41	Intrafund Transfers	Info Tech	2,358	4,071	2,690	4,992	4,992	4,992
207-4040-9899-50	Intrafund Transfers	Dept. Admin	8,597	7,752	11,486	10,452	10,452	10,452
207-4050-9500-01	Transfers Out	General Fund	49,128	37,569	49,741	47,274	47,274	47,274
207-4050-9899-03	Intrafund Transfers	Public Health	2,140	2,140	0	2,140	2,140	2,140
207-4050-9899-04	Intrafund Transfers	Senior Services	0	(2)	0	0	0	0
207-4050-9899-15	Intrafund Transfers	Administration	0	18,489	0	0	0	0
207-4050-9899-22	Intrafund Transfers	Accounting	10,462	10,204	12,627	12,724	12,724	12,724
207-4050-9899-24	Intrafund Transfers	Offices	5,634	1,053	1,283	1,729	1,729	1,729
207-4050-9899-30	Intrafund Transfers	Facilities	531	0	0	0	0	0
207-4050-9899-41	Intrafund Transfers	Info Tech	6,923	11,699	7,878	14,277	14,277	14,277
207-4050-9899-50	Intrafund Transfers	Dept. Admin	25,245	22,779	33,637	29,893	29,893	29,893
Total Other Requirements			123,675	105,938	96,849	120,498	120,498	120,498
Total Expenditures			1,223,188	1,292,943	1,873,044	2,096,614	2,096,614	2,096,614

Douglas County, Oregon
Health and Social Services Fund
Senior and Veterans Services Division

PERSONNEL SERVICES

	Actual FTE FY 11-12	Actual FTE FY 12-13	Revised Budget FTE FY 13-14	Budget FY 14-15					
				Senior Services		Veterans Services		Total Department	
				FTE	Amount	FTE	Amount	FTE	Amount
Senior Services Program Mgr	1.00	1.00	1.00	1.00	46,297			1.00	46,297
Senior Services Case Manager			5.40	5.20	169,451			5.20	169,451
Senior Services Coordinator	4.60	4.60	1.00	1.00	26,540			1.00	26,540
Food Service Worker	1.20	1.20	1.30	1.10	21,302			1.10	21,302
Office Manager 2	0.50	0.50	1.00	1.00	22,666			1.00	22,666
Veterans Service Officer	1.00	1.00	1.00			1.00	44,949	1.00	44,949
Veterans Claims Specialist	1.00	1.00	1.00			1.00	34,355	1.00	34,355
Department Assistant 4	1.00	1.00	1.00			1.00	28,968	1.00	28,968
Total Regular	<u>10.30</u>	<u>10.30</u>	<u>12.70</u>	<u>9.30</u>	<u>286,256</u>	<u>3.00</u>	<u>108,272</u>	<u>12.30</u>	<u>394,528</u>
Temporary					62,523		31,515		94,038
PERS			25.96%, 28.36%		88,275		37,368		125,643
Social Security			7.65%		26,682		10,694		37,376
Worker's Compensation			0.70%		2,441		979		3,420
Unemployment			0.70%		2,441		979		3,420
Medical & Dental Insurance			\$1,365/mo		134,330		49,140		183,470
Total Personnel Services					<u>602,948</u>		<u>238,947</u>		<u>841,895</u>

Douglas County, Oregon
Health and Social Services Fund
Senior and Veteran Services Programs

SENIOR SERVICES

-Staffing: 9.30 FTE
 -Provide congregate meals and home delivered meals program
 -Provide eligibility and case management for OPI (Oregon Project Independence)
 -Provide information and assistance/referral and family caregiver services
 -Design and implement ADRC (Aging and Disability Resource Center) program
 -Contract for legal assistance for seniors who have civil legal issues
 -Coordinate with Senior & Disability Services on long-term care services, elderly abuse investigations, adult protective services
 -County contribution to this program is estimated at \$200,429; Includes match funds of \$111,520
-
-

DIVISION SUPPORT

-Develop, manage and support services for seniors
 -Review existing and develop new policies and procedures to ensure program efficiency
 -Collaborate with staff, councils and community partners in establishing long and short range goals
 -Monitor programs for efficiency and effectiveness to enhance services
 -Develop and closely monitor program contracts and budgets
 -No County contribution to this program is estimated
-
-

VETERANS SERVICES

-Staffing: 3.0 FTE
-Identifying potential claims and entitlements to which veteran or dependent may be eligible
-Assisting veterans or their dependents in gathering and/or completing entitlement related applications and documentation
-Providing outreach services to assure veterans are receiving services they are eligible for
-County contribution to this program is estimated at \$153,353; Includes match funds of \$114,000