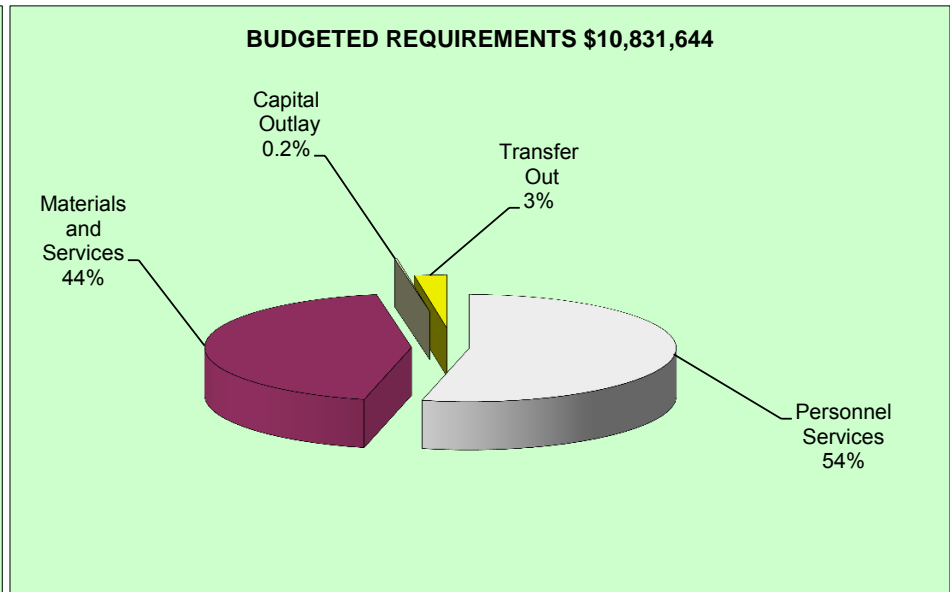
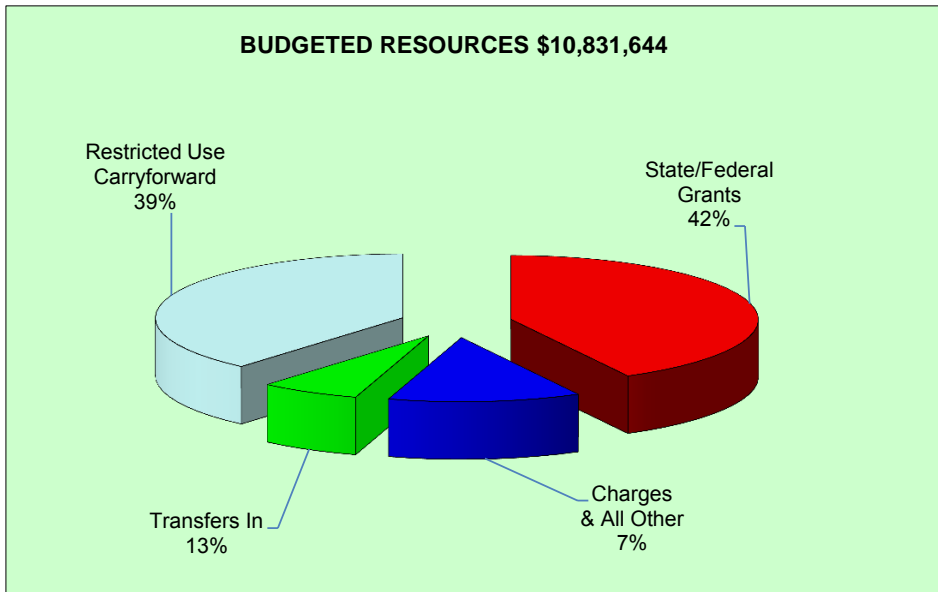
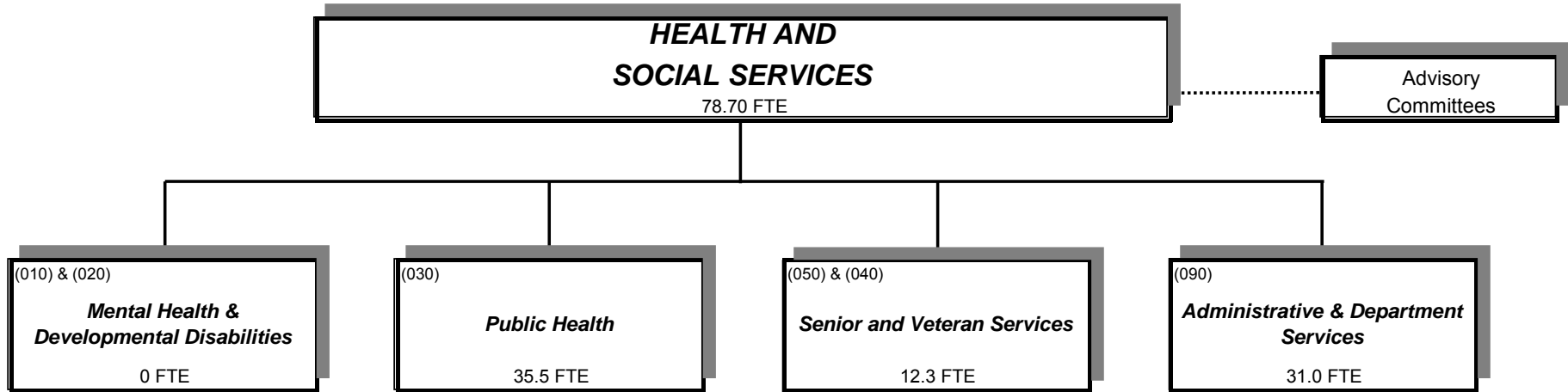


DEPARTMENT OF HEALTH AND SOCIAL SERVICES



Douglas County, Oregon
Health and Social Services Fund (207)
Summary

	Actual FY 10-11	Actual FY 11-12	Actual FY 12-13	Revised Budget FY 13-14	Proposed FY 14-15	Approved FY 14-15	Adopted FY 14-15
<u>RESOURCES</u>							
Beginning Fund Balance							
Use Restricted by Payee	5,447,063	6,854,253	6,973,886	6,666,640	4,358,983	4,358,983	4,193,983
Unrestricted Use	194,803	150,000	150,000				
	<u>5,641,866</u>	<u>7,004,253</u>	<u>7,123,886</u>	<u>6,666,640</u>	<u>4,358,983</u>	<u>4,358,983</u>	<u>4,193,983</u>
Revenues and Other Sources:							
Divisional:							
Intergovernmental Revenues	26,911,626	24,990,205	14,765,250	16,348,746	5,582,979	5,582,979	4,570,196
Charges and Other Revenues	985,807	860,959	999,935	808,166	709,269	709,269	708,069
Interest	79,986	70,599	47,677	43,800	1,250	1,250	
Transfers In - General Fund	218,148	107,014	70,182	96,721			
Transfers In - Public Safety Fund	18,000	18,000	21,532	33,433	18,000	18,000	18,000
Undesignated:							
Transfers In - General Fund	1,133,270	1,185,855	1,177,912	1,287,131	1,364,228	1,364,228	1,341,396
	<u>29,346,837</u>	<u>27,232,632</u>	<u>17,082,488</u>	<u>18,617,997</u>	<u>7,675,726</u>	<u>7,675,726</u>	<u>6,637,661</u>
TOTAL RESOURCES	34,988,703	34,236,885	24,206,374	25,284,637	12,034,709	12,034,709	10,831,644
<u>REQUIREMENTS</u>							
Expenditures and Other Requirements:							
Personnel Services	10,685,059	11,846,511	12,463,313	15,703,408	5,917,634	5,917,634	5,812,963
Materials & Services	16,440,332	14,486,171	4,104,880	8,585,957	5,817,669	5,817,669	4,724,637
Capital Outlay	161,248	82,594	109,415	97,549	20,000	20,000	20,000
Transfers Out - General Fund	697,811	697,723	697,723	897,723	279,406	279,406	274,044
	<u>27,984,450</u>	<u>27,112,999</u>	<u>17,375,331</u>	<u>25,284,637</u>	<u>12,034,709</u>	<u>12,034,709</u>	<u>10,831,644</u>
Ending Fund Balance							
Use Restricted by Payee	6,854,253	6,973,886	6,681,043				
Unrestricted Use	150,000	150,000	150,000				
	<u>7,004,253</u>	<u>7,123,886</u>	<u>6,831,043</u>	-	-	-	-
TOTAL REQUIREMENTS	34,988,703	34,236,885	24,206,374	25,284,637	12,034,709	12,034,709	10,831,644
Staffing FTE	173.93	177.40	179.10	195.50	79.70	79.70	78.80