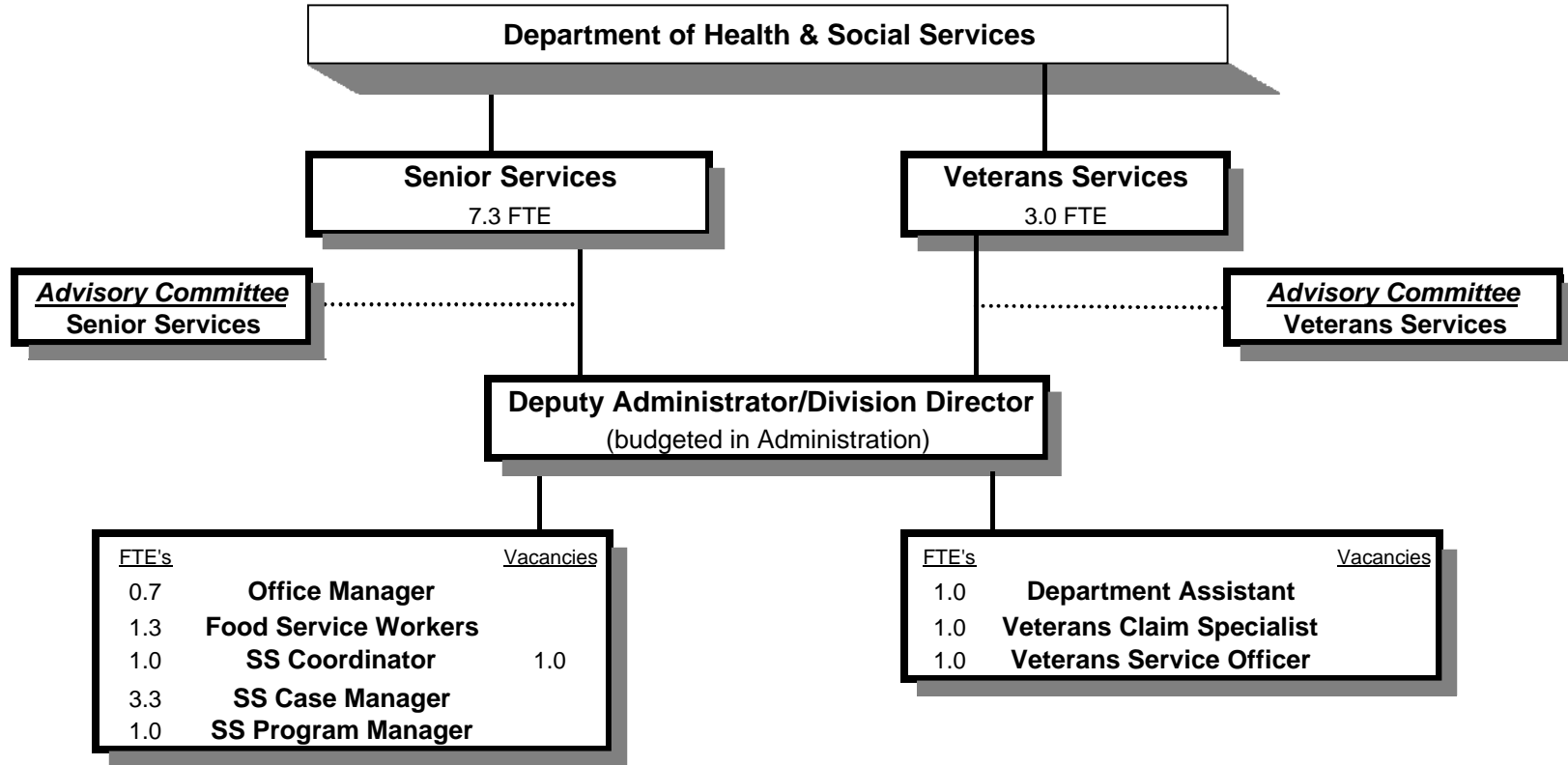


SENIOR AND VETERANS SERVICES DIVISIONS



SIGNIFICANT CHANGES IN THE SENIOR and VETERANS SERVICES PROGRAMS

....No changes anticipated for Veterans Services

....Senior Services will be implementing the Aging and Disability Resource Center (ADRC) Program

....Staff reorganization in Senior Services to accommodate the needs of ADRC

Douglas County, Oregon
Health and Social Services Fund
Senior (4050) and Veterans (4040) Services Division

	Actual FY 09-10	Actual FY 10-11	Actual FY 11-12	Revised Budget FY 12-13	Proposed FY 13-14	Approved FY 13-14	Adopted FY 13-14
<u>RESOURCES</u>							
Intergovernmental Revenues			829,566	1,140,664	995,304	995,304	995,304
Charges and Other Revenues			76,623	68,220	71,175	71,175	71,175
Interest			718				
			<u>906,907</u>	<u>1,208,884</u>	<u>1,066,479</u>	<u>1,066,479</u>	<u>1,066,479</u>
TOTAL RESOURCES			906,907	1,208,884	1,066,479	1,066,479	1,066,479
<u>REQUIREMENTS</u>							
Personnel Services			536,606	581,574	599,118	599,118	599,118
Materials & Services			562,907	855,629	701,197	701,197	701,197
Transfers Out - General Fund			58,222	49,662	66,726	66,726	66,726
Add: Expense Reimbursements to Other Divisions			65,453	37,077	30,123	30,123	30,123
Total Expenditures			<u>1,223,188</u>	<u>1,523,942</u>	<u>1,397,164</u>	<u>1,397,164</u>	<u>1,397,164</u>
TOTAL REQUIREMENTS			1,223,188	1,523,942	1,397,164	1,397,164	1,397,164
Use of General County Resources			316,281	315,058	330,685	330,685	330,685
Staffing FTE			10.30	10.30	10.30	10.30	10.30

Douglas County, Oregon
 Health and Social Services Fund
 Senior and Veterans Services

Department Detail

			Actual	Actual	Revised	Proposed	Approved	Adopted
			FY 10-11	FY 11-12	Budget	FY 13-14	FY 13-14	FY 13-14
					FY 12-13			
207-4040-3390-04	State-Other Assistance	Aid for Veteran Affairs		63,301	63,301	67,560	67,560	67,560
207-4040-3800-01	Interest	General Investments		6	0	0	0	0
207-4050-2680-01	Senior Services Program Rev	Congregate Meals		65,200	45,000	57,875	57,875	57,875
207-4050-2680-02	Senior Services Program Rev	Home Delivered Meals		10,043	20,220	13,000	13,000	13,000
207-4050-2680-10	Senior Services Program Rev	Home Care		596	0	0	0	0
207-4050-3190-01	Fed-Other Assistance	Retired Sr Volunteer Program		2,655	0	0	0	0
207-4050-3210-01	State/Fed-Sr/Disabled Div	SSD Title 19 Reimbursement		39,761	95,446	67,639	67,639	67,639
207-4050-3210-03	State/Fed-Sr/Disabled Div	OAA IIIB Social Services		174,987	178,686	176,892	176,892	176,892
207-4050-3210-04	State/Fed-Sr/Disabled Div	OAA IIIC1 Congregate Meals		197,659	203,543	200,631	200,631	200,631
207-4050-3210-05	State/Fed-Sr/Disabled Div	OAA IIIC2 Home Delivered Meals		100,550	102,132	101,341	101,341	101,341
207-4050-3210-06	State/Fed-Sr/Disabled Div	USDA Cash-in-Lieu		64,912	73,394	72,153	72,153	72,153
207-4050-3210-07	State/Fed-Sr/Disabled Div	OAA IIID In-Home Service		1,485	18,162	9,850	9,850	9,850
207-4050-3210-15	State/Fed-Sr/Disabled Div	OAA IIIE Family Caregiver		72,080	75,742	74,168	74,168	74,168
207-4050-3210-20	State/Fed-Sr/Disabled Div	VII B Elder Abuse Prevention		924	4,606	2,765	2,765	2,765
207-4050-3220-10	State/Fed-Adult/Family Ser Div	Title 19-Home Delivered Meals		5,619	17,000	0	0	0
207-4050-3310-00	State-Sr/Disabled Div	General		3,570	7,142	5,356	5,356	5,356
207-4050-3310-01	State-Sr/Disabled Div	Oregon Project Independence		39,992	153,626	63,353	63,353	63,353
207-4050-3310-02	State-Sr/Disabled Div	OPI Home Care Worker		52,071	147,884	133,596	133,596	133,596
207-4050-3395-00	Local Assistance	General		10,000	0	20,000	20,000	20,000
207-4050-3800-01	Interest	General Investments		712	0	0	0	0
207-4050-3840-XX	Contributions and Donations	All		535	3,000	300	300	300
207-4050-3875-00	Expense Reimbursements	General		249	0	0	0	0
Total Revenue			0	906,907	1,208,884	1,066,479	1,066,479	1,066,479
207-4040-4000-00	Regular Employees	General		101,502	104,795	111,732	111,732	111,732
207-4040-4030-00	Temporary Employees	General		841	0	0	0	0
207-4040-4050-00	Overtime	General		18	0	0	0	0
207-4040-4500-00	PERS	General		24,866	26,668	35,136	35,136	35,136
207-4040-4510-00	Social Security	General		7,243	8,016	8,548	8,548	8,548
207-4040-4520-00	Workers' Compensation	General		358	367	391	391	391
207-4040-4520-01	Workers' Compensation	Workers Comp Claims		315	0	0	0	0
207-4040-4530-00	Medical and Dental Insurance	General		36,901	36,699	38,916	38,916	38,916
207-4040-4540-00	Unemployment	General		2,303	2,358	782	782	782
207-4050-4000-00	Regular Employees	General		184,250	187,879	208,826	208,826	208,826

Douglas County, Oregon
 Health and Social Services Fund
 Senior and Veterans Services

Department Detail

			Actual	Actual	Revised	Proposed	Approved	Adopted
			FY 10-11	FY 11-12	Budget	FY 13-14	FY 13-14	FY 13-14
					FY 12-13			
207-4050-4030-00	Temporary Employees	General		41,726	63,940	51,000	51,000	51,000
207-4050-4500-00	PERS	General		51,239	63,022	68,386	68,386	68,386
207-4050-4510-00	Social Security	General		16,751	19,263	19,876	19,876	19,876
207-4050-4520-00	Workers' Compensation	General		790	881	910	910	910
207-4050-4520-01	Workers' Compensation	Workers Comp Claims		224	0	0	0	0
207-4050-4530-00	Medical and Dental Insurance	General		62,195	62,021	52,797	52,797	52,797
207-4050-4540-00	Unemployment	General		5,084	5,665	1,818	1,818	1,818
Total Personnel Services			0	536,606	581,574	599,118	599,118	599,118
207-4040-5099-00	Other Professional Services	General		542	0	0	0	0
207-4040-6290-00	Software Purchases	General		332	0	0	0	0
207-4040-6290-10	Software Purchases	Software Updates/Maintenance		1,954	2,219	1,195	1,195	1,195
207-4040-6295-00	Equipment-Noninventory	General		1,080	0	0	0	0
207-4040-6299-00	Other Materials and Supplies	General		433	1,402	0	0	0
207-4040-6450-02	Equipment/Vehicle Rent	Copy Machines		411	525	425	425	425
207-4040-6500-00	Interdept Vehicle Expense	General		709	1,375	700	700	700
207-4040-6680-01	Communication	Telephone		540	884	550	550	550
207-4040-6720-01	Fire/Liability Insurance	Liability Ins Interdept Charges		750	597	848	848	848
207-4040-7400-00	Office Supplies and Expenses	General		3,285	1,758	2,610	2,610	2,610
207-4040-7410-00	Postage	General		2,181	2,580	2,000	2,000	2,000
207-4040-7500-00	Subscriptions, Books & Periodi	General		150	164	165	165	165
207-4040-7560-00	Conventions, Schools, Seminars	General		1,766	2,600	1,800	1,800	1,800
207-4040-7580-00	Dues and Memberships	General		165	165	165	165	165
207-4040-7800-00	Legal Publication and Printing	General		60	133	135	135	135
207-4040-7850-00	Pre-employment Training	General		0	35	35	35	35
207-4050-5300-00	Mental Health Contracts	General		0	55,962	14,432	14,432	14,432
207-4050-5335-05	Senior Service Contracts	Food Services Contracts		212,800	229,322	241,075	241,075	241,075
207-4050-5335-07	Senior Service Contracts	Other Agency Food Service		10,815	1,582	10,340	10,340	10,340
207-4050-5335-10	Senior Service Contracts	Home Delivered Food Services		166,058	171,585	141,807	141,807	141,807
207-4050-5335-25	Senior Service Contracts	Legal Services		5,039	8,280	8,280	8,280	8,280
207-4050-5335-30	Senior Service Contracts	Adult Day Care		0	0	24,000	24,000	24,000
207-4050-5370-10	Other Health/Welfare Contracts	Home Care Workers		52,071	252,444	133,596	133,596	133,596
207-4050-5790-55	Transport Costs	Volunteer Reimbursements		13,241	18,218	18,552	18,552	18,552
207-4050-6220-02	Household Expenses	Kitchen		0	200	100	100	100

Douglas County, Oregon
 Health and Social Services Fund
 Senior and Veterans Services

Department Detail

			Actual	Actual	Revised	Proposed	Approved	Adopted
			FY 10-11	FY 11-12	Budget	FY 13-14	FY 13-14	FY 13-14
					FY 12-13			
207-4050-6290-10	Software Purchases	Software Updates/Maintenance		0	553	0	0	0
207-4050-6295-00	Equipment-Noninventory	General		65	3,572	1,912	1,912	1,912
207-4050-6299-00	Other Materials and Supplies	General		3,016	3,248	4,122	4,122	4,122
207-4050-6400-00	Land and Building Rent	General		41,412	41,412	42,684	42,684	42,684
207-4050-6450-02	Equipment/Vehicle Rent	Copy Machines		1,606	1,644	1,144	1,144	1,144
207-4050-6500-00	Interdept Vehicle Expense	General		4,848	5,532	7,466	7,466	7,466
207-4050-6510-00	Equip/Vehicle Main & Repair	General		552	0	775	775	775
207-4050-6510-02	Equip/Vehicle Main & Repair	Equipment Service Contracts		147	0	250	250	250
207-4050-6680-01	Communication	Telephone		7,947	8,694	12,993	12,993	12,993
207-4050-6720-01	Fire/Liability Insurance	Liability Ins Interdept Charges		3,444	1,856	2,482	2,482	2,482
207-4050-6800-00	Laundry and Dry Cleaning	General		3,764	3,225	3,800	3,800	3,800
207-4050-6850-00	License and Permit Fees	General		3	2,500	2,140	2,140	2,140
207-4050-7400-00	Office Supplies and Expenses	General		2,764	3,456	2,658	2,658	2,658
207-4050-7410-00	Postage	General		2,054	1,550	1,125	1,125	1,125
207-4050-7550-00	Travel	General		0	900	25	25	25
207-4050-7550-80	Travel	Mileage Reimbursement		9,425	9,122	4,027	4,027	4,027
207-4050-7560-00	Conventions, Schools, Seminars	General		1,890	8,110	4,509	4,509	4,509
207-4050-7580-00	Dues and Memberships	General		5,094	5,550	5,800	5,800	5,800
207-4050-7800-00	Legal Publication and Printing	General		122	475	375	375	375
207-4050-7820-00	Advisory Committee Expense	General		0	2,200	100	100	100
207-4050-7850-00	Pre-employment Training	General		372	0	0	0	0
Total Materials & Services			0	562,907	855,629	701,197	701,197	701,197
207-4040-9500-01	Transfers Out	General Fund		9,094	12,093	16,985	16,985	16,985
207-4040-9899-15	Intrafund Transfers	Administration		0	(32,644)	(45,553)	(45,553)	(45,553)
207-4040-9899-22	Intrafund Transfers	Accounting		3,563	3,765	4,311	4,311	4,311
207-4040-9899-24	Intrafund Transfers	Offices		0	0	1,764	1,764	1,764
207-4040-9899-41	Intrafund Transfers	Info Tech		2,358	3,200	2,690	2,690	2,690
207-4040-9899-50	Intrafund Transfers	Dept. Admin		8,597	9,825	11,486	11,486	11,486
207-4050-9500-01	Transfers Out	General Fund		49,128	37,569	49,741	49,741	49,741
207-4050-9899-03	Intrafund Transfers	Public Health		2,140	0	0	0	0
207-4050-9899-22	Intrafund Transfers	Accounting		10,462	11,695	12,627	12,627	12,627
207-4050-9899-24	Intrafund Transfers	Offices		5,634	665	1,283	1,283	1,283
207-4050-9899-30	Intrafund Transfers	Facilities		531	0	0	0	0

Douglas County, Oregon
 Health and Social Services Fund
 Senior and Veterans Services

Department Detail

			Actual	Actual	Revised	Proposed	Approved	Adopted
			FY 10-11	FY 11-12	Budget	FY 13-14	FY 13-14	FY 13-14
					FY 12-13			
207-4050-9899-41	Intrafund Transfers	Info Tech		6,923	10,047	7,878	7,878	7,878
207-4050-9899-50	Intrafund Transfers	Dept. Admin		25,245	30,524	33,637	33,637	33,637
Total Other Requirements			0	123,675	86,739	96,849	96,849	96,849
Total Expenditures			0	1,223,188	1,523,942	1,397,164	1,397,164	1,397,164

Douglas County, Oregon
Health and Social Services Fund
Senior and Veterans Services Division

PERSONNEL SERVICES

	Actual FTE FY 10-11	Actual FTE FY 11-12	Revised Budget FTE FY 12-13	Budget FY 13-14		Total Department			
				Senior Services		Veterans Services		Total Department	
				FTE	Amount	FTE	Amount	FTE	Amount
Senior Services Program Mgr		1.00	1.00	1.00	44,493		1.00	44,493	
Senior Services Case Manager				3.30	101,292		3.30	101,292	
Senior Services Coordinator		4.60	4.60	1.00	22,714		1.00	22,714	
Food Service Worker		1.20	1.20	1.30	25,068		1.30	25,068	
Office Manager 2		0.50	0.50	0.70	15,259		0.70	15,259	
Veterans Service Officer		1.00	1.00			1.00	50,590	1.00	50,590
Veterans Claims Specialist		1.00	1.00			1.00	33,024	1.00	33,024
Department Assistant 4		1.00	1.00			1.00	28,118	1.00	28,118
Total Regular		<u>10.30</u>	<u>10.30</u>	<u>7.30</u>	<u>208,826</u>	<u>3.00</u>	<u>111,732</u>	<u>10.30</u>	<u>320,558</u>
Temporary					51,000				51,000
PERS			30.36%, 32.76%		68,386		35,136		103,522
Social Security			7.65%		19,876		8,548		28,424
Worker's Compensation			0.35%		910		391		1,301
Unemployment			0.70%		1,818		782		2,600
Medical & Dental Insurance			\$1,081/mo		52,797		38,916		91,713
Total Personnel Services					<u>403,613</u>		<u>195,505</u>		<u>599,118</u>

Douglas County, Oregon
Health and Social Services Fund
Senior and Veteran Services Programs

SENIOR SERVICES

-Staffing: 7.30 FTE
 -Provide congregate meals and home delivered meals program
 -Provide eligibility and case management for OPI (Oregon Project Independence)
 -Provide information and assistance/referral and family caregiver services
 -Design and implement ADRC (Aging and Disability Resource Center) program
 -Contract for legal assistance for seniors who have civil legal issues
 -Coordinate with Senior & Disability Services on long-term care services, elderly abuse investigations, adult protective services
 -County contribution to this program is estimated at \$200,429; Includes match funds of \$116,387
-

DIVISION SUPPORT

-Develop, manage and support services for seniors
 -Review existing and develop new policies and procedures to ensure program efficiency
 -Collaborate with staff, councils and community partners in establishing long and short range goals
 -Monitor programs for efficiency and effectiveness to enhance services
 -Develop and closely monitor program contracts and budgets
 -No County contribution to this program is estimated
-

VETERANS SERVICES

-Staffing: 3.00 FTE
-Identifying potential claims and entitlements to which veteran or dependent may be eligible
-Assisting veterans or their dependents in gathering and/or completing entitlement related applications and documentation
-Providing outreach services to assure veterans are receiving services they are eligible for
-County contribution to this program is estimated at \$130,256; Includes match funds of \$114,000