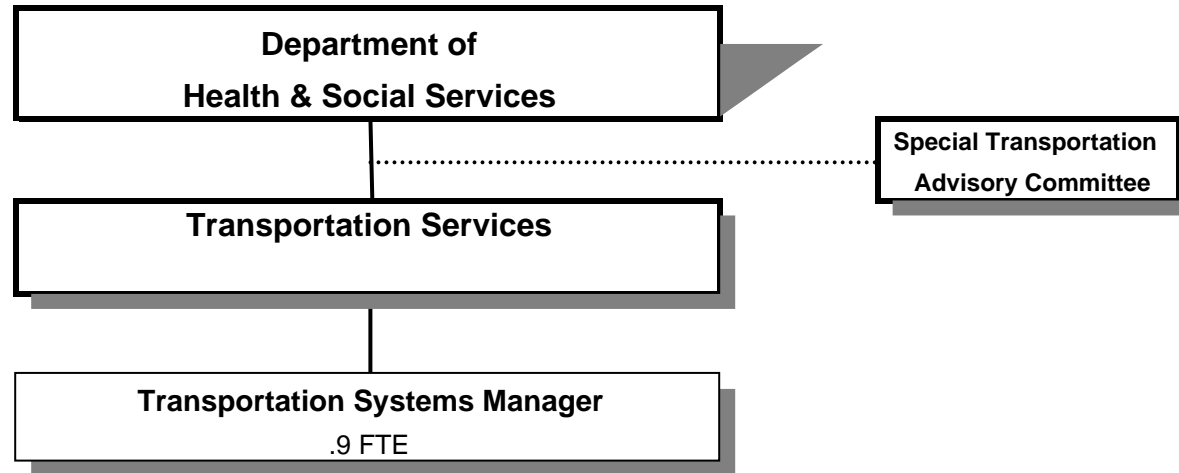


TRANSPORTATION SERVICES DIVISION



SIGNIFICANT CHANGES IN TRANSPORTATION SERVICES PROGRAMS

-Reduction in County fair-share to U-Trans by 10%.*
-Dial-A-Ride now operating in North County with North County Betterment.*
-One day per week service from Coos Bay to Reedsport was implemented.*
-Central Dispatch for Dial-A-Rides will be implemented in 2012.*

Douglas County, Oregon
Health and Social Services Fund
Transportation Services (4060)

	Actual FY 08-09	Actual FY 09-10	Actual FY 10-11	Revised Budget FY 11-12	Proposed FY 12-13	Approved FY 12-13	Adopted FY 12-13
<u>RESOURCES</u>							
Beginning Balance (Use Restricted)	50,000	94,913	208,374	205,000	266,000	266,000	266,000
Intergovernmental Revenues	683,625	1,457,161	984,908	982,737	1,012,202	1,012,202	1,012,202
Charges and Other Revenues	32,449	2,150	22,425	11,108	7,001	7,001	7,001
Interest	459	2,683	2,597	2,917	4,094	4,094	4,094
	<u>716,533</u>	<u>1,461,994</u>	<u>1,009,930</u>	<u>996,762</u>	<u>1,023,297</u>	<u>1,023,297</u>	<u>1,023,297</u>
TOTAL RESOURCES	766,533	1,556,907	1,218,304	1,201,762	1,289,297	1,289,297	1,289,297
<u>REQUIREMENTS</u>							
Personnel Services	95,266	32,939	62,802	89,376	93,937	93,937	93,937
Materials & Services	664,735	758,219	867,163	1,129,264	1,184,986	1,184,986	1,184,986
Capital Outlay		607,275	74,365	4,108	30,000	30,000	30,000
Transfers Out - General Fund		1,480	658	3,728			
Add: Expense Reimbursements to Other Divisions	<u>11,571</u>	<u>8,050</u>	<u>5,439</u>	<u>6,190</u>	<u>8,188</u>	<u>8,188</u>	<u>8,188</u>
Total Expenditures	771,572	1,407,963	1,010,427	1,232,666	1,317,111	1,317,111	1,317,111
Ending Balance (Use Restricted)	<u>94,913</u>	<u>208,374</u>	<u>255,423</u>				
TOTAL REQUIREMENTS	866,485	1,616,337	1,265,850	1,232,666	1,317,111	1,317,111	1,317,111
Use of General County Resources	99,952	59,430	47,546	30,904	27,814	27,814	27,814
Staffing FTE	5.31			0.90	0.90	0.90	0.90

Capital Outlay is for Dispatch Software

Douglas County, Oregon
 Health and Social Services Fund
 Transportation Services

Department Detail

			Actual	Actual	Revised	Proposed	Approved	Adopted
			FY 09-10	FY 10-11	Budget	FY 12-13	FY 12-13	FY 12-13
					FY 11-12			
207-4060-3250-50	State/Fed-Transportation Dept	Section 5310 Mobility Mgmt	0	0	82,500	111,600	111,600	111,600
207-4060-3250-51	State/Fed-Transportation Dept	Section 5310 Purchased Svcs	38,152	81,978	255,043	266,800	266,800	266,800
207-4060-3250-52	State/Fed-Transportation Dept	Section 5310 Jobs in Trans Act	8,357	64,607	0	0	0	0
207-4060-3250-53	State/Fed-Transportation Dept	Section 5311 Equipment	606,840	0	0	0	0	0
207-4060-3250-54	State/Fed-Transportation Dept	Section 5311 PM & Rehab	51,447	49,589	0	0	0	0
207-4060-3250-56	State/Fed-Transportation Dept	Section 5311 Small Cities & Rural	313,581	289,053	304,192	334,611	334,611	334,611
207-4060-3250-57	State/Fed-Transportation Dept	Section 5310 PM & Rehab	41,224	63,425	0	82,165	82,165	82,165
207-4060-3250-59	State/Fed-Transportation Dept	Section 5310 Equipment	0	120,184	160,000	30,000	30,000	30,000
207-4060-3350-50	State-Transportation Dept	Special Transport Operations	167,340	167,341	164,026	164,026	164,026	164,026
207-4060-3350-53	State-Transportation Dept	Special Transport - STO	155,220	148,731	16,976	23,000	23,000	23,000
207-4060-3650-00	Other Intergovernmental	General	75,000	0	0	0	0	0
207-4060-3800-01	Interest	General Investments	2,683	2,597	2,917	4,094	4,094	4,094
207-4060-3820-60	Rents, Leases and Royalties	Vehicles	6,000	7,000	7,000	7,001	7,001	7,001
207-4060-3870-80	Other Sales	Sale of Inventory	0	14,700	0	0	0	0
207-4060-3875-00	Expense Reimbursements	General	0	725	4,108	0	0	0
207-4060-3879-XX	Miscellaneous	All	(3,850)	0	0	0	0	0
Total Revenue			1,461,994	1,009,930	996,762	1,023,297	1,023,297	1,023,297
207-4060-4000-00	Regular Employees	General	19,826	20,579	38,900	39,656	39,656	39,656
207-4060-4030-00	Temporary Employees	General	1,651	24,655	15,913	16,540	16,540	16,540
207-4060-4500-00	PERS	General	4,331	7,186	13,768	14,120	14,120	14,120
207-4060-4510-00	Social Security	General	1,631	3,460	4,193	4,299	4,299	4,299
207-4060-4520-00	Workers' Compensation	General	160	158	192	197	197	197
207-4060-4530-00	Medical and Dental Insurance	General	5,015	5,746	15,177	17,860	17,860	17,860
207-4060-4540-00	Unemployment	General	325	1,018	1,233	1,265	1,265	1,265
Total Personnel Services			32,939	62,802	89,376	93,937	93,937	93,937
207-4060-5099-00	Other Professional Services	General	0	0	0	21,500	21,500	21,500
207-4060-5300-00	Health & SS Contracts	General	0	0	228,762	250,130	250,130	250,130
207-4060-5335-81	Senior Service Contracts	Special Transportation-STO	104,958	151,543	16,976	23,000	23,000	23,000
207-4060-5335-82	Senior Service Contracts	Special Transportation-Provi	26,406	67,243	100,000	164,026	164,026	164,026
207-4060-5335-84	Senior Service Contracts	Job & Transportation Act	9,314	0	0	0	0	0
207-4060-5335-85	Senior Service Contracts	Transportation Providers	403,538	335,606	335,568	27,814	27,814	27,814
207-4060-5335-86	Senior Service Contracts	Transportation PM	98,959	107,440	0	82,165	82,165	82,165
207-4060-5335-87	Senior Service Contracts	Transportation Purchased Svcs	38,152	81,978	255,043	266,800	266,800	266,800
207-4060-5335-88	Senior Service Contracts	Transportation 5310 Equip	0	117,108	160,000	0	0	0

Douglas County, Oregon
 Health and Social Services Fund
 Transportation Services

Department Detail

			Actual	Actual	Revised	Proposed	Approved	Adopted
			FY 09-10	FY 10-11	Budget	FY 12-13	FY 12-13	FY 12-13
					FY 11-12			
207-4060-5335-89	Senior Service Contracts	Transportation 5310 Mobil Mgmt	0	0	25,000	0	0	0
207-4060-5335-90	Senior Service Contracts	City Contributions	75,000	0	0	0	0	0
207-4060-5335-91	Senior Service Contracts	Transportation 5311 Operations	0	0	0	334,611	334,611	334,611
207-4060-6290-10	Software Purchases	Software Updates/Maintenance	0	0	0	2,600	2,600	2,600
207-4060-6295-00	Equipment-Noninventory	General	865	1,931	2,500	2,000	2,000	2,000
207-4060-6299-00	Other Materials and Supplies	General	0	646	865	2,500	2,500	2,500
207-4060-6500-00	Interdept Vehicle Expense	General	1,220	2,072	200	1,200	1,200	1,200
207-4060-6510-02	Equip/Vehicle Main & Repair	Equipment Service Contracts	0	0	0	100	100	100
207-4060-6680-01	Communication	Telephone	0	13	1,500	500	500	500
207-4060-7300-00	Advertising/Publicity	General	0	0	0	3,500	3,500	3,500
207-4060-7400-00	Office Supplies and Expenses	General	50	237	650	500	500	500
207-4060-7410-00	Postage	General	6	0	500	50	50	50
207-4060-7500-00	Subscriptions & Periodicals	General	0	0	0	100	100	100
207-4060-7550-00	Travel	General	30	0	200	100	100	100
207-4060-7550-80	Travel	Mileage Reimbursement	207	0	0	0	0	0
207-4060-7560-00	Conventions, Schools, Seminars	General	0	1,211	1,200	1,000	1,000	1,000
207-4060-7580-00	Dues and Memberships	General	0	0	0	690	690	690
207-4060-7800-00	Legal Publication and Printing	General	383	135	300	100	100	100
207-4060-7900-00	Miscellaneous	General	(869)	0	0	0	0	0
Total Materials and Services			758,219	867,163	1,129,264	1,184,986	1,184,986	1,184,986
207-4060-8200-99	Furniture and Equipment	Noninventory	3,559	74,365	0	30,000	30,000	30,000
207-4060-8300-00	Vehicles and Heavy Equipment	General	555,512	0	0	0	0	0
207-4060-8300-99	Vehicles and Heavy Equipment	Noninventory	48,204	0	4,108	0	0	0
Total Capital Outlay			607,275	74,365	4,108	30,000	30,000	30,000
207-4060-9500-01	Transfers Out	General Fund	1,480	658	3,728	0	0	0
207-4060-9899-12	Intrafund Transfers	Umpqua Transit	6,288	0	0	0	0	0
207-4060-9899-22	Intrafund Transfers	Accounting	625	1,481	1,735	1,707	1,707	1,707
207-4060-9899-41	Intrafund Transfers	Info Tech	372	1,089	1,126	2,027	2,027	2,027
207-4060-9899-50	Intrafund Transfers	Dept. Admin	765	2,869	3,329	4,454	4,454	4,454
Total Other			9,530	6,097	9,918	8,188	8,188	8,188
Total Expenditures			1,407,963	1,010,427	1,232,666	1,317,111	1,317,111	1,317,111

Douglas County, Oregon
Health and Social Services Fund
Transportation Services

PERSONNEL SERVICES						
		Actual FTE FY 09-10	Actual FTE FY 10-11	Revised Budget FTE FY 11-12	Budget FY 12-13	
					FTE	Amount
Transportation Systems Manager				0.90	0.90	39,656
Temporary						16,540
PERS	24.60%, 26.39%					14,120
Social Security				7.65%		4,299
Worker's Compensation				0.35%		197
Unemployment				2.25%		1,265
Medical & Dental Insurance	\$1,019/mo					17,860
Total Personnel Services						<u>93,937</u>

Douglas County, Oregon
Health and Social Services Fund
Transportation Programs

SPECIAL TRANSPORTATION

-Staffing: .90 FTE includes Administrative Support
 -Administer the Special Transportation Funds provided by ODOT
 -Staff the Special Transportation Advisory Committee
 -Update & Coordinate Transportation System Plan
 -Collect quarterly reports from STF agencies, monitor activity, and submit to ODOT
 -Monitor programs for compliance with federal and state regulations
 -No County contribution to this program.
-
-

UMPQUA TRANSIT

-Staffing: Administrative Support
 -Administer the 5311 Public Transportation Funds provided by ODOT
 -Monitor contracted operator of Public Transportation for compliance and reporting to ODOT
 -County contribution to this program is estimated at \$27,814
-
-