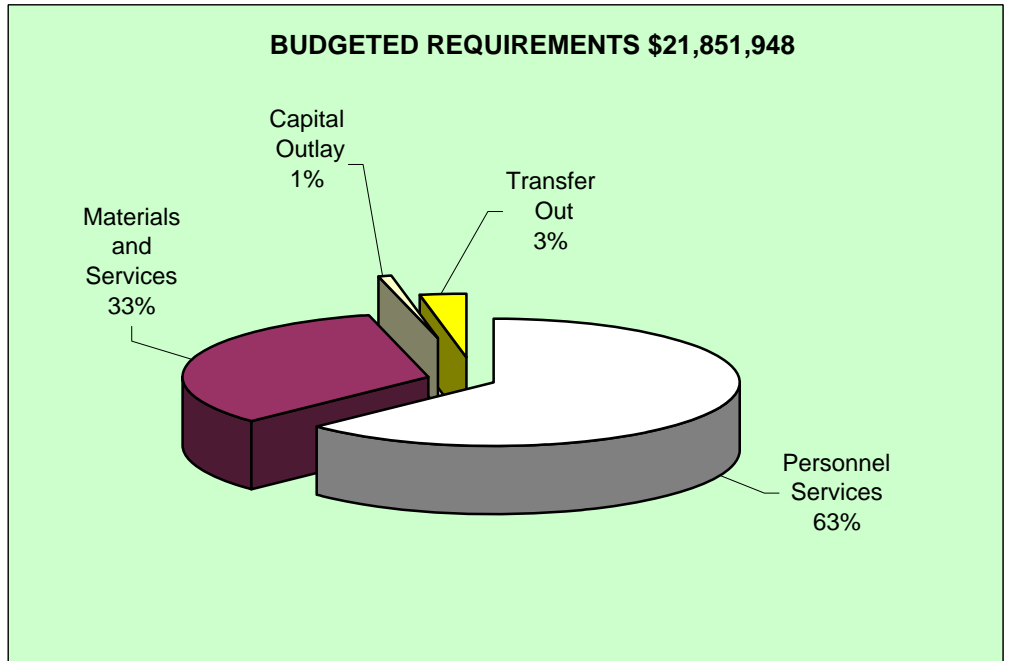
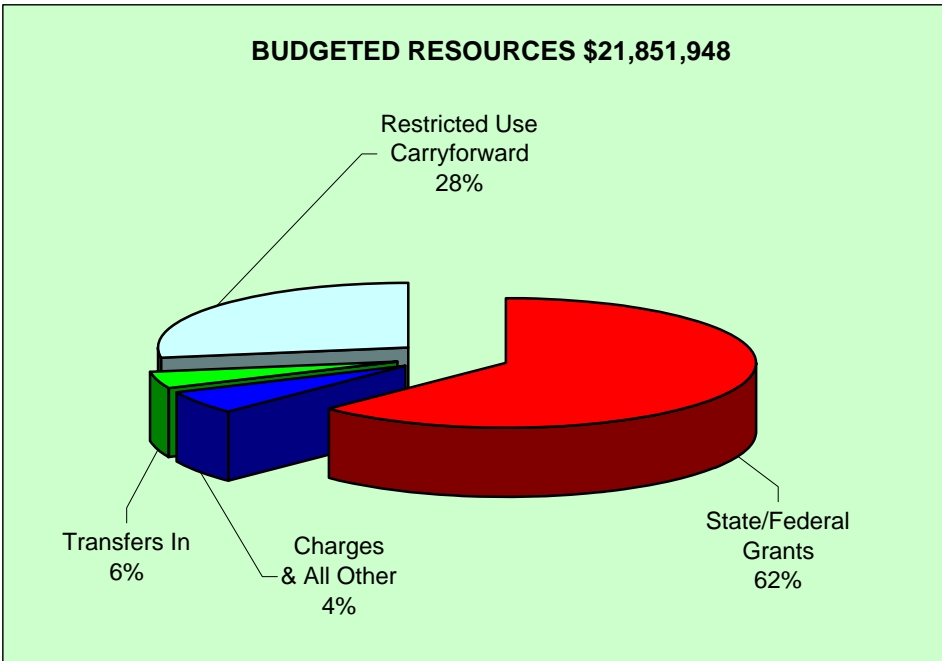
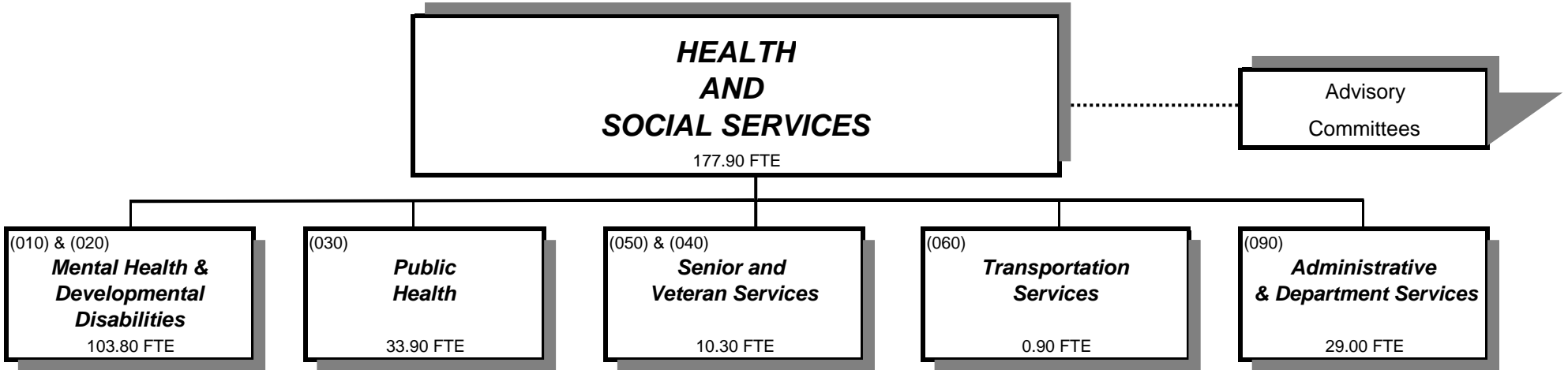


# DEPARTMENT OF HEALTH AND SOCIAL SERVICES



Douglas County, Oregon  
Health and Social Services Fund (207)  
Summary

	Actual FY 08-09	Actual FY 09-10	Actual FY 10-11	Revised Budget FY 11-12	Proposed FY 12-13	Approved FY 12-13	Adopted FY 12-13
<b><u>RESOURCES</u></b>							
<b><i>Beginning Fund Balance</i></b>							
Use Restricted by Payee	1,733,108	3,089,116	5,447,063	6,851,748	6,038,173	6,038,173	6,038,173
Unrestricted Use	176,498	557,822	194,803				
	<u>1,909,606</u>	<u>3,646,938</u>	<u>5,641,866</u>	<u>6,851,748</u>	<u>6,038,173</u>	<u>6,038,173</u>	<u>6,038,173</u>
<b><i>Revenues and Other Sources:</i></b>							
Divisional:							
Intergovernmental Revenues	23,048,226	27,039,595	26,911,626	27,817,633	13,643,832	13,643,832	13,643,832
Charges and Other Revenues	1,120,657	808,583	985,807	804,220	802,419	802,419	802,419
Interest	20,147	65,563	79,986	52,917	59,094	59,094	59,094
Transfers In - General Fund	85,000	151,999	218,148	184,142	68,599	68,599	68,599
Transfers In - Public Safety Fund		18,000	18,000	45,000	18,000	18,000	18,000
Undesignated:							
Transfers In - General Fund	2,109,987	1,182,624	1,133,270	1,307,105	1,221,831	1,221,831	1,221,831
	<u>26,384,017</u>	<u>29,266,364</u>	<u>29,346,837</u>	<u>30,211,017</u>	<u>15,813,775</u>	<u>15,813,775</u>	<u>15,813,775</u>
<b>TOTAL RESOURCES</b>	<b>28,293,623</b>	<b>32,913,302</b>	<b>34,988,703</b>	<b>37,062,765</b>	<b>21,851,948</b>	<b>21,851,948</b>	<b>21,851,948</b>
<b><u>REQUIREMENTS</u></b>							
<b><i>Expenditures and Other Requirements:</i></b>							
Personnel Services	9,021,553	9,513,418	10,685,059	13,600,906	13,709,599	13,709,599	13,709,599
Materials & Services	14,897,462	16,424,156	16,440,332	22,670,528	7,301,251	7,301,251	7,301,251
Capital Outlay	70,181	676,373	161,248	93,608	143,375	143,375	143,375
Transfers Out - General Fund	657,489	657,489	697,811	697,723	697,723	697,723	697,723
	<u>24,646,685</u>	<u>27,271,436</u>	<u>27,984,450</u>	<u>37,062,765</u>	<u>21,851,948</u>	<u>21,851,948</u>	<u>21,851,948</u>
<b><i>Ending Fund Balance</i></b>							
Use Restricted by Payee	3,089,116	5,447,063	6,854,253				
Unrestricted Use	557,822	194,803	150,000				
	<u>3,646,938</u>	<u>5,641,866</u>	<u>7,004,253</u>	-	-	-	-
<b>TOTAL REQUIREMENTS</b>	<b>28,293,623</b>	<b>32,913,302</b>	<b>34,988,703</b>	<b>37,062,765</b>	<b>21,851,948</b>	<b>21,851,948</b>	<b>21,851,948</b>
<b>Staffing FTE</b>	<b>151.76</b>	<b>159.05</b>	<b>173.93</b>	<b>177.40</b>	<b>177.90</b>	<b>177.90</b>	<b>177.90</b>