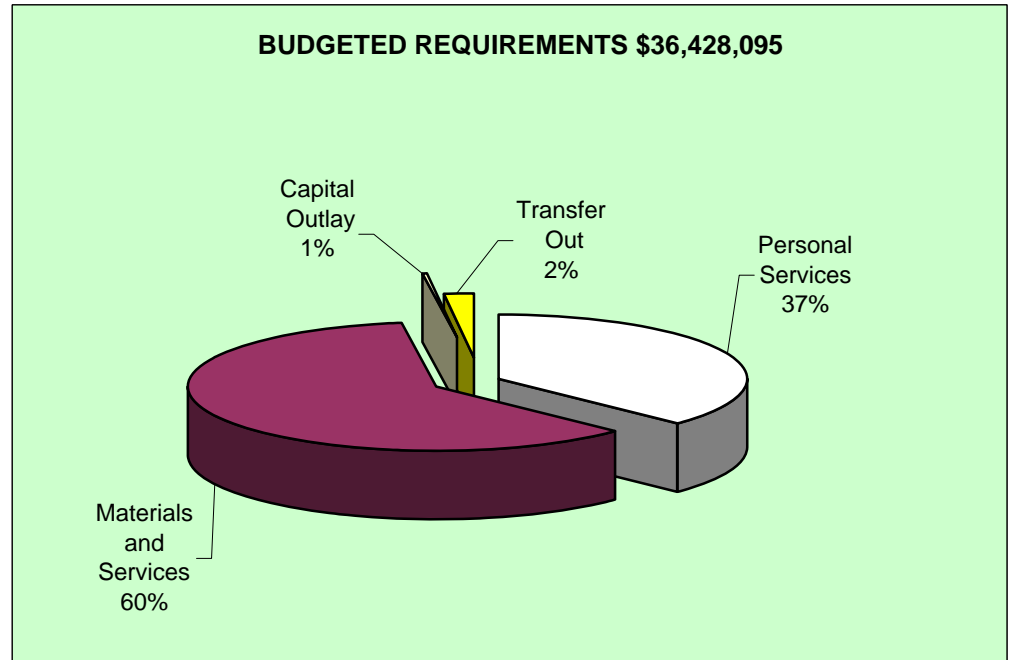
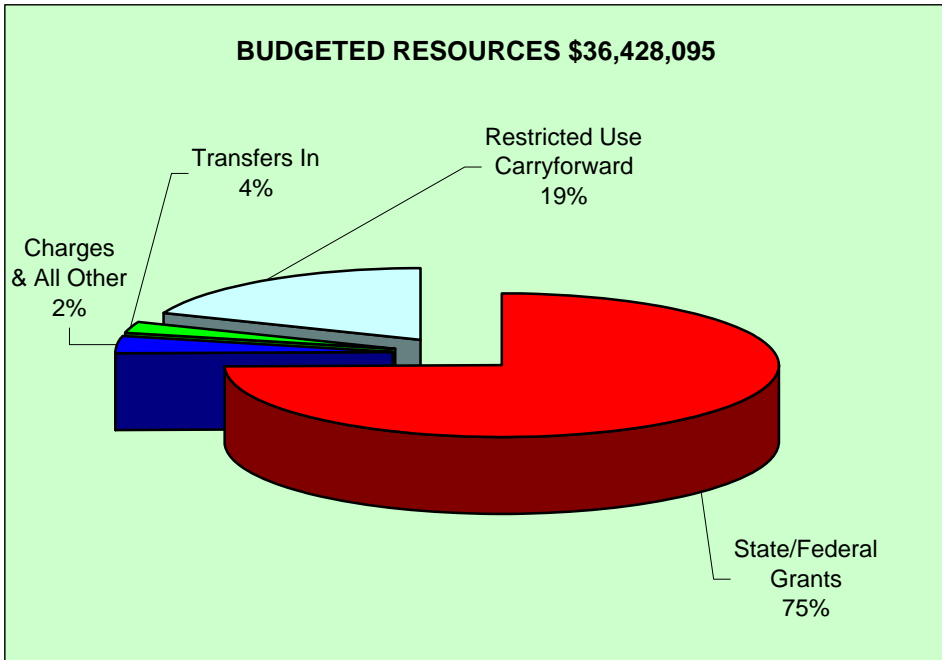
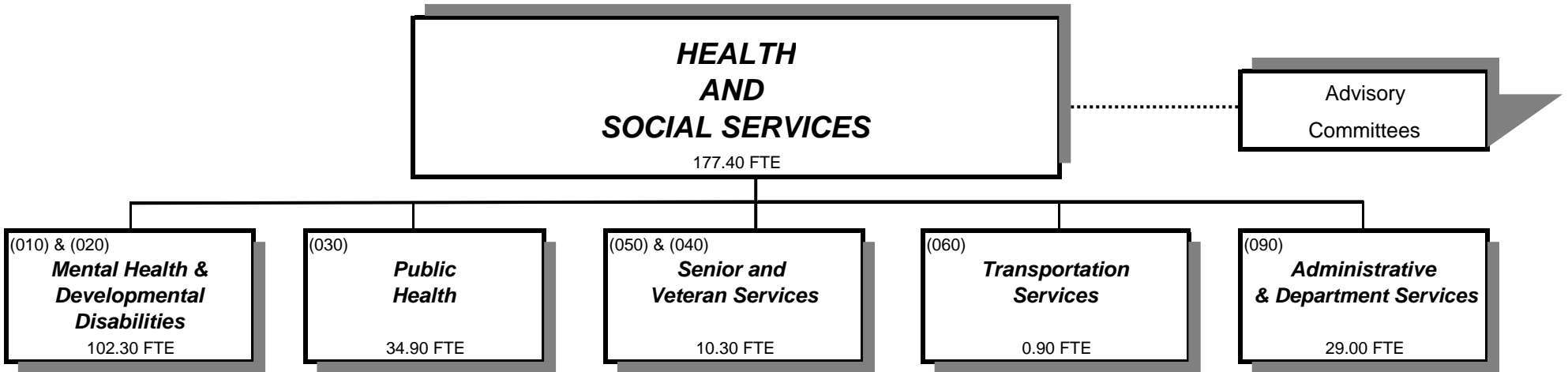


DEPARTMENT OF HEALTH AND SOCIAL SERVICES



Douglas County, Oregon
Health and Social Services Fund (207)
Summary

	Actual FY 07-08	Actual FY 08-09	Actual FY 09-10	Revised Budget FY 10-11	Proposed FY 11-12	Approved FY 11-12	Adopted FY 11-12
<u>RESOURCES</u>							
Beginning Fund Balance							
Use Restricted by Payee	1,228,010	1,733,108	3,089,116	4,475,890	6,851,748	6,851,748	6,851,748
Unrestricted Use		176,498	557,822				
	<u>1,228,010</u>	<u>1,909,606</u>	<u>3,646,938</u>	<u>4,475,890</u>	<u>6,851,748</u>	<u>6,851,748</u>	<u>6,851,748</u>
Revenues and Other Sources:							
Divisional:							
Intergovernmental Revenues	19,868,996	23,048,226	27,039,595	28,794,806	27,197,714	27,197,714	27,197,714
Charges and Other Revenues	1,552,198	1,120,657	808,583	964,603	853,298	853,298	853,298
Interest	35,099	20,147	65,563	30,360	52,917	52,917	52,917
Transfers In - General Fund	15,000	85,000	151,999	251,642	147,313	147,313	147,313
Transfers In - Public Safety Fund			18,000	18,000	18,000	18,000	18,000
Undesignated:							
Transfers In - General Fund	2,261,497	2,109,987	1,182,624	1,903,019	1,307,105	1,307,105	1,307,105
Transfers In - County Forest Management	60,000						
	<u>23,792,790</u>	<u>26,384,017</u>	<u>29,266,364</u>	<u>31,962,430</u>	<u>29,576,347</u>	<u>29,576,347</u>	<u>29,576,347</u>
TOTAL RESOURCES	25,020,800	28,293,623	32,913,302	36,438,320	36,428,095	36,428,095	36,428,095
<u>REQUIREMENTS</u>							
Expenditures and Other Requirements:							
Personal Services	9,520,554	9,021,553	9,513,418	12,771,900	13,579,509	13,579,509	13,579,509
Materials & Services	12,498,794	14,897,462	16,424,156	22,781,838	22,061,363	22,061,363	22,061,363
Capital Outlay	434,356	70,181	676,373	186,771	89,500	89,500	89,500
Transfers Out - General Fund	657,490	657,489	657,489	697,811	697,723	697,723	697,723
	<u>23,111,194</u>	<u>24,646,685</u>	<u>27,271,436</u>	<u>36,438,320</u>	<u>36,428,095</u>	<u>36,428,095</u>	<u>36,428,095</u>
Ending Fund Balance							
Use Restricted by Payee	1,733,108	3,089,116	5,447,063				
Unrestricted Use	176,498	557,822	194,803				
	<u>1,909,606</u>	<u>3,646,938</u>	<u>5,641,866</u>	-	-	-	-
TOTAL REQUIREMENTS	25,020,800	28,293,623	32,913,302	36,438,320	36,428,095	36,428,095	36,428,095
Staffing FTE	164.98	151.76	159.05	173.93	177.40	177.40	177.40