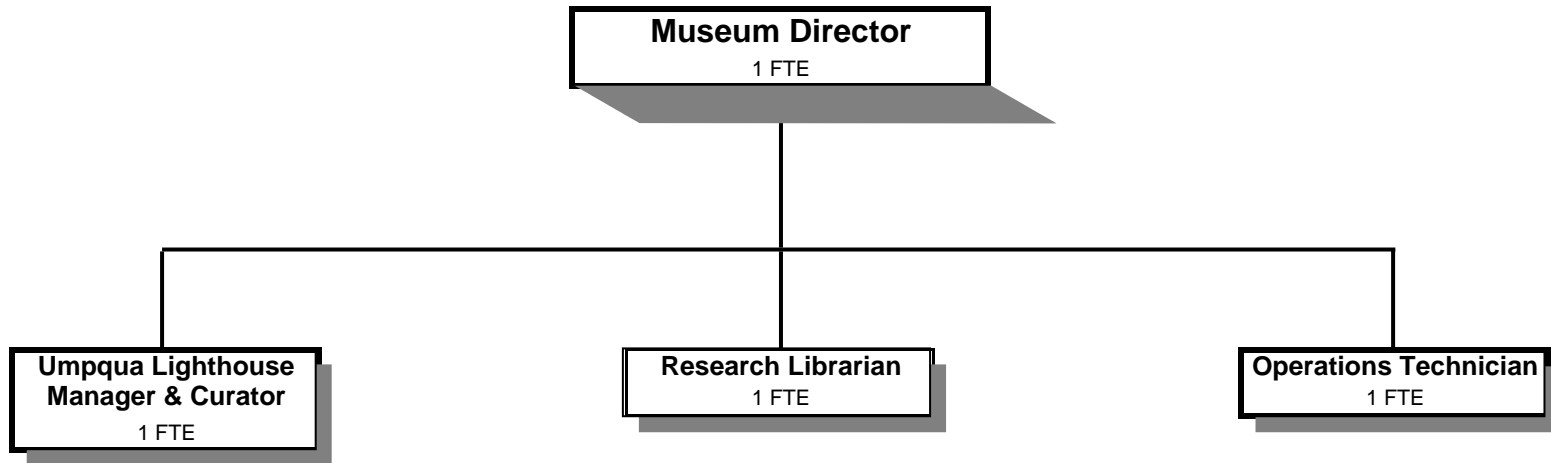


# **MUSEUM**



Douglas County, Oregon  
General Fund  
Museum (6000)

	Actual FY 07-08	Actual FY 08-09	Actual FY 09-10	Revised Budget FY 10-11	Proposed FY 11-12	Approved FY 11-12	Adopted FY 11-12
<b><u>TOTAL DEPARTMENT</u></b>							
<b><u>RESOURCES</u></b>							
Charges, Fees, Sales	86,256	145,741	148,224	193,000	187,000	187,000	187,000
Contributions and Donations	3,493	5,949	14,121	14,589	10,500	10,500	10,500
Intergovernmental Revenue	66,245	55,440	23,104	16,000			
Total	155,994	207,130	185,449	223,589	197,500	197,500	197,500
<b><u>REQUIREMENTS</u></b>							
Personal Services	329,803	347,803	315,393	331,949	288,560	288,560	288,560
Materials & Services	160,441	120,228	139,867	109,385	100,160	100,160	100,160
Capital Outlay	5,800						
Total	496,044	468,031	455,260	441,334	388,720	388,720	388,720
<b>General Resource Contribution Required</b>	<b>340,050</b>	<b>260,901</b>	<b>269,811</b>	<b>217,745</b>	<b>191,220</b>	<b>191,220</b>	<b>191,220</b>
<b>Staffing FTE</b>	<b>5.00</b>	<b>5.00</b>	<b>5.25</b>	<b>5.25</b>	<b>4.00</b>	<b>4.00</b>	<b>4.00</b>
<b><u>MUSEUM GENERAL OPERATIONS</u></b>							
Resources	(105,274)	(107,692)	(86,089)	(94,589)	(62,500)	(62,500)	(62,500)
Requirements:							
Personal Services	300,975	304,260	259,059	271,803	220,951	220,951	220,951
Materials and Services	82,340	65,315	85,431	53,110	39,260	39,260	39,260
Capital Outlay							
General Resource Contribution Required	278,041	261,883	258,401	230,324	197,711	197,711	197,711
<b><u>COASTAL MUSEUM - Begin FY07 (008032,008033)</u></b>							
Resources	(50,720)	(99,438)	(99,360)	(129,000)	(135,000)	(135,000)	(135,000)
Requirements:							
Personal Services	28,828	43,543	56,333	60,146	67,609	67,609	67,609
Materials and Services	78,101	54,913	54,437	56,275	60,900	60,900	60,900
Capital Outlay	5,800						
General Resource Contribution Required	62,009	(982)	11,410	(12,579)	(6,491)	(6,491)	(6,491)
<b>Total General Resource Contribution Required</b>	<b>340,050</b>	<b>260,901</b>	<b>269,811</b>	<b>217,745</b>	<b>191,220</b>	<b>191,220</b>	<b>191,220</b>

Douglas County, Oregon  
General Fund  
Museum

Department Detail

			Actual	Actual	Revised	Proposed	Approved	Adopted
			FY 08-09	FY 09-10	Budget	FY 11-12	FY 11-12	FY 11-12
					FY 10-11			
100-6000-2750-00	Fees and Admissions	General	18,413	19,771	20,000	20,000	20,000	20,000
100-6000-2750-02	Fees and Admissions	Lighthouse Tours	21,722	21,418	35,000	35,000	35,000	35,000
100-6000-2750-30	Fees and Admissions	Memberships	4,805	5,909	15,000	7,500	7,500	7,500
100-6000-2750-35	Fees and Admissions	School Groups	0	336	5,000	1,500	1,500	1,500
100-6000-3390-00	State-Other Assistance	General	55,440	23,104	1,000	0	0	0
100-6000-3395-00	Local Assistance	General	0	0	15,000	0	0	0
100-6000-3820-03	Rents, Leases and Royalties	Land & Buildings	941	2,347	3,000	2,500	2,500	2,500
100-6000-3820-06	Rents, Leases and Royalties	Parks Gift Shop	0	44	0	0	0	0
100-6000-3840-00	Contributions and Donations	General	3,888	3,073	6,500	9,000	9,000	9,000
100-6000-3840-02	Contributions and Donations	Museum Foundation	364	8,246	8,089	1,500	1,500	1,500
100-6000-3840-03	Contributions and Donations	Lighthouse	1,697	2,802	0	0	0	0
100-6000-3870-01	Other Sales	Gift Shop Sales	91,046	93,689	110,000	115,000	115,000	115,000
100-6000-3879-00	Miscellaneous	General	564	61	0	0	0	0
100-6000-3879-01	Miscellaneous	Photographic Services	7,104	3,655	5,000	4,000	4,000	4,000
100-6000-3879-40	Miscellaneous	Friends of the Museum	1,146	994	0	1,500	1,500	1,500
<b>Total Revenue</b>			<b>207,130</b>	<b>185,449</b>	<b>223,589</b>	<b>197,500</b>	<b>197,500</b>	<b>197,500</b>
100-6000-4000-00	Regular Employees	General	193,503	199,311	207,426	161,805	161,805	161,805
100-6000-4030-00	Temporary Employees	General	20,297	92	0	19,624	19,624	19,624
100-6000-4050-00	Overtime	General	146	0	0	0	0	0
100-6000-4500-00	PERS	General	55,014	39,285	44,298	40,510	40,510	40,510
100-6000-4510-00	Social Security	General	16,307	14,991	15,869	13,879	13,879	13,879
100-6000-4520-00	Workers' Compensation	General	2,208	1,486	726	635	635	635
100-6000-4520-01	Workers' Compensation	Workers Comp Claims	0	167	0	0	0	0
100-6000-4530-00	Medical and Dental Insurance	General	58,234	57,459	60,000	48,932	48,932	48,932
100-6000-4540-00	Unemployment	General	2,094	2,602	3,630	3,175	3,175	3,175
<b>Total Personal Services</b>			<b>347,803</b>	<b>315,393</b>	<b>331,949</b>	<b>288,560</b>	<b>288,560</b>	<b>288,560</b>
100-6000-5050-00	Security Services	General	932	887	1,000	1,000	1,000	1,000
100-6000-5099-00	Other Professional Services	General	5,055	0	0	0	0	0
100-6000-6290-00	Software Purchases	General	376	561	500	500	500	500
100-6000-6295-00	Equipment-Noninventory	General	419	254	0	0	0	0
100-6000-6299-00	Other Materials and Supplies	General	3,216	800	250	300	300	300
100-6000-6299-01	Other Materials and Supplies	Museum Exhibits	8,587	9,039	250	500	500	500

Douglas County, Oregon  
General Fund  
Museum

Department Detail

			Actual	Actual	Revised	Proposed	Approved	Adopted
			FY 08-09	FY 09-10	Budget	FY 11-12	FY 11-12	FY 11-12
					FY 10-11			
100-6000-6299-02	Other Materials and Supplies	Store Purchases	44,601	49,014	49,000	52,500	52,500	52,500
100-6000-6299-03	Other Materials and Supplies	Curatorial Supplies	4,120	2,178	1,150	2,000	2,000	2,000
100-6000-6299-04	Other Materials and Supplies	Gift Shop	472	241	500	250	250	250
100-6000-6299-10	Other Materials and Supplies	Educational Supplies	1,684	1,152	150	0	0	0
100-6000-6500-00	Interdept Vehicle Expense	General	2,694	2,256	2,750	2,000	2,000	2,000
100-6000-6510-00	Equip/Vehicle Main & Repair	General	152	140	250	150	150	150
100-6000-6510-10	Equip/Vehicle Main & Repair	Communications System M&R	0	196	0	0	0	0
100-6000-6510-80	Equip/Vehicle Main & Repair	Office & DP Equip	1,237	1,584	2,750	1,750	1,750	1,750
100-6000-6550-00	Building and Grounds Main	General	5,327	11,124	1,250	1,150	1,150	1,150
100-6000-6680-01	Communication	Telephone	5,823	5,014	4,950	4,250	4,250	4,250
100-6000-6680-10	Communication	Internet Service	0	61	0	0	0	0
100-6000-6685-01	Utilities	Electric	5,623	25,740	21,500	19,000	19,000	19,000
100-6000-6685-02	Utilities	Heat	0	6,917	7,500	1,000	1,000	1,000
100-6000-6685-03	Utilities	Water and Sewer	2,761	5,264	5,300	4,550	4,550	4,550
100-6000-6685-04	Utilities	Garbage	0	485	500	500	500	500
100-6000-6685-08	Utilities	Cable TV-Caretakers	645	955	950	975	975	975
100-6000-6720-01	Fire/Liability Insurance	Liability Ins Interdept Charges	3,850	1,500	360	360	360	360
100-6000-6720-02	Fire/Liability Insurance	Liability Insurance	1,231	1,264	1,275	1,275	1,275	1,275
100-6000-7300-00	Advertising/Publicity	General	3,643	2,828	0	0	0	0
100-6000-7400-00	Office Supplies and Expenses	General	2,912	3,350	2,400	2,500	2,500	2,500
100-6000-7410-00	Postage	General	1,003	765	850	550	550	550
100-6000-7550-00	Travel	General	1,227	167	500	150	150	150
100-6000-7560-00	Conventions, Schools, Seminars	General	871	25	0	0	0	0
100-6000-7580-00	Dues and Memberships	General	40	1,060	0	0	0	0
100-6000-7800-00	Legal Publication and Printing	General	5,843	1,700	0	0	0	0
100-6000-7900-00	Miscellaneous	General	3,731	1,409	1,000	200	200	200
100-6000-7900-04	Miscellaneous	Bank Card Fees	2,153	1,937	2,500	2,750	2,750	2,750
<b>Total Materials and Services</b>			<b>120,228</b>	<b>139,867</b>	<b>109,385</b>	<b>100,160</b>	<b>100,160</b>	<b>100,160</b>
<b>Total Expenditures</b>			<b>468,031</b>	<b>455,260</b>	<b>441,334</b>	<b>388,720</b>	<b>388,720</b>	<b>388,720</b>

Douglas County, Oregon  
General Fund  
Museum

PERSONAL SERVICES					
	Actual	Actual	Revised	Budget	
	FTE	FTE	Budget	FY 11-12	
	FY 08-09	FY 09-10	FTE	FTE	Amount
Museum Director	1.00	1.00	1.00	1.00	56,079
Museum Educator	0.50				
Museum Operations Technician		1.00	1.00	1.00	33,234
Museum Research Librarian	1.00	1.00	1.00	1.00	39,443
Umpqua River Lighthouse/Curator		1.00	1.00	1.00	33,049
Museum Curator	1.50	1.00	1.00		
Department Assistant 3	1.00	0.25	0.25		
Total Regular	<u>5.00</u>	<u>5.25</u>	<u>5.25</u>	<u>4.00</u>	<u>161,805</u>
Temporary					19,624
PERS		24.60%, 26.39%			40,510
Social Security		7.65%			13,879
Worker's Compensation		0.35%			635
Unemployment		1.75%			3,175
Medical & Dental Insurance		\$1,019/mo			<u>48,932</u>
Total Personal Services					<u><u>288,560</u></u>