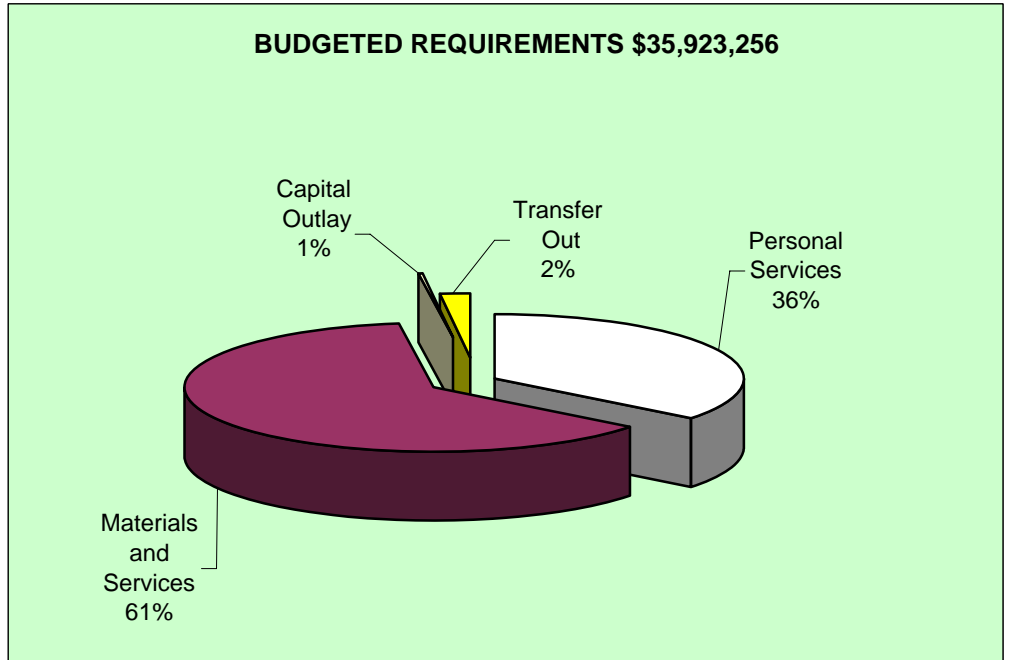
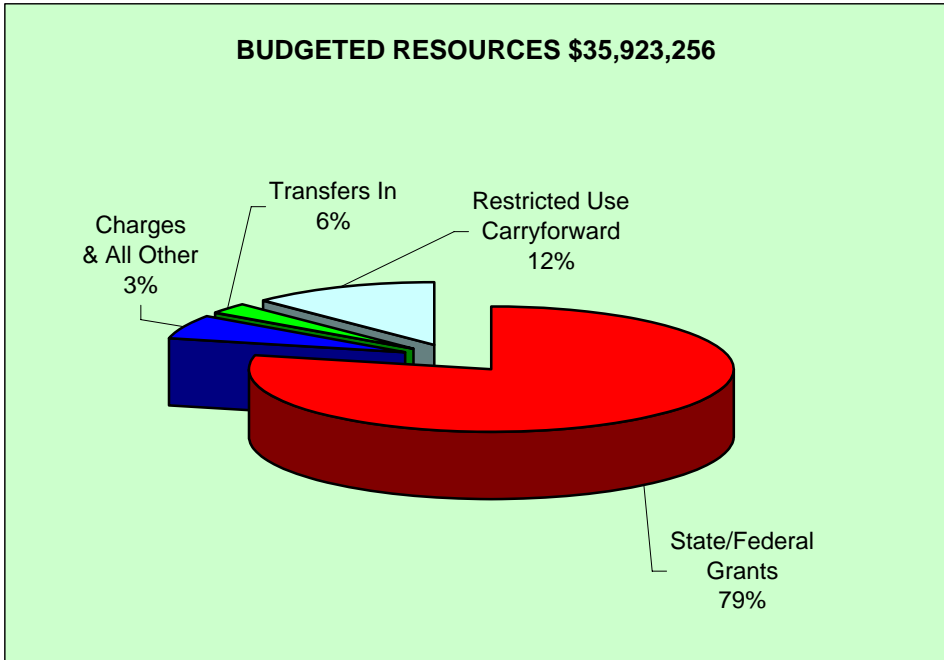
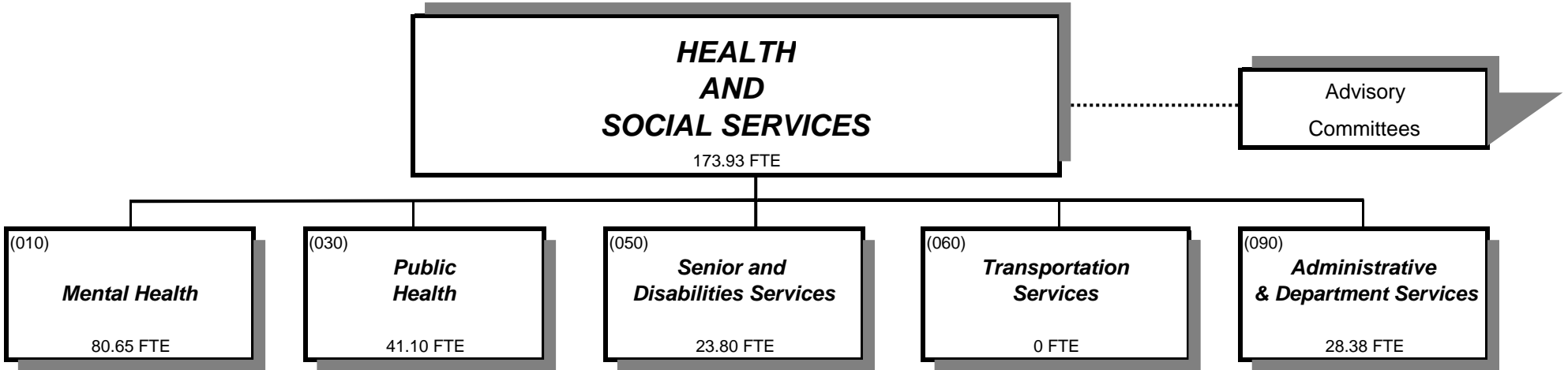


# DEPARTMENT OF HEALTH AND SOCIAL SERVICES



Douglas County, Oregon  
 Health and Social Services Fund (207)  
 Summary

	Actual FY 06-07	Actual FY 07-08	Actual FY 08-09	Revised Budget FY 09-10	Proposed FY 10-11	Approved FY 10-11	Adopted FY 10-11
<b><u>RESOURCES</u></b>							
<b>Beginning Fund Balance</b>							
Use Restricted by Payee	2,722,535	1,228,010	1,733,108	1,935,418	4,475,890	4,475,890	4,475,890
Unrestricted Use	304,608		176,498				
	<u>3,027,143</u>	<u>1,228,010</u>	<u>1,909,606</u>	<u>1,935,418</u>	<u>4,475,890</u>	<u>4,475,890</u>	<u>4,475,890</u>
<b>Revenues and Other Sources:</b>							
Divisional:							
Intergovernmental Revenues	17,876,108	19,868,996	23,048,226	26,636,520	28,281,324	28,281,324	28,281,324
Charges and Other Revenues	1,406,562	1,552,198	1,120,657	1,129,999	963,021	963,021	963,021
Interest	69,670	35,099	20,147	30,325	30,360	30,360	30,360
Transfers In - General Fund	15,000	15,000	85,000	183,040	251,642	251,642	251,642
Transfers In - Public Safety Fund				18,000	18,000	18,000	18,000
Undesignated:							
Transfers In - General Fund	2,099,682	2,261,497	2,109,987	2,114,465	1,903,019	1,903,019	1,903,019
Transfers In - County Forest Management		60,000					
	<u>21,467,022</u>	<u>23,792,790</u>	<u>26,384,017</u>	<u>30,112,349</u>	<u>31,447,366</u>	<u>31,447,366</u>	<u>31,447,366</u>
<b>TOTAL RESOURCES</b>	<b>24,494,165</b>	<b>25,020,800</b>	<b>28,293,623</b>	<b>32,047,767</b>	<b>35,923,256</b>	<b>35,923,256</b>	<b>35,923,256</b>
<b><u>REQUIREMENTS</u></b>							
<b>Expenditures and Other Requirements:</b>							
Personal Services	10,156,973	9,520,554	9,021,553	10,860,610	12,743,622	12,743,622	12,743,622
Materials & Services	12,380,030	12,498,794	14,897,462	19,805,596	22,423,251	22,423,251	22,423,251
Capital Outlay	71,661	434,356	70,181	724,072	58,572	58,572	58,572
Transfers Out - General Fund	657,491	657,490	657,489	657,489	697,811	697,811	697,811
	<u>23,266,155</u>	<u>23,111,194</u>	<u>24,646,685</u>	<u>32,047,767</u>	<u>35,923,256</u>	<u>35,923,256</u>	<u>35,923,256</u>
<b>Ending Fund Balance</b>							
Use Restricted by Payee	1,228,010	1,733,108	3,089,116				
Unrestricted Use		176,498	557,822				
	<u>1,228,010</u>	<u>1,909,606</u>	<u>3,646,938</u>	<u>-</u>	<u>-</u>	<u>-</u>	<u>-</u>
<b>TOTAL REQUIREMENTS</b>	<b>24,494,165</b>	<b>25,020,800</b>	<b>28,293,623</b>	<b>32,047,767</b>	<b>35,923,256</b>	<b>35,923,256</b>	<b>35,923,256</b>
<b>Staffing FTE</b>	<b>183.83</b>	<b>164.98</b>	<b>151.76</b>	<b>159.05</b>	<b>173.93</b>	<b>173.93</b>	<b>173.93</b>