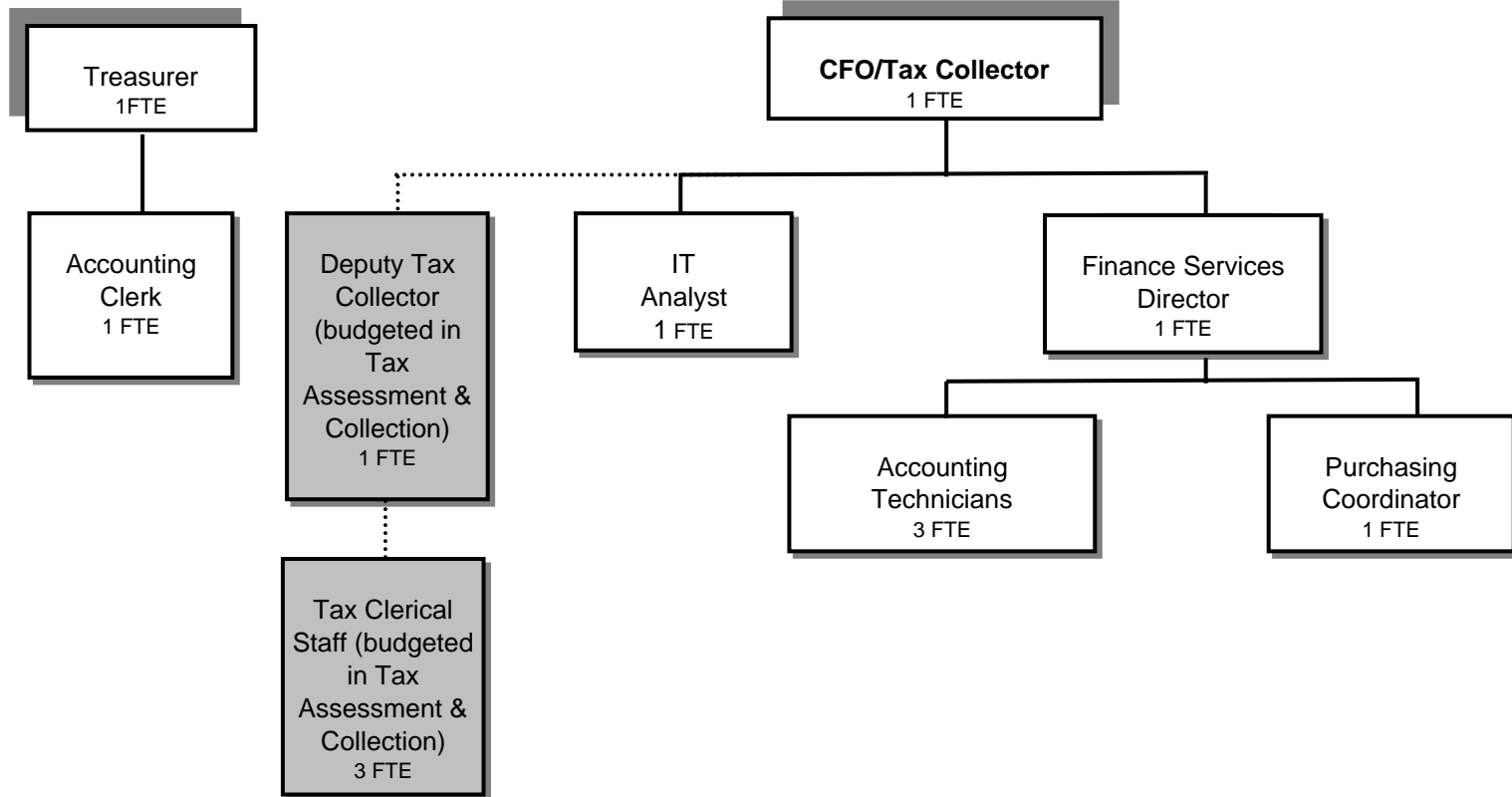


FINANCIAL SERVICES



Douglas County, Oregon
 General Fund
 Financial Services (0600)

	Actual FY 06-07	Actual FY 07-08	Actual FY 08-09	Revised Budget FY 09-10	Proposed FY 10-11	Approved FY 10-11	Adopted FY 10-11
<u>RESOURCES</u>							
Intergovernmental Revenues - Local UTEP	129	181	10,760	71,306	49,390	49,390	49,390
<u>REQUIREMENTS</u>							
Personal Services	908,721	875,616	794,715	892,775	828,948	828,948	828,948
Materials & Services	120,107	114,216	143,814	112,035	122,560	122,560	122,560
Capital Outlay	2,802						
Total	1,031,630	989,832	938,529	1,004,810	951,508	951,508	951,508
<i>General Resource Contribution Required</i>	<i>1,031,501</i>	<i>989,651</i>	<i>927,769</i>	<i>933,504</i>	<i>902,118</i>	<i>902,118</i>	<i>902,118</i>
Staffing FTE	13.12	13.12	11.00	9.80	9.00	9.00	9.00

Douglas County, Oregon
General Fund
Financial Services

Department Summary

			Actual	Actual	Revised	Proposed	Approved	Adopted
			FY 07-08	FY 08-09	Budget	FY 10-11	FY 10-11	FY 10-11
					FY 09-10			
100-0600-3395-01	Local Assistance	UTEP Reimbursement	0	10,609	71,306	49,390	49,390	49,390
100-0600-3879-00	Miscellaneous	General	181	151	0	0	0	0
Total Revenue			181	10,760	71,306	49,390	49,390	49,390
100-0600-4000-00	Regular Employees	General	562,504	497,806	535,018	498,841	498,841	498,841
100-0600-4030-00	Temporary Employees	General	4,366	11,527	65,000	58,700	58,700	58,700
100-0600-4500-00	PERS	General	129,019	123,756	116,955	109,047	109,047	109,047
100-0600-4510-00	Social Security	General	42,042	37,422	45,901	42,652	42,652	42,652
100-0600-4520-00	Workers' Compensation	General	8,503	5,213	4,501	1,951	1,951	1,951
100-0600-4530-00	Medical and Dental Insurance	General	127,028	114,080	117,600	108,000	108,000	108,000
100-0600-4540-00	Unemployment	General	2,154	4,911	7,800	9,757	9,757	9,757
Total Personal Services			875,616	794,715	892,775	828,948	828,948	828,948
100-0600-5010-00	Auditing and Accounting	General	56,640	59,084	62,000	62,000	62,000	62,000
100-0600-5099-00	Other Professional Services	General	0	37,950	0	16,000	16,000	16,000
100-0600-6290-00	Software Purchases	General	1,780	1,932	1,600	1,600	1,600	1,600
100-0600-6295-00	Equipment-Noninventory	General	1,923	187	2,750	2,750	2,750	2,750
100-0600-6299-00	Other Materials and Supplies	General	68	9	0	0	0	0
100-0600-6500-00	Interdept Vehicle Expense	General	1,077	810	0	0	0	0
100-0600-6510-02	Equip/Vehicle Main & Repair	Equipment Service Contracts	7,494	8,461	8,000	5,000	5,000	5,000
100-0600-6510-80	Equip/Vehicle Main & Repair	Office & Data Processing Equip	1,054	1,945	1,250	1,250	1,250	1,250
100-0600-6530-00	Software Maintenance	General	2,150	2,195	2,500	2,500	2,500	2,500
100-0600-6680-01	Communication	Telephone	309	767	725	725	725	725
100-0600-6720-01	Fire/Liability Insurance	Liability Ins Interdept Charges	6,960	4,465	3,975	1,200	1,200	1,200
100-0600-6850-00	License and Permit Fees	General	153	153	0	0	0	0
100-0600-7300-00	Advertising/Publicity	General	0	454	0	0	0	0
100-0600-7350-00	Printing	General	6,427	887	4,700	3,700	3,700	3,700
100-0600-7400-00	Office Supplies and Expenses	General	9,804	7,735	7,800	6,800	6,800	6,800
100-0600-7410-00	Postage	General	12,609	10,510	13,000	13,000	13,000	13,000
100-0600-7500-00	Subscriptions & Periodicals	General	666	309	500	500	500	500
100-0600-7550-00	Travel	General	293	240	300	100	100	100
100-0600-7560-00	Conventions, Schools, Seminars	General	895	0	300	300	300	300
100-0600-7580-00	Dues and Memberships	General	1,330	1,260	1,135	1,135	1,135	1,135

Douglas County, Oregon
 General Fund
 Financial Services

Department Summary

			Actual	Actual	Revised	Proposed	Approved	Adopted
			FY 07-08	FY 08-09	Budget	FY 10-11	FY 10-11	FY 10-11
					FY 09-10			
100-0600-7800-00	Legal Publication and Printing	General	2,189	4,151	1,500	4,000	4,000	4,000
100-0600-7850-00	Pre-employment Testing	General	165	0	0	0	0	0
100-0600-7900-00	Miscellaneous	General	230	310	0	0	0	0
Total Materials and Services			114,216	143,814	112,035	122,560	122,560	122,560
Total Expenditures			989,832	938,529	1,004,810	951,508	951,508	951,508
Expenditures by Department:								
Management and Finance			836,671	786,353	852,828	784,188	784,188	784,188
Treasurer's Office			153,161	152,176	151,982	167,320	167,320	167,320
Total Expenditures			989,832	938,529	1,004,810	951,508	951,508	951,508

Douglas County, Oregon
General Fund
Financial Services

PERSONAL SERVICES					
	Actual	Actual	Revised	Budget	
	FTE	FTE	Budget	FY 10-11	
	FY 07-08	FY 08-09	FTE	FTE	Amount
Treasurer	1.00	1.00	1.00	1.00	61,194
Chief Financial Officer	1.00	1.00	1.00	1.00	90,336
IS Tech Support Analyst 3	1.00	0.80	0.80	1.00	76,829
Auditor	1.00				
Finance Services Director			1.00	1.00	59,030
Purchasing Manager	1.00	1.00	1.00	1.00	53,420
Financial Analyst	1.00	1.00	1.00		
Accounting Technician 2	3.00	3.00	3.00	3.00	125,256
Accounting Clerk 2	1.00	1.00	1.00	1.00	32,776
Accounting Clerk 1	1.00	1.00			
Department Assistant 4	1.00				
Department Assistant 3	0.50	0.50			
Department Assistant 2	0.62	0.70			
Total Regular	<u>13.12</u>	<u>11.00</u>	<u>9.80</u>	<u>9.00</u>	<u>498,841</u>
Temporary					58,700
PERS		21.86%			109,047
Social Security		7.65%			42,652
Worker's Compensation		0.35%			1,951
Unemployment		1.75%			9,757
Medical & Dental Insurance		\$1,000/mo			<u>108,000</u>
Total Personal Services					<u><u>828,948</u></u>