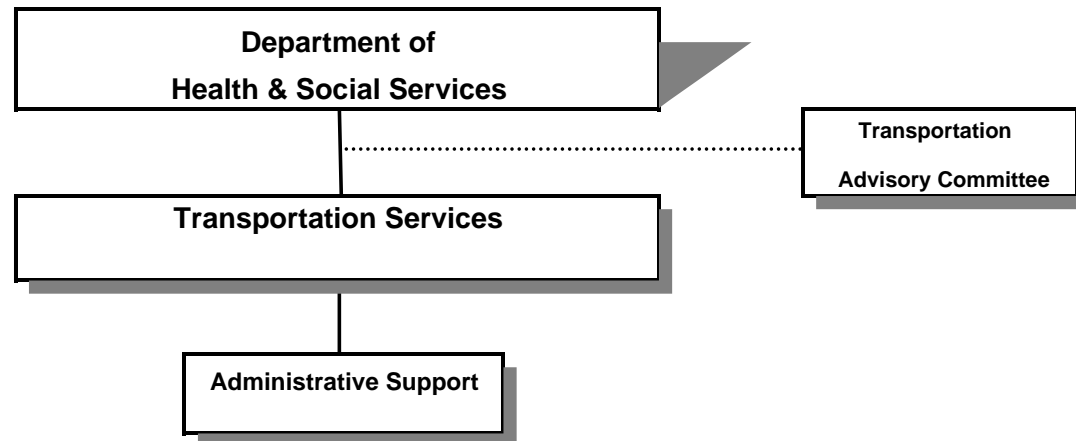


TRANSPORTATION SERVICES DIVISION



SIGNIFICANT CHANGES IN TRANSPORTATION SERVICES PROGRAMS

-Public Transportation was successfully transferred to operator, UCAN, August 1, 2008*
-American Recovery and Reinvestment Act Funds will purchase 6 buses and 2 vans and purchase the preventative maintenance for two years for Public Transit*
-Purchase replacement van for Reedsport Dial-A-Ride FY 09-10 with Special Transportation funds*
-Discretionary Special Transportation funds allocated by county rather than statewide*
-Coordination of STF and Public Transportation funded by Special Transportation Funds*

Douglas County, Oregon
 Health and Social Services Fund
 Transportation Services (4060)

	Actual FY 05-06	Actual FY 06-07	Actual FY 07-08	Revised Budget FY 08-09	Proposed FY 09-10	Approved FY 09-10	Adopted FY 09-10
<u>RESOURCES</u>							
Beginning Balance (Use Restricted)					50,000	50,000	50,000
Intergovernmental Revenues			1,014,795	872,661	1,672,583	1,672,583	1,672,583
Charges and Other Revenues			182,845	75,000			
TOTAL RESOURCES			1,197,640	947,661	1,722,583	1,722,583	1,722,583
<u>REQUIREMENTS</u>							
Personal Services			543,380	275,590	28,385	28,385	28,385
Materials & Services			262,473	772,071	1,025,765	1,025,765	1,025,765
Capital Outlay			333,908		721,000	721,000	721,000
Transfers Out - General Fund			62,897		1,480	1,480	1,480
Add: Expense Reimbursements from Other Divisions			64,999		5,384	5,384	5,384
Total Expenditures			1,267,657	1,047,661	1,782,014	1,782,014	1,782,014
Ending Balance (Use Restricted)			50,000				
TOTAL REQUIREMENTS			1,317,657	1,047,661	1,782,014	1,782,014	1,782,014
Use of General County Resources			120,017	100,000	59,431	59,431	59,431
Staffing FTE			13.13	5.31			

Capital Outlay - 6 Buses & 2 Vans

Douglas County, Oregon
 Health and Social Services Fund
 Transportation Services

Department Detail

			Actual	Actual	Revised	Proposed	Approved	Adopted
			FY 06-07	FY 07-08	Budget	FY 09-10	FY 09-10	FY 09-10
					FY 08-09			
207-4060-2550-00	Transportation Fees	General	0	98,701	52,000	0	0	0
207-4060-2550-01	Transportation Fees	Agency Fares	0	51,912	21,000	0	0	0
207-4060-3250-53	State/Fed-Transportation Dept	Section 5311 Equipment	0	301,274	274,574	0	0	0
207-4060-3250-54	State/Fed-Transportation Dept	Section 5311 PM & Rehab	0	18,983	18,843	152,157	152,157	152,157
207-4060-3250-55	State/Fed-Transportation Dept	Section 5311 Planning	0	21,082	0	0	0	0
207-4060-3250-56	State/Fed-Transportation Dept	Section 5311 Small Cities & Rural	0	275,587	298,376	293,850	293,850	293,850
207-4060-3250-57	State/Fed-Transportation Dept	Section 5310 PM & Rehab	0	12,162	26,022	0	0	0
207-4060-3250-58	State/Fed-Transportation Dept	Section 5311 Passenger Shelters	0	4,139	8,722	0	0	0
207-4060-3250-59	State/Fed-Transportation Dept	Section 5310 Equipment	0	0	0	676,000	676,000	676,000
207-4060-3250-60	State/Fed-Transportation Dept	Section 5310 Discretionary Funds	0	0	0	383,236	383,236	383,236
207-4060-3290-00	State/Fed-Other Assistance	General	0	40,000	0	0	0	0
207-4060-3350-50	State-Transportation Dept	Special Transport Operations	0	176,124	176,124	167,340	167,340	167,340
207-4060-3395-04	Local Assistance	Umpqua Community College	0	15,000	7,500	0	0	0
207-4060-3395-18	Local Assistance	CC Umpqua Indian Foundation	0	25,000	0	0	0	0
207-4060-3650-00	Other Intergovernmental	General	0	125,445	62,500	0	0	0
207-4060-3800-01	Interest	General Investments	0	859	0	0	0	0
207-4060-3870-80	Other Sales	Sale of Inventory	0	3,940	0	0	0	0
207-4060-3879-XX	Miscellaneous	All	0	27,432	2,000	0	0	0
Total Revenue			0	1,197,640	947,661	1,672,583	1,672,583	1,672,583
207-4060-4000-00	Regular Employees	General	0	290,258	131,646	0	0	0
207-4060-4030-00	Temporary Employees	General	0	40,458	29,500	17,900	17,900	17,900
207-4060-4050-00	Overtime	General	0	4,186	0	0	0	0
207-4060-4500-00	PERS	General	0	74,136	34,912	3,913	3,913	3,913
207-4060-4510-00	Social Security	General	0	24,724	12,328	1,369	1,369	1,369
207-4060-4520-00	Workers' Compensation	General	0	5,017	1,611	134	134	134
207-4060-4520-01	Workers' Compensation	Workers Comp Claims	0	586	0	0	0	0
207-4060-4530-00	Medical and Dental Insurance	General	0	102,743	63,660	4,800	4,800	4,800
207-4060-4540-00	Unemployment	General	0	1,272	1,933	269	269	269
Total Personal Services			0	543,380	275,590	28,385	28,385	28,385
207-4060-5040-01	Medical and Hospital Services	Drug & Alcohol Testing	0	1,409	950	0	0	0
207-4060-5300-00	Health & SS Contracts	General	0	0	100,000	0	0	0
207-4060-5335-82	Senior Service Contracts	Special Transportation-Provi	0	36,500	112,562	520,099	520,099	520,099
207-4060-5335-85	Senior Service Contracts	Transportation Providers	0	0	457,958	505,438	505,438	505,438
207-4060-6150-00	Uniforms and Uniform Allowance	General	0	2,022	350	0	0	0
207-4060-6290-00	Software Purchases	General	0	189	0	0	0	0

Douglas County, Oregon
 Health and Social Services Fund
 Transportation Services

Department Detail

			Actual	Actual	Revised	Proposed	Approved	Adopted
			FY 06-07	FY 07-08	Budget	FY 09-10	FY 09-10	FY 09-10
					FY 08-09			
207-4060-6295-00	Equipment-Noninventory	General	0	185	350	0	0	0
207-4060-6299-00	Other Materials and Supplies	General	0	4,865	2,200	0	0	0
207-4060-6450-02	Equipment/Vehicle Rent	Copy Machines	0	481	350	0	0	0
207-4060-6500-00	Interdept Vehicle Expense	General	0	166,000	84,410	0	0	0
207-4060-6510-00	Equip/Vehicle Main & Repair	General	0	5,850	1,250	0	0	0
207-4060-6550-00	Building and Grounds Main	General	0	5,009	4,860	0	0	0
207-4060-6680-01	Communication	Telephone	0	2,479	1,275	228	228	228
207-4060-6720-01	Fire/Liability Insurance	Liability Insurance Interdept Chg	0	9,842	0	0	0	0
207-4060-7300-00	Advertising/Publicity	General	0	22,205	1,000	0	0	0
207-4060-7350-00	Printing	General	0	1,866	2,050	0	0	0
207-4060-7400-00	Office Supplies and Expenses	General	0	540	350	0	0	0
207-4060-7410-00	Postage	General	0	619	300	0	0	0
207-4060-7500-00	Subscriptions & Periodicals	General	0	111	0	0	0	0
207-4060-7550-00	Travel	General	0	0	131	0	0	0
207-4060-7550-80	Travel	Mileage Reimbursement	0	0	225	0	0	0
207-4060-7560-00	Conventions, Schools, Seminars	General	0	763	500	0	0	0
207-4060-7800-00	Legal Publication and Printing	General	0	806	300	0	0	0
207-4060-7820-00	Advisory Committee Expense	General	0	210	400	0	0	0
207-4060-7850-00	Pre-employment Testing	General	0	522	300	0	0	0
Total Materials and Services			0	262,473	772,071	1,025,765	1,025,765	1,025,765
207-4060-8300-00	Vehicles and Heavy Equipment	General	0	333,908	0	721,000	721,000	721,000
Total Capital Outlay			0	333,908	0	721,000	721,000	721,000
207-4060-9500-01	Transfers Out	General Fund	0	62,897	0	1,480	1,480	1,480
207-4060-9899-02	Intrafund Transfers	Mental Health	0	(360)	0	0	0	0
207-4060-9899-04	Intrafund Transfers	Senior Services	0	(1,030)	0	0	0	0
207-4060-9899-12	Intrafund Transfers	Umpqua Transit	0	0	0	3,574	3,574	3,574
207-4060-9899-22	Intrafund Transfers	Accounting	0	23,292	0	701	701	701
207-4060-9899-40	Intrafund Transfers	MIS	0	19,695	0	0	0	0
207-4060-9899-41	Intrafund Transfers	Info Tech	0	0	0	286	286	286
207-4060-9899-50	Intrafund Transfers	Dept. Admin	0	23,402	0	823	823	823
Total Other			0	127,896	0	6,864	6,864	6,864
Total Expenditures			0	1,267,657	1,047,661	1,782,014	1,782,014	1,782,014

Douglas County, Oregon
Health and Social Services Fund
Transportation Services

PERSONAL SERVICES					
	Actual	Actual	Revised	Budget	
	FTE	FTE	Budget	FY 09-10	
	FY 06-07	FY 07-08	FTE	FTE	Amount
Senior Services Coordinator		1.00	0.63		
Transit Bus Drivers		8.13	4.18		
Lead Bus Driver		1.00			
Transit Coordinator		1.00			
Office Manager 2		1.00			
Department Assistant 3		1.00	0.50		
Total Regular	-	13.13	5.31	-	-
Temporary					17,900
PERS		21.86%			3,913
Social Security		7.65%			1,369
Worker's Compensation		0.75%			134
Unemployment		1.50%			269
Medical & Dental Insurance		\$1,000/mo			4,800
Total Personal Services					<u>28,385</u>

Douglas County, Oregon
Health and Social Services Fund
Transportation Programs

SPECIAL TRANSPORTATION

-Staffing: Administrative Support
 -Administer the Special Transportation Funds (STF & STG) provided by the Oregon Department of Transportation
 -Staff the Special Transportation Advisory Committee
 -Coordinate Transportation Plan
 -Collect STF agencies quarterly reports, monitor activity, and submit to ODOT
 -Update of Transportation System Plan
-
-

UMPQUA TRANSIT

-Staffing: Administrative Support
 -Review application and receive 5311 Public Transit Funds from ODOT.
 -Monitor contract compliance and reports to ODOT of operator of services.
 -County contribution to this program is estimated at \$59,431
-
-