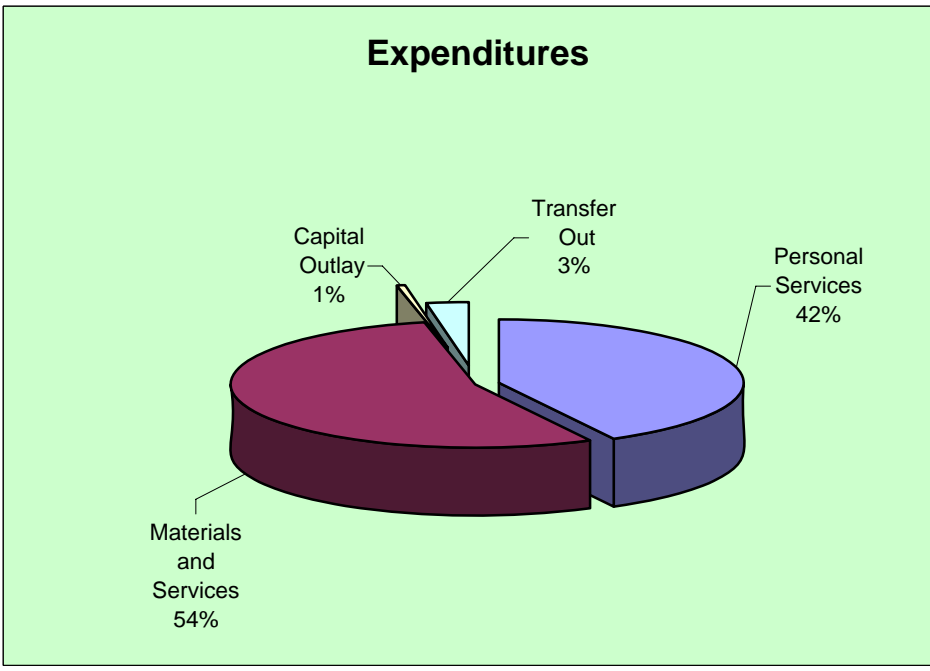
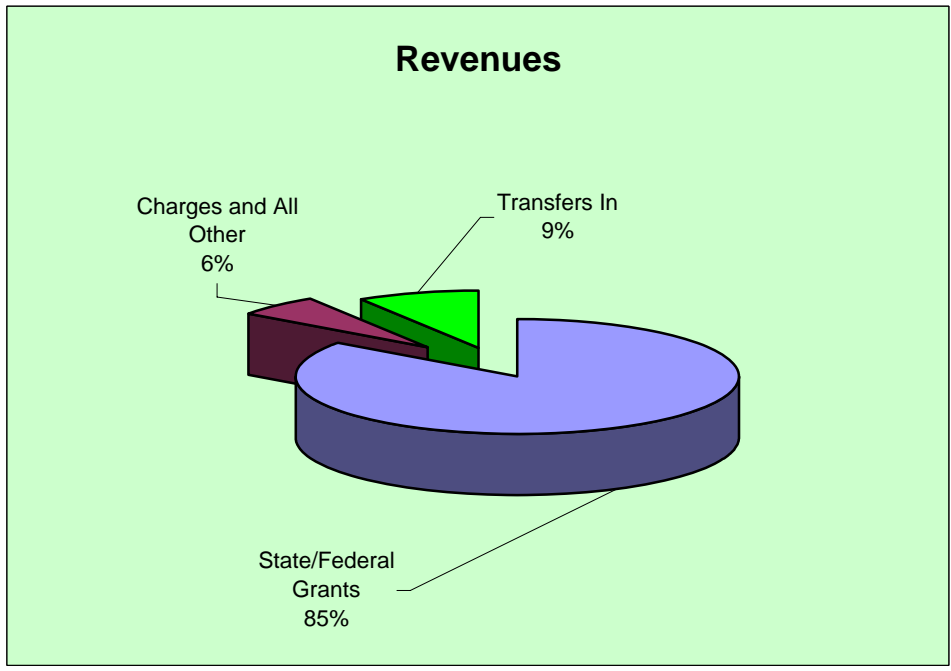
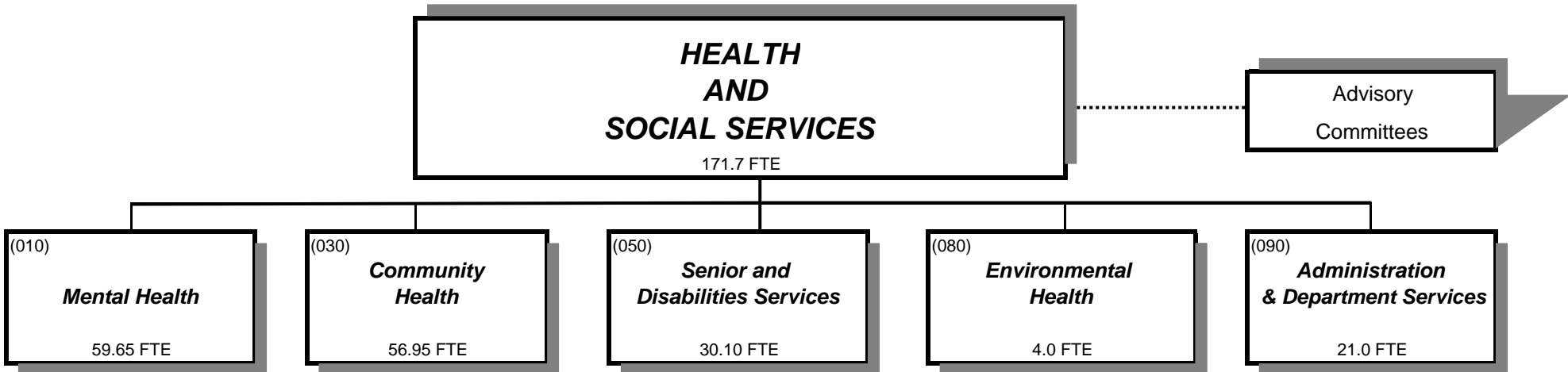


# DEPARTMENT OF HEALTH AND SOCIAL SERVICES



Douglas County, Oregon  
Health and Social Services Fund (207)  
Summary

	Actual				2005-06	2006-07		
	2001-02	2002-03	2003-04	2004-05	Budget	Proposed	Approved	Adopted
<b><u>RESOURCES</u></b>								
<b><i>Beginning Fund Balance</i></b>								
Use Restricted by Payee	3,793,328	3,567,246	3,423,100	3,006,722	2,765,214	2,155,849	2,155,849	2,155,849
Unrestricted Use	511,502	463,562	896,515	1,130,534	1,100,000	492,869	492,869	492,869
	<u>4,304,830</u>	<u>4,030,808</u>	<u>4,319,615</u>	<u>4,137,256</u>	<u>3,865,214</u>	<u>2,648,718</u>	<u>2,648,718</u>	<u>2,648,718</u>
<b><i>Revenues</i></b>								
Intergovernmental Revenues	17,525,661	17,486,072	16,483,647	17,284,228	19,037,042	18,804,927	18,804,927	18,804,927
Charges and Other Revenues	1,302,537	1,222,499	1,056,931	1,037,228	1,071,256	1,356,081	1,356,081	1,356,081
Transfers In - General Fund	2,740,635	2,740,636	2,240,636	1,740,636	1,640,636	1,960,426	1,960,426	1,960,426
Public Safety Fund	47,455	75,729						
	<u>21,616,288</u>	<u>21,524,936</u>	<u>19,781,214</u>	<u>20,062,092</u>	<u>21,748,934</u>	<u>22,121,434</u>	<u>22,121,434</u>	<u>22,121,434</u>
<b><i>Total Resources</i></b>	<b>25,921,118</b>	<b>25,555,744</b>	<b>24,100,829</b>	<b>24,199,348</b>	<b>25,614,148</b>	<b>24,770,152</b>	<b>24,770,152</b>	<b>24,770,152</b>
<b><u>REQUIREMENTS</u></b>								
<b><i>Expenditures</i></b>								
Personal Services	11,182,964	11,107,512	9,796,871	9,449,972	11,260,409	10,152,914	10,152,914	10,152,914
Materials & Services	9,936,558	9,592,926	9,685,037	10,081,609	11,792,557	13,023,616	13,023,616	13,023,616
Capital Outlay	387,615	152,518	98,492	68,889	233,300	139,294	139,294	139,294
Transfers Out - General Fund	383,173	383,173	383,173	383,173	657,491	657,491	657,491	657,491
	<u>21,890,310</u>	<u>21,236,129</u>	<u>19,963,573</u>	<u>19,983,643</u>	<u>23,943,757</u>	<u>23,973,315</u>	<u>23,973,315</u>	<u>23,973,315</u>
<b><i>Ending Fund Balance</i></b>								
Use Restricted by Payee					1,297,547	796,837	796,837	796,837
Unrestricted Use					372,844			
	<u>4,030,808</u>	<u>4,319,615</u>	<u>4,137,256</u>	<u>4,215,705</u>	<u>1,670,391</u>	<u>796,837</u>	<u>796,837</u>	<u>796,837</u>
<b><i>Total Requirements</i></b>	<b>25,921,118</b>	<b>25,555,744</b>	<b>24,100,829</b>	<b>24,199,348</b>	<b>25,614,148</b>	<b>24,770,152</b>	<b>24,770,152</b>	<b>24,770,152</b>
<b>Staffing FTE</b>	<b>230.99</b>	<b>225.45</b>	<b>185.85</b>	<b>182.85</b>	<b>175.10</b>	<b>171.70</b>	<b>171.70</b>	<b>171.70</b>