

701
0.22 AC

2400
0.34 AC

2500
0.43 AC

2200
0.25 AC

2100
0.18 AC

2000
0.19 AC

1900
0.18 AC

3000
0.18 AC

2900
0.23 AC

2800
0.17 AC

2700
0.17 AC

2901
0.50 AC

2902
0.23 AC

3101
0.10 AC

3100
0.0766 AC

CONRAD ST.

FOREST

TOPTON

LOT LINE VACATED INST 79-9871

25' EASEMENT

SEE M 55-27

SEE M 71-36

M 76-77

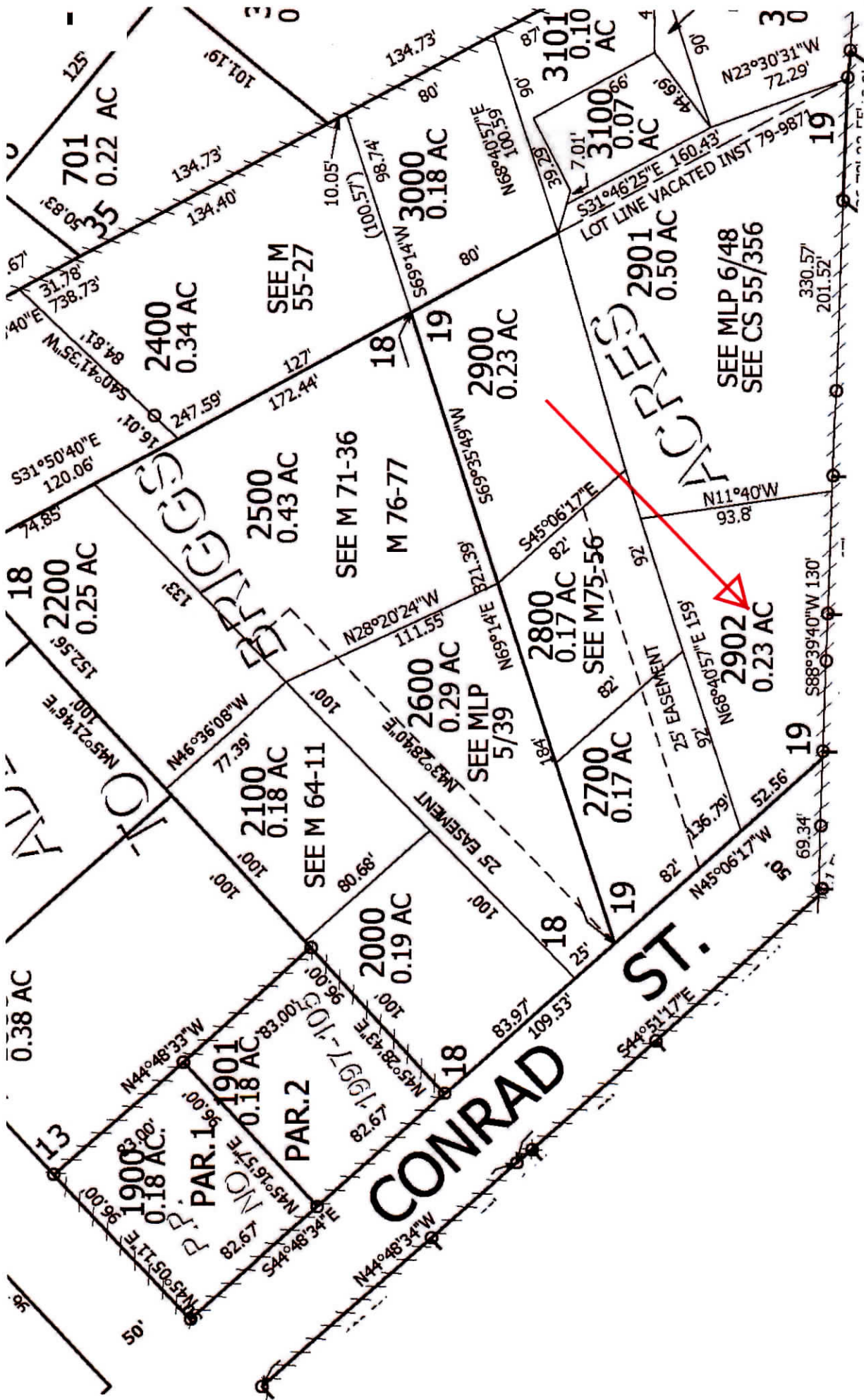
SEE MLP 5/39

SEE M75-56

SEE MLP 6/48
SEE CS 55/356

PAR. 1

PAR. 2



701
0.22 AC

2400
0.34 AC

2500
0.43 AC

2200
0.25 AC

2100
0.18 AC

2000
0.19 AC

1900
0.18 AC

3000
0.18 AC

2900
0.23 AC

2800
0.17 AC

2700
0.17 AC

2901
0.50 AC

2902
0.23 AC

3101
0.10 AC

3100
0.0766 AC

CONRAD ST.

FOREST

TOPTON

LOT LINE VACATED INST 79-9871

25' EASEMENT

SEE M 55-27

SEE M 71-36

M 76-77

SEE MLP 5/39

SEE M75-56

SEE MLP 6/48
SEE CS 55/356

PAR. 1

PAR. 2