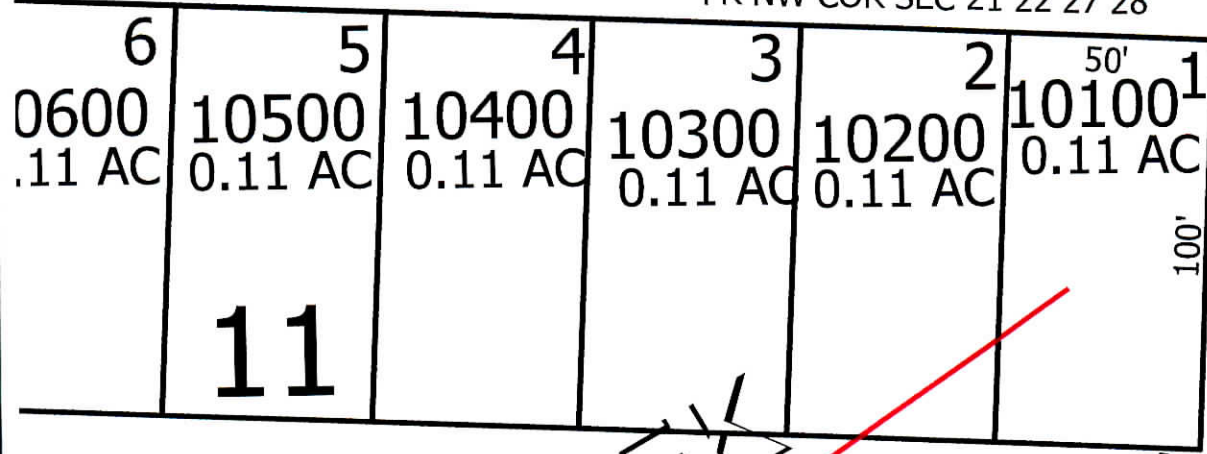
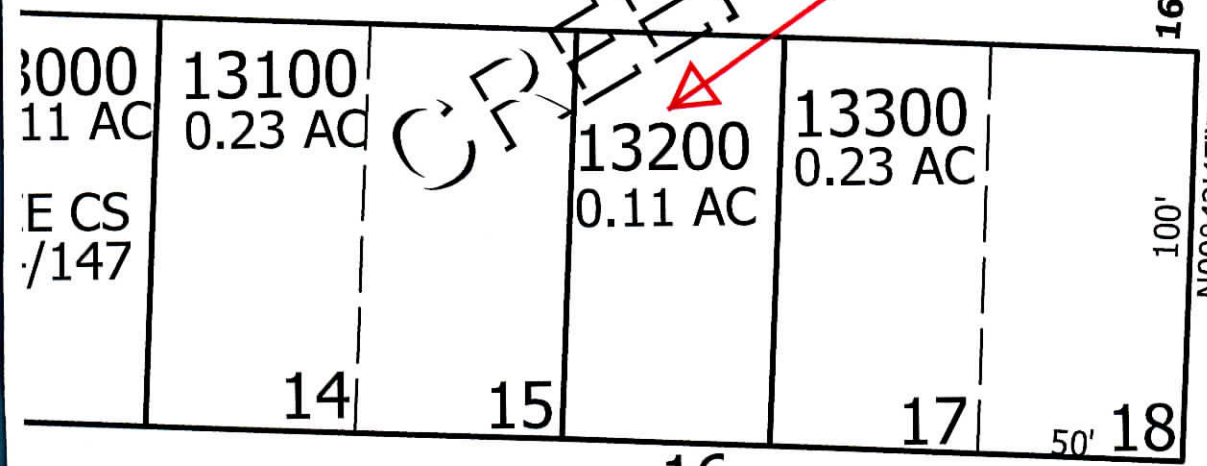


S54°59'54"E 1520.65'
FR NW COR SEC 21 22 27 28



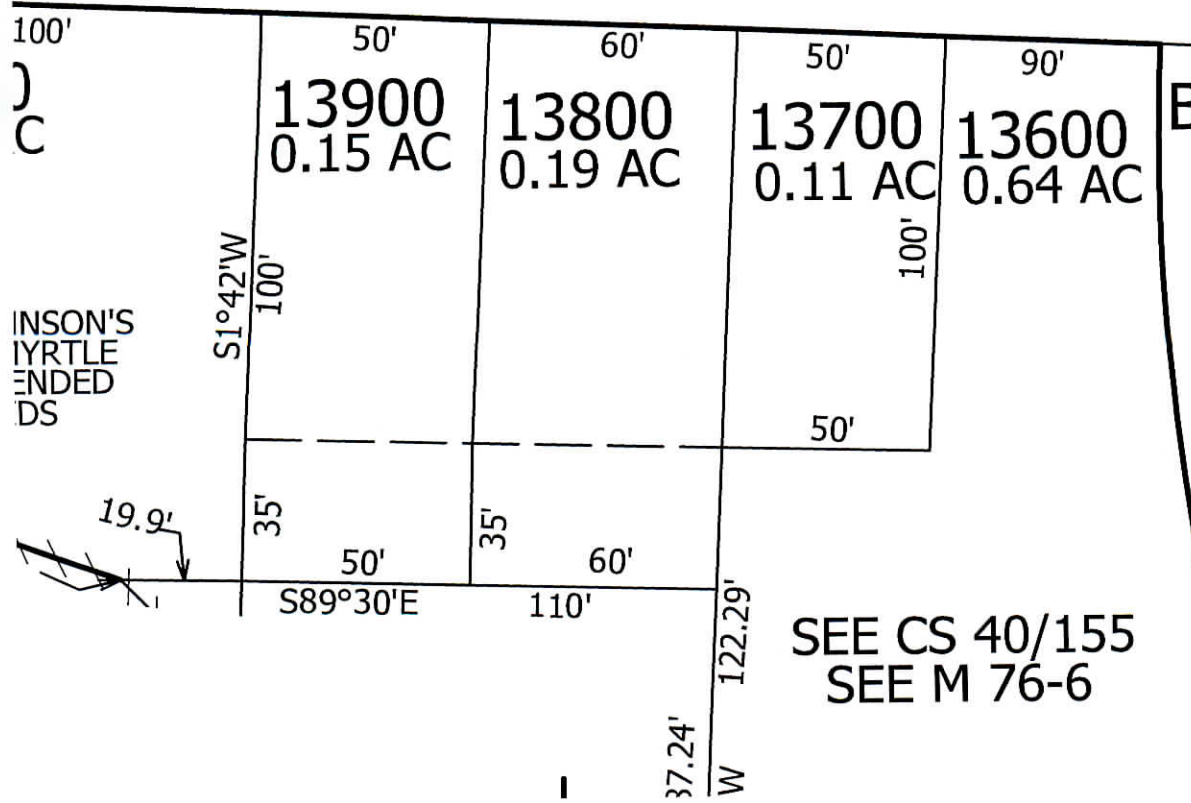
60'
(75' R/W)
SUB V2 P49



N00°42'47"E

16
S54°59'54"E 1520.65'
S02°28'57"W 262.24'
FR NW COR SEC 21 22 27 28

730' N89°30'W



SEE CS 40/155
SEE M 76-6

INSON'S
LYRTLE
ENDED
DS

M81

