



PUBLIC WORKS DEPARTMENT

Administrative Services

1036 SE Douglas, Room 220 • Roseburg, Oregon 97470 • (541) 440-4208

DIVISIONS

Engineering and Construction
1036 SE Douglas, Room 304
Roseburg, Oregon 97470
(541) 440-4481

Natural Resources
1036 SE Douglas, Room 306
Roseburg, Oregon 97470
(541) 440-4255

Operations and Maintenance
433 Rifle Range Road
Roseburg, Oregon 97470
(541) 440-4268

Work Crew
1036 SE Douglas, Room 213
Roseburg, Oregon 97470
(541) 957-2072

ADDENDUM NO. 2

DATE: February 7, 2019

TO: All Bid Document Holders

INVITATION: Hwy 99N: Winchester Bridge to Pleasant Ave.
Douglas County, Oregon
Project No. 10968

BIDS DUE BY: **8:30 A.M. - February 20, 2019**

Addendum No. 2 consists of the following changes:

SCHEDULE OF BID ITEMS

Replace Sheets 1 – 4 with the attached Sheets 1 – 4,

PROJECT PLANS

Replace Sheet C09 with the attached Sheet C09,

Dated the 7th Day of February, 2019.


Garrett McGraw
Contract Administrator

Attachment: Schedule of Bid Items: Sheets 1 - 4
Project Plans: Sheet C09

Contents Read and Considered

Contractor/Company Name

Address

Signature

Print Name and Title

ITEM NO.	SPEC SECTION	ITEM	UNIT	QTY	UNIT PRICE	AMOUNT
<u>Part 00200 - Temporary Features and Appurtenances</u>						
001	00210	Mobilization	LS	1	\$ _____	\$ _____
002	00225	Temporary Protection And Direction Of Traffic	LS	1	\$ _____	\$ _____
003	00225	Temporary Signs	SQFT	1000	\$ _____	\$ _____
004	00225	Temporary Barricades, Type III	EACH	20	\$ _____	\$ _____
005	00225	Temporary Flexible Pavement Markers	EACH	1000	\$ _____	\$ _____
006	00225	Portable Changeable Message Signs	EACH	2	\$ _____	\$ _____
007	00225	Flaggers	HOUR	5000	\$ _____	\$ _____
008	00245	Temporary Water Management Facility At Station 97+50	LS	1	\$ _____	\$ _____
009	00253	Temporary Work Access and Containment	LS	1	\$ _____	\$ _____
010	00280	Erosion Control	LS	1	\$ _____	\$ _____
011	00280	Plastic Sheeting	SQYD	100	\$ _____	\$ _____
012	00280	Matting, Type C	SQYD	280	\$ _____	\$ _____
013	00280	Matting, Type E	SQYD	363	\$ _____	\$ _____
014	00280	Compost Erosion Blanket	SQYD	4812	\$ _____	\$ _____
015	00280	Check Dam, Type 3	EACH	83	\$ _____	\$ _____
016	00280	Sediment Fence	FOOT	245	\$ _____	\$ _____
017	00280	Inlet Protection, Type 3	EACH	39	\$ _____	\$ _____
018	00280	Inlet Protection, Type 4	EACH	8	\$ _____	\$ _____
019	00280	Inlet Protection, Type 10	EACH	59	\$ _____	\$ _____
020	00280	Sediment Barrier, Type 3	FOOT	8494	\$ _____	\$ _____
021	00280	Straw Bales	EACH	10	\$ _____	\$ _____
022	00290	Pollution Control Plan	LS	1	\$ _____	\$ _____
023	00290	Work Containment Plan And System	LS	1	\$ _____	\$ _____
024	00290	Turbidity Monitoring	LS	1	\$ _____	\$ _____
<u>Part 00300 - Roadwork</u>						
025	00305	Construction Survey Work	LS	1	\$ _____	\$ _____
026	00310	Removal Of Structures And Obstructions	LS	1	\$ _____	\$ _____
027	00320	Clearing And Grubbing	LS	1	\$ _____	\$ _____
028	00330	General Excavation	CUYD	8500	\$ _____	\$ _____
029	00330	Ditch Excavation	CUYD	35	\$ _____	\$ _____
030	00331	24 Inch Subgrade Stabilization	SQYD	6000	\$ _____	\$ _____
031	00350	Riprap Geotextile, Type 1	SQYD	120	\$ _____	\$ _____
032	00350	Subgrade Geotextile	SQYD	12000	\$ _____	\$ _____
033	00390	Loose Riprap, Class 50	CUYD	500	\$ _____	\$ _____
<u>Part 00400 - Drainage and Sewers</u>						
034	00415	Mainline Video Inspection	FOOT	4720	\$ _____	\$ _____
035	00430	4 Inch Drain Pipe	FOOT	430	\$ _____	\$ _____
036	00445	8 Inch HDPE Sanitary Sewer Force Main Pipe	FOOT	8950	\$ _____	\$ _____
037	00445	14 Inch HDPE Sanitary Sewer Force Main Pipe	FOOT	9000	\$ _____	\$ _____
038	00445	8 Inch DI Sanitary Sewer Force Main Pipe	FOOT	150	\$ _____	\$ _____
039	00445	14 Inch DI Sanitary Sewer Force Main Pipe	FOOT	265	\$ _____	\$ _____
040	00445	8 Inch DI Sanitary Sewer Force Main Pipe, Across Bridge	FOOT	130	\$ _____	\$ _____
041	00445	14 Inch DI Sanitary Sewer Force Main Pipe, Across Bridge	FOOT	150	\$ _____	\$ _____
042	00445	18 Inch Sanitary Sewer Pipe, 10 Ft Depth	FOOT	125	\$ _____	\$ _____
043	00445	18 Inch Sanitary Sewer Pipe, 20 Ft Depth	FOOT	150	\$ _____	\$ _____

044	00445	Combination Air Release / Air Vacuum Valve	EACH	4	\$	\$
045	00445	Combination Air Release / Air Vacuum Valve Assembly	EACH	2	\$	\$
046	00445	8 Inch Storm Sewer Pipe, 5 Ft Depth	FOOT	25	\$	\$
047	00445	12 Inch Storm Sewer Pipe, 5 Ft Depth	FOOT	1450	\$	\$
048	00445	18 Inch Storm Sewer Pipe, 5 Ft Depth	FOOT	775	\$	\$
049	00445	18 Inch Storm Sewer Pipe, 10 Ft Depth	FOOT	2000	\$	\$
050	00445	24 Inch Storm Sewer Pipe, 10 Ft Depth	FOOT	80	\$	\$
051	00445	36 Inch Sanitary Sewer Pipe, 10 Ft Depth	FOOT	85	\$	\$
052	00445	42 Inch Storm Sewer Pipe, 10 Ft Depth	FOOT	300	\$	\$
053	00445	Pipe Tees, 18 Inch	EACH	1	\$	\$
054	00445	Pipe Tees, 24 Inch	EACH	1	\$	\$
055	00445	12 Inch Force Main Connection to 12 Inch Existing Force Main	LS	1	\$	\$
056	00447	Force Main Manifold Vault Assembly	LS	1	\$	\$
057	00448	14 Inch Flow Meter Valve Vault	LS	1	\$	\$
058	00470	Concrete Sanitary Sewer Manholes, Large Precast 60 Inch	EACH	3	\$	\$
059	00470	Precast Polymer Concrete Manhole, 48 Inch	EACH	1	\$	\$
060	00470	Precast Polymer Concrete Manhole, 60 Inch	EACH	1	\$	\$
061	00470	Concrete Storm Sewer Manholes	EACH	7	\$	\$
062	00470	Concrete Storm Sewer Manholes, Shallow	EACH	1	\$	\$
063	00470	Concrete Storm Sewer Manholes, Large Precast 60 Inch	EACH	1	\$	\$
064	00470	Concrete Storm Sewer Manholes, Large Precast 72 Inch	EACH	6	\$	\$
065	00470	Concrete Storm Sewer Manholes, Large Precast 84 Inch	EACH	2	\$	\$
066	00470	Concrete Manholes, Storm Sewer, Flow Control	EACH	1	\$	\$
067	00470	Concrete Manholes, Storm Sewer, Split Flow Weir	EACH	2	\$	\$
068	00470	Concrete Inlets, Type CG-2	EACH	21	\$	\$
069	00470	Concrete Inlets, Type CG-3	EACH	23	\$	\$
070	00470	Concrete Inlets, Type D	EACH	4	\$	\$
071	00490	Adjusting Boxes	EACH	11	\$	\$
072	00490	Filling Abandoned Structures	EACH	2	\$	\$
073	00490	Minor Adjustment Of Manholes	EACH	5	\$	\$
074	00490	Major Adjustment Of Manholes	EACH	2	\$	\$
075	00490	Extra for Manholes Over Existing Sewers	EACH	8	\$	\$
076	00495	Trench Resurfacing	SQYD	7150	\$	\$
<u>Part 00500 - Bridge No. 23254</u>						
077	00501	Bridge Removal Work	LS	1	\$	\$
078	00510	Structure Excavation	LS	1	\$	\$
079	00510	Granular Wall Backfill	LS	1	\$	\$
080	00520	Furnish Pile Driving Equipment	LS	1	\$	\$
081	00520	Furnish PP 16 X 0.5 Steel Piles	FOOT	368	\$	\$
082	00520	Drive PP 16 X 0.5 Steel Piles	EACH	16	\$	\$
083	00520	Reinforced Pile Tips	EACH	16	\$	\$
084	00530	Reinforcement	LS	1	\$	\$
085	00540	General Structural Concrete, Class 3300	LS	1	\$	\$
086	00545	Reinforced Concrete Bridge End Panels	SQYD	224	\$	\$
087	00550	18 Inch Precast Prestressed Slabs	FOOT	504	\$	\$
088	00560	Structural Steel Utility Brackets	LS	1	\$	\$
089	00587	Combination Bridge Rail	LS	1	\$	\$
<u>Part 00500 - Bridge No. 23253</u>						
090	00501	Bridge Removal Work	LS	1	\$	\$
091	00510	Structure Excavation	LS	1	\$	\$
092	00510	Granular Wall Backfill	LS	1	\$	\$
093	00512	Furnish Drilling Equipment	LS	1	\$	\$
094	00520	Furnish HP 14 X 117 Steel Piles	FOOT	350	\$	\$
095	00521	Cast In Place Piles	EACH	14	\$	\$

096	00530	Reinforcement	LS	1	\$	\$
097	00540	General Structural Concrete, Class 3300	LS	1	\$	\$
098	00545	Reinforced Concrete Bridge End Panels	SQYD	279	\$	\$
099	00550	18 Inch Precast Prestressed Slabs	FOOT	628	\$	\$
100	00560	Structural Steel Utility Brackets	LS	1	\$	\$
101	00587	Combination Bridge Rail	LS	1	\$	\$
		<u>Part 00500 - Wall "W1"</u>				
102	B596	Retaining Wall, Prefabricated Modular Gravity	LS	1	\$	\$
		<u>Part 00500 - Wall "W2"</u>				
103	B596	Retaining Wall, Prefabricated Modular Gravity	LS	1	\$	\$
		<u>Part 00600 - Bases</u>				
104	00620	Cold Plane Pavement Removal, 0 - 2 Inches Deep	SQYD	9000	\$	\$
105	00641	Aggregate Base	TON	12500	\$	\$
		<u>Part 00700 - Wearing Surfaces</u>				
106	00745	Level 3, 1/2 Inch ACP	TON	7400	\$	\$
107	00745	Level 3, 1/2 Inch ACP In Leveling	TON	610	\$	\$
108	00749	Extra For Asphalt Approaches	EACH	39	\$	\$
109	00759	Concrete Curbs, Curb And Gutter	FOOT	10250	\$	\$
110	00759	Concrete Driveways	SQFT	9300	\$	\$
111	00759	Concrete Walks	SQFT	29000	\$	\$
112	00759	Monolithic Concrete Walk With Wall	FOOT	35	\$	\$
113	00759	Extra For Curb Ramps	EACH	26	\$	\$
114	00759	Concrete Bus Shelter Pads	EACH	1	\$	\$
		<u>Part 00800 - Permanent Traffic Safety and Guidance Devices</u>				
115	00810	31 Inch Guardrail, Type 2A	FOOT	75	\$	\$
116	00810	31 Inch Guardrail, Type 3	FOOT	38	\$	\$
117	00810	Guardrail Transition	EACH	3	\$	\$
118	00810	Guardrail Terminals, Non-Flared, Test Level 2	EACH	1	\$	\$
119	00810	Guardrail Terminals, Non-Flared, Test Level 3	EACH	2	\$	\$
120	00830	Impact Attenuator, Type C	EACH	1	\$	\$
121	00830	Impact Attenuator, Type E	EACH	4	\$	\$
122	00860	Longitudinal Pavement Markings - Paint	FOOT	23000	\$	\$
123	00867	Pavement Legend, Type B: Arrows	EACH	4	\$	\$
124	00867	Pavement Legend, Type B-Hs: Bicycle Lane Stencil	EACH	11	\$	\$
125	00867	Pavement Bar, Type B-Hs	SQFT	350	\$	\$
		<u>Part 00900 - Permanent traffic Control and Illumination Systems</u>			\$	\$
126	00905	Remove And Reinstall Existing Signs	LS	1	\$	\$
127	00930	Perforated Steel Square Tube Anchor Sign Supports	LS	1	\$	\$
128	00940	Signs, Standard Sheeting, Sheet Aluminum	SQFT	35	\$	\$
129	00990	Flashing Beacon Installation, Pleasant Ave	LS	1	\$	\$
		<u>Part 01000 - Right of way Development and Control</u>				
130	01011	Biodetention Basin, 99-A	LS	1	\$	\$
131	01011	Biodetention Basin, Strauss	LS	1	\$	\$
132	01012	Water Quality Swale, 99-A	LS	1	\$	\$
133	01013	Water Quality Structure, 48 Inch Storm Filter Manhole	LS	1	\$	\$
134	01013	Water Quality Structure, 72 Inch Storm Filter Manhole	LS	1	\$	\$
135	01013	Water Wuality Structure, 96 Inch Storm Filter Manhole	LS	1	\$	\$
136	01013	Water quality Structure, 8' X 11' Storm Filter Peak Diversion Vault	LS	1	\$	\$
137	01013	Water Quality Structure, Contech CDS Model Number CDS2015-4C	LS	1	\$	\$
138	01030	Permanent Seeding, Mix No. 1	ACRE	0.8	\$	\$
139	01030	Permanent Seeding, Mix No. 2	ACRE	0.07	\$	\$
140	01040	Topsoil	CUYD	50	\$	\$
141	01040	Plant Cuttings, Less Than 1 Inch	EACH	416	\$	\$
142	01050	Type CL-4 Chain Link Fence	FOOT	280	\$	\$

143	01050	Type CL-6 Chain Link Fence	FOOT	430	\$ _____	\$ _____
144	01050	28 Foot X 96 Inch Double Gates	EACH	2	\$ _____	\$ _____
145	01070	Multiple Mailbox Supports	EACH	4	\$ _____	\$ _____
146	01091	Streambed Enhancement	LS	1	\$ _____	\$ _____
147	01095	Remove and Relocate Bus Shelter	EACH	1	\$ _____	\$ _____

TOTAL BID: _____

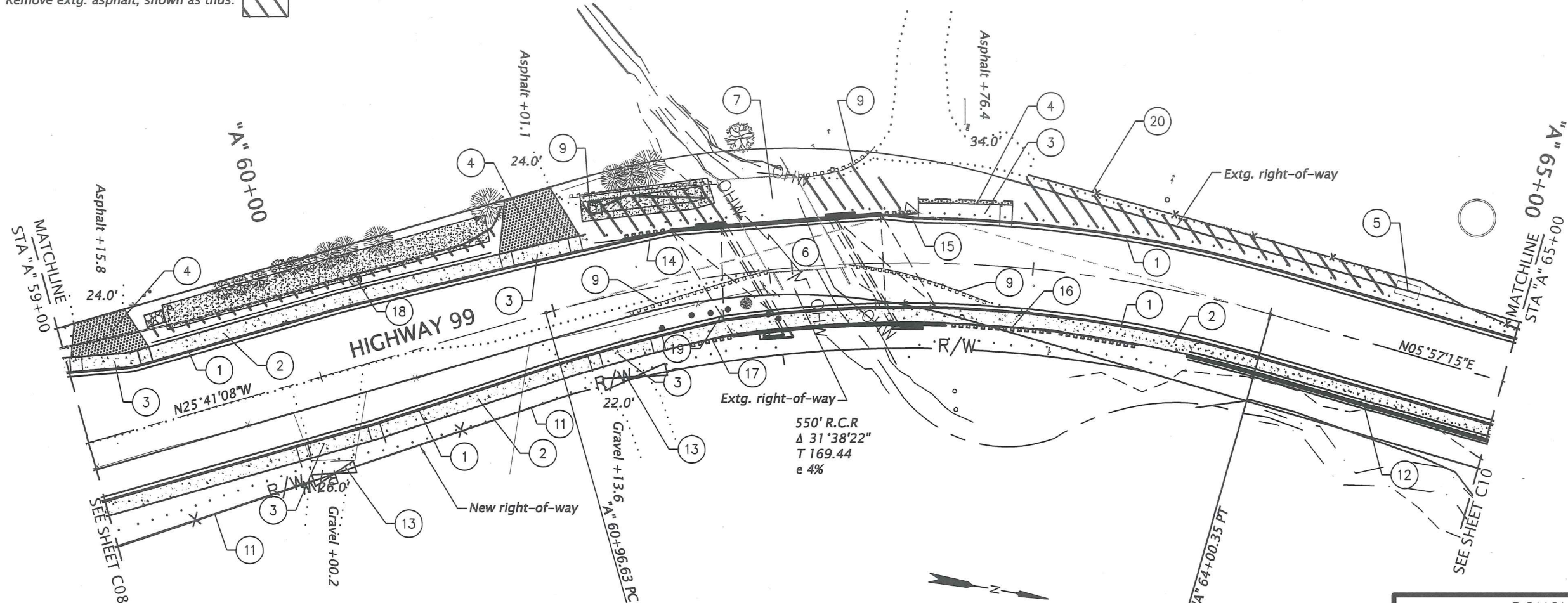
FOR DOUGLAS COUNTY USE ONLY	ADD <u> </u> % FOR NON-RESIDENT BIDDER _____
	TOTAL BID _____

The Bidder acknowledges receipt of the following Addenda: (insert addenda numbers)

No.____ No.____ No.____ No.____ No.____ No.____ No.____ No.____

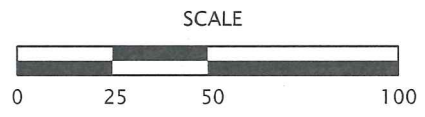
Sec. 36, T. 26S., R 6W., W.M.

- 1 Const. curb and gutter
- 2 Const. sidewalk
- 3 Const. P.C. conc. dwy., option (N) - 5
- 4 Const. asph. conc. driveway conn. - 5
2 1/2" thick HMAC over minimum of 12" base rock
maximum grade at 15%
- 5 Remove extg. bus stop facility and relocate
- 6 Structure No. 23224
Const. structure - 45'
Rdwy. 42' width with 6.5' walk, Rt.
and reinf. panel at bridge ends
(For drgs. no., see sht. A02)
- 7 Remove extg. Br. No. 00438
- 8 Remove extg. asphalt, shown as thus:
- 9 Remove extg. guardrail
- 10 Remove extg. fence
- 11 See sht. C08, note 11.
Const. type CL-6 fence
- 12 Sta. "A" 63+70.2 to Sta. "A" 65+02.0, Rt.
Const. retaining wall
Const. type CL-4 fence - 128'
(For details, see sht. GB01)
- 13 Inst. 28' double gate - 2
(See drg. no. RD815 and RD820)
- 14 Sta. "A" 61+34 to Sta. "A" 61+54
Const. impact attenuator, Type E
Permanent Narrow System
TL-3
Redirective, Non-gating, Maximum length 30'
- 15 Sta. "A" 62+39 to Sta. "A" 62+59
Const. impact attenuator, Type C
Permanent Narrow System
TL-2
Redirective, Non-gating, Maximum length 15'
- 16 Sta. "A" 62+65 to Sta. "A" 63+45
Const. 31" guardrail (Type 2A) - 12.5'
Const. 31" guardrail (Type 3) - 12.5'
Const. guardrail transition to bridge rail
Const. guardrail terminal, non-flared
Test Level 3
(See drg. nos. RD405, RD410, RD420, RD480, RD482 & BR203)
- 17 Sta. "A" 61+52 to Sta. "A" 61+72
Const. impact attenuator, Type E
Permanent Narrow System
TL-3
Redirective, Non-gating Maximum length 30'
- 18 Major adjust sanitary sewer manhole
- 19 Remove extg. private sign and return to
property owner.
- 20 No work area.
Install orange plastic mesh fence - 725'



Legend

- Concrete sidewalk
- Catchline - fill
- Catchline - cut



EXPIRES: 12/31/2018

DOUGLAS COUNTY PUBLIC WORKS DEPARTMENT	
	civil structural surveying architecture planning i.e. Engineering, inc. 809 SE Pine St Roseburg, OR ieengineering.com
OLD HIGHWAY 99N: WINCHESTER BRIDGE TO PLEASANT AVE.	
OLD HIGHWAY 99 NORTH DOUGLAS COUNTY	
Designer: Erik Ranger	Reviewer: Terry Wheeler
Drafter: Andrew Vasquez	Checker: Paul Tappana
GENERAL CONSTRUCTION & ALIGNMENT	
SHEET NO. C09	